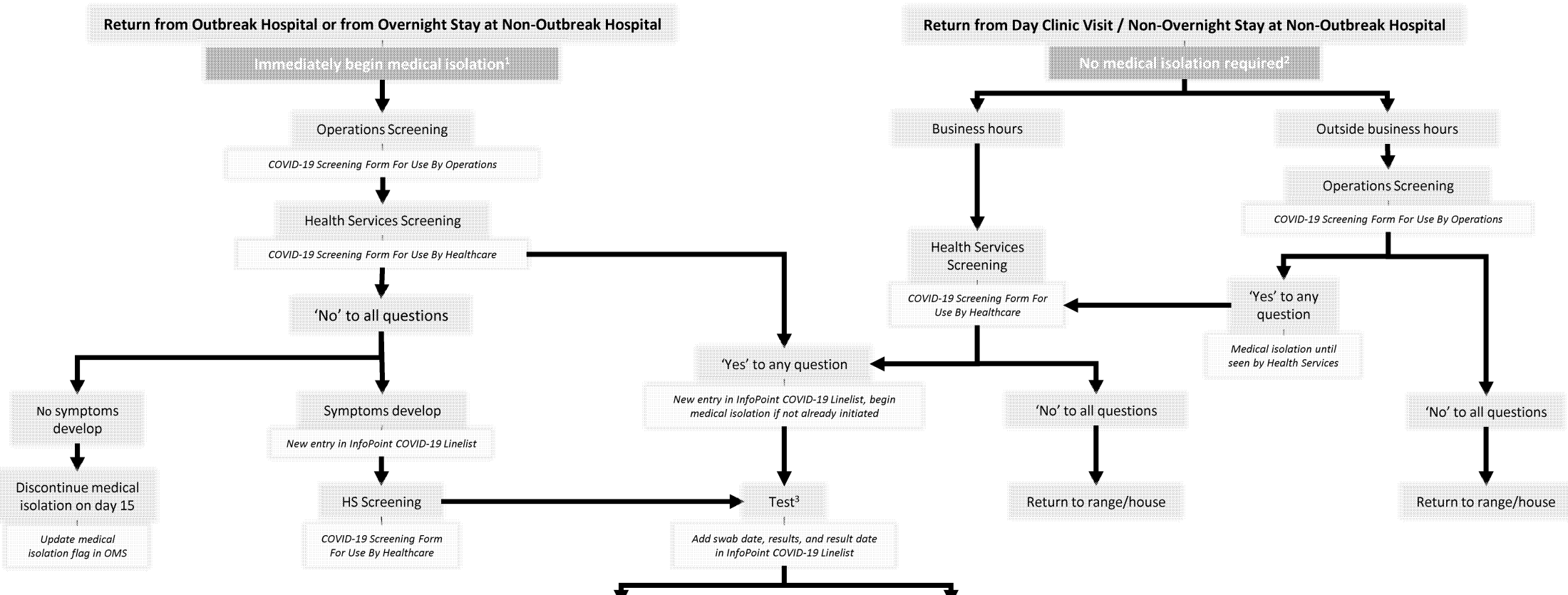


Patient Journey: COVID-19 Return from Hospitalization
 June 22, 2020



Notes
 Staff should engage with inmates to explain the rationale for medical isolation and provide information about the associated protocols. Inmates should be educated on the importance of other infection prevention and control measures, such as hand hygiene, wearing a mask, and maintaining a distance of 2m from others. If concerns arise about inmates following any of the recommended measures noted in this algorithm, institutional management should discuss to determine appropriate response.

COVID-19 Positive Test
 In addition to general medical isolation protocol:
 - Twice daily medical isolation wellness assessments (documented in OHIS-OMS measurements) and treatment as required.
 - Update InfoPoint Linelist as necessary (for example, addition of new symptoms or date of recovery).
 - Every effort should be made to medically isolate COVID-19 positive inmates in a separate space.
 - Discontinue medical isolation when medically cleared, no earlier than 10 days after onset of symptoms with at least 2 days symptom free (update medical isolation flag in OMS).
 - Begin inmate contact tracing.
 - Notify local public health of positive test result.

COVID-19 Negative Test
 In addition to general medical isolation protocol:
 - Twice daily medical isolation wellness assessments (documented in OHIS-OMS measurements) and treatment as required.
 - Update InfoPoint Linelist as necessary (for example, addition of new symptoms or date of recovery).
 - Discontinue medical isolation when medically cleared, no earlier than 10 days after onset of symptoms with at least 2 days symptom free (update medical isolation flag in OMS).

- All medical isolation to include:
 - Inmates to wear mask and maintain distance of 2 metres from others when out of cell.
 - Inmates to clean/disinfect all things they touch when outside cell (phone, showers, tables, etc.)
 - Inmates to wash hands prior to leaving cell and upon returning.
 - Daily wellness assessments documented in OHIS-OMS measurements.
 - Staff to follow PPE Guidance.
 - Update medical isolation flag in OMS .
- Inmate can return to their range/house, but should be reminded to wear their mask until they can be screened by Health Services. They should also practice physical distancing and frequent hand hygiene.
- If hospital admission was related to a COVID-19 diagnosis, there is no requirement to re-test. Treat this individual as COVID-19 Positive.