

LOOKING AFTER CHILDREN
In Ontario:
Good Parenting, Good Outcomes

ONTARIO PROVINCIAL REPORT
(YEAR EIGHT)
REVISED

Prepared by:
Meagan Miller, OnLAC Research Coordinator
&
Robert Flynn, OnLAC Principal Investigator
Centre for Research on Educational and Community Services,
University of Ottawa

November 8, 2010



The collaboration and financial support of the Ontario Ministry of Children and Youth Services and the Ontario Association of Children's Aid Societies are gratefully acknowledged.

Preface

This report is designed for use by child welfare organizations as a performance measurement system. The AAR outcome data available in this report should assist child welfare organizations in the development of an internal evaluation program. The AAR findings are intended to help supervisors, program managers, executive directors and board members within child welfare organizations monitor children's outcomes on a regular basis (quarterly or annually) by comparing children's and youths' developmental progress with intended goals. A second intended use of the AAR is to inform decision-makers as to possible means of improving the quality and relevance of services on an ongoing basis.

***Note:** The AAR findings presented in this report must be reviewed and interpreted carefully by child welfare organizations before new policies and services are implemented.*

This report is also designed to provide policy-makers with accurate, up-to-date knowledge of system-wide outcomes thereby fulfilling an accountability function and a guiding function in identifying policies and practices that promote continuous improvements in child welfare policies and practices.

The acronym 'CAS' appearing in the report represents the data for the specific child welfare organization for which the report was prepared. 'ON' represents the Ontario sample.

A double hyphen (- -) in this report indicates that there was no data collected on a specific variable for a specific group. Clarification is noted, where possible. Percentages were rounded.

Individual agency reports were generated for datasets with 20 or more young people.

Background Information

The Background Information section of this report provides basic socio-demographic information on the young people in care who completed a Year Eight Assessment and Action Record (AAR), their caregivers, and their child welfare workers.

Who are the young people living in care?

Table 1.1: Gender and age of young people who completed a Year Eight AAR, and language of the AAR conversation.

Age Group Sample Size		CAS				ON			
		0-4 N =	5-9 N =	10-15 N =	16-21 N =	0-4 N = 892	5-9 N = 1143	10-15 N = 3228	16-21 N = 1636
Gender	Male					57%	57%	56%	51%
	Female					43%	43%	45%	49%
Age	Mean					2.1	7.3	12.9	16.7
	Median					2.0	7.0	13.0	17.0
Language	English					99%	99%	97%	97%
	French					1%	1%	2%	3%
	First Nations					0%	0%	0%	0.1%
	Other					0.2%	0%	0.2%	0.1%

Table 1.2: Percentage of young people who completed a Year Eight AAR by legal status.

Age Group		CAS				ON			
		0-4	5-9	10-15	16-21	0-4	5-9	10-15	16-21
Legal status	Crown Ward, with access					5%	40%	69%	73%
	Crown Ward, no access					29%	24%	15%	6%
	Society Ward					30%	15%	9%	6%
	Temporary care agreement					4%	3%	2%	0.4%
	Interim care and custody					24%	14%	5%	1.3%
	Extended care and maintenance					--	--	--	11%
	Other					4%	5%	1%	1%

In what settings do the young people live?

Table 1.3: Percentage of young people in Ontario in different placement settings.

Age Group		CAS				ON			
		0-4	5-9	10-15	16-21	0-4	5-9	10-15	16-21
Placement setting	Foster home*					78%	64%	53%	33%
	Foster home**					9%	17%	17%	12%
	Group home**					0.4%	4%	16%	17%
	Kinship care					8%	12%	8%	5%
	Group home*					0%	1%	3%	4%
	Children's mental health residential facility					0%	0.5%	1%	1%
	Regular hospital (short-term)					0%	0%	0%	0%
	Customary care					1%	1%	0.2%	0%
	Custody/Detention facility					0%	0%	0.2%	2%
	With birth parents					0.2%	0%	0.2%	0.7%
	With relatives (not in care)					0.1%	0.1%	0.1%	2%
	Psychiatric facility					0%	0%	0%	0%
	Adoption probation					0.7%	0.1%	0%	0%
	Independent living					--	--	--	8%
Other					0.1%	0.1%	0.6%	17%	

* operated by child welfare organization

** outside purchased care

As illustrated in Table 1.3, the top five placement settings for the Ontario population of children aged zero to four years are: foster home operated by child welfare organization, foster home – outside purchased care, kinship care, customary care, and adoption probation. Together, these five placement settings are home to 96.7 percent of Ontario children in care aged zero to four years.

The top five placement settings for the Ontario population of young people aged five to 15 years are: foster home operated by child welfare organization, foster home – outside purchased care, group home – outside purchased care, kinship care, and group home operated by child welfare organization. Together, these five placement settings are home to 97.5 percent of Ontario young people in care aged five to 15 years.

The top five placement or residential settings for the Ontario population of young people aged 16 to 21 years are: foster home operated by child welfare organization, other, group home – outside purchased care, foster home – outside purchased care, and independent living. Together, these five placement or residential settings are home to 87 percent of Ontario young people in care aged 16 to 21 years.

The environments that the Ontario young people live in are varied, with 44 percent living in urban areas with a population of 100,000 or greater, and 28 percent living in urban areas with a population of less than 30,000 to 99,999. Twenty-six percent of young people live in rural areas, while one percent live in remote Northern areas and less than one percent live on First Nations reserves.

The language spoken most often in the homes of the young people is English, at 89 percent. Five percent of young people speak French most often, 0.5 percent speak a First Nations' language, and 1.4 percent report speaking another language at home. (Note: respondents could select more than one language.)

Ninety-one percent of homes are smoke-free, while nine percent of respondents report that smoking occurs in the home either daily or occasionally.

What adversities have these young people faced?

Table 1.4: Reasons for admission to care.

Age Group		CAS				ON			
		0-4	5-9	10-15	16-21	0-4	5-9	10-15	16-21
Reasons for admission to care	Physical harm					29%	28%	31%	25%
	Sexual harm					3%	6%	10%	9%
	Neglect					72%	76%	63%	44%
	Emotional harm					30%	41%	41%	29%
	Abandonment/Separation					10%	14%	18%	19%
	Problematic behaviour					1%	9%	21%	28%
	Domestic violence					25%	32%	24%	13%
	Other					22%	14%	12%	10%

Note: respondents could select more than one option.

Table 1.5: Adverse life experiences since birth.

Age Group		CAS				ON			
		0-4	5-9	10-15	16-21	0-4	5-9	10-15	16-21
Adverse life experiences	Death of a birth parent					2%	5%	11%	12%
	Death of brother or sister					1%	2%	3%	4%
	Death of relative or close friend					3%	8%	15%	37%
	Divorce or separation of birth parents					29%	46%	50%	45%
	Birth mother's abuse of drugs or alcohol					50%	54%	46%	35%
	Birth father's abuse of drugs or alcohol					36%	39%	33%	29%
	Violence between parents					38%	52%	41%	31%
	Birth mother spent time in jail					13%	13%	12%	13%
	Birth father spent time in jail					23%	26%	21%	24%
	Serious physical illness of birth mother					2%	4%	8%	14%
	Serious physical illness of birth father					2%	2%	3%	8%
	Serious psychiatric disturbance of birth mother					14%	18%	21%	17%
	Serious psychiatric disturbance of birth father					7%	6%	7%	6%
	Physical abuse					9%	21%	31%	34%
	Sexual abuse					1%	7%	15%	17%
	Emotional abuse					18%	44%	48%	41%
	Neglect					54%	78%	68%	44%
Severe poverty					16%	28%	25%	21%	

Note: respondents could select more than one option.

Who looks after the young people?

CAS Staff

Table 1.6: Basic demographic information on child welfare worker.

Age Group		CAS				ON			
		0-4	5-9	10-15	16-21	0-4	5-9	10-15	16-21
Gender of child welfare worker	Male					5%	9%	14%	14%
	Female					95%	91%	86%	86%
Length of time working with this child	Less than one year					48%	34%	30%	29%
	One to three years					47%	50%	44%	42%
	Four to nine years					4%	15%	24%	26%
	10 years or more					1%	1%	3%	4%
Total length of time working in child welfare	Less than one year					5%	7%	4%	5%
	One to three years					23%	19%	16%	15%
	Four to nine years					51%	49%	47%	45%
	10 years or more					20%	25%	33%	35%
Highest level of education achieved by child welfare worker	Less than high school diploma					0.2%	0.4%	0.1%	0.1%
	High school diploma					0.5%	0.4%	0.4%	0.2%
	Trade, vocational, apprenticeship certificate					0.5%	0.1%	0.2%	0.4%
	Non-university certificate or college diploma					13%	12%	12%	14%
	University certificate or diploma below Bachelor's level					2%	2%	2%	2%
	Bachelor's degree					55%	56%	60%	58%
	University certificate or diploma above Bachelor's level					12%	14%	9%	10%
	Master's degree					17%	15%	16%	15%
Doctoral degree					0%	0.4%	0.3%	0.2%	
Does child welfare worker speak the young person's primary language?	Yes					99%	99%	99%	98%
	No					1%	1%	1%	2%

Table 1.7: Training child welfare worker has received in Looking After Children

Age Group		CAS				ON			
		0-4	5-9	10-15	16-21	0-4	5-9	10-15	16-21
Total training in Looking After Children	Three days or more (12 hours+)					16%	21%	25%	25%
	Two days (7-12 hours)					64%	62%	61%	62%
	One day (6 hours)					7%	6%	6%	6%
	Less than one full day (less than 6 hours)					5%	4%	3%	2%
	No formal training					8%	7%	5%	5%
Frequency of discussion of AAR in supervision	Very often					17%	18%	22%	25%
	Sometimes					53%	55%	54%	52%
	Almost never					10%	11%	10%	11%
	Not applicable (first AAR completed)					20%	16%	14%	13%

Caregivers

Table 1.8: Basic demographic information on the caregiver.

Age Group		CAS				ON			
		0-4	5-9	10-15	16-17	0-4	5-9	10-15	16-17
Gender	Male					2%	7%	14%	19%
	Female					98%	93%	87%	81%
Years providing foster care, in total	Less than one year					12%	6%	6%	11%
	One to three years					26%	24%	16%	17%
	Four to nine years					35%	43%	40%	35%
	10 years or more					27%	27%	38%	37%
Ethnicity the same or similar to the young person?	Same					48%	49%	51%	45%
	Similar					30%	29%	30%	35%
	Neither the same nor similar					22%	22%	19%	19%
Caregiver's health	Excellent					44%	42%	41%	36%
	Very good					42%	41%	41%	42%
	Good					14%	15%	16%	20%
	Fair					0.6%	1%	2%	2%
	Poor					0.1%	0.1%	0.3%	0.3%

Note: The term "caregiver" refers to the adult caregiver who is considered the most knowledgeable about the young person. He or she is the caregiver most actively involved in the young person's care. These questions are asked only of young people in the 0-17 age groups.

Table 1.9: Training caregiver has received in Looking After Children (and other programs)

Age Group		CAS				ON			
		0-4	5-9	10-15	16-17	0-4	5-9	10-15	16-17
Total training in Looking After Children	Three days or more (12 hours+)					19%	19%	22%	20%
	Two days (7-12 hours)					37%	36%	34%	30%
	One day (6 hours)					8%	7%	7%	9%
	Less than one full day (less than 6 hours)					4%	4%	3%	3%
	No formal training					33%	34%	34%	38%
Training in programs other than Looking After Children	PRIDE*					57%	48%	36%	22%
	Agency-specific program					65%	65%	61%	40%
	Foster parent techniques (offered by CEGEP or college)					23%	14%	14%	11%
	Other training program					33%	36%	37%	27%

Note: Respondents were able to choose more than one training program other than Looking After Children

* Parenting Resources for Information, Development, and Education program.

What is the temporal stability associated with different types of placement settings?

This section illustrates the stability associated with the top five placement settings for each age group.

Table 2.1: Measures of temporal stability by placement setting and overall.

Age Group		CAS	ON		CAS		ON			CAS	ON
		0-4	0-4		5-9	10-15	5-9	10-15		16-17	16-17
Average years in placement	Foster home*		1.3	Foster home*			2.8	4.3	Foster home*		4.6
	Foster home**		1.3	Foster home**			2.8	3.4	Other		1.6
	Kinship care		1.4	Group home**			2.1	1.9	Group home**		1.7
	Customary care		1.7	Kinship care			3.5	3.9	Foster home**		3.2
	Adoption probation		1.6	Group home*			2.2	1.5	Independent living		--
	Overall		1.3	Overall			2.8	3.6	Overall		3.3
Average changes in main caregiver since birth	Foster home*		2.7	Foster home*			3.7	4.1	Foster home*		4.5
	Foster home**		2.8	Foster home**			3.9	4.9	Other		7.3
	Kinship care		2.7	Group home**			5.4	5.4	Group home**		6.6
	Customary care		2.1	Kinship care			3.1	3.8	Foster home**		5.9
	Adoption probation		2.7	Group home*			3.6	5.6	Independent living		--
	Overall		2.7	Overall			3.8	4.5	Overall		5.6
Average changes in place of residence since birth	Foster home*		3.0	Foster home*			4.7	5.8	Foster home*		6.8
	Foster home**		3.3	Foster home**			4.9	6.8	Other		9.8
	Kinship care		3.4	Group home**			4.1	6.9	Group home**		7.7
	Customary care		3.4	Kinship care			4.7	6.4	Foster home**		7.1
	Adoption probation		2.7	Group home*			4.1	6.6	Independent living		--
	Overall		3.1	Overall			4.8	6.3	Overall		7.7

* operated by child welfare organization

** outside purchased care

Note: The above questions are asked only of the 0-17 age groups. "Independent living" as a placement setting appears only in the 18-21 AAR-C2-2006.

Provincial range years in placement overall by age group: 0-4 = 0.1-4.92 years; 5-9 = 0.1-9.8 years; 10-15 = 0.1-15.5 years; 16-21 = 0.1-17 years

Provincial range changes in main caregiver since birth by age group: 0-4 = 1-60 caregivers; 5-9 = 1-63 caregivers; 10-15 = 1-99 caregivers; 16-17 = 1-35 caregivers

Provincial range changes in place of residence since birth by age group: 0-4 = 1-27 changes; 5-9 = 1-61 changes; 10-15 = 1-99 changes; 16-17 = 1-90 changes

Table 2.2: Permanency of placement by placement setting.

Age Group		CAS	ON		CAS		ON			CAS	ON
		0-4	0-4		5-9	10-15	5-9	10-15		16-17	16-17
Young people who are in a permanent placement (as reported by the caregiver)	Foster home*		22%	Foster home*			53%	83%	Foster home*		88%
	Foster home**		20%	Foster home**			61%	80%	Other		47%
	Kinship care		60%	Group home**			52%	52%	Group home**		58%
	Customary care		50%	Kinship care			79%	84%	Foster home**		81%
	Adoption probation		100%	Group home*			31%	40%	Independent living		--
	Overall		26%	Overall			57%	76%	Overall		76%
Young people who have a permanency plan	Foster home*		76%	Foster home*			76%	83%	Foster home*		86%
	Foster home**		69%	Foster home**			72%	77%	Other		83%
	Kinship care		78%	Group home**			68%	74%	Group home**		80%
	Customary care		67%	Kinship care			87%	84%	Foster home**		77%
	Adoption probation		100%	Group home*			100%	70%	Independent living		--
	Overall		75%	Overall			77%	80%	Overall		82%
Young people who have had “much” continuity of care (as reported by the child welfare worker)	Foster home*		77%	Foster home*			79%	83%	Foster home*		78%
	Foster home**		71%	Foster home**			75%	74%	Other		12%
	Kinship care		68%	Group home**			72%	53%	Group home**		51%
	Customary care		91%	Kinship care			85%	83%	Foster home**		67%
	Adoption probation		83%	Group home*			54%	49%	Independent living		--
	Overall		75%	Overall			78%	74%	Overall		56%
All feasible action is being taken to create or maintain a permanent placement (as reported by the child welfare worker)	Foster home*		99%	Foster home*			99%	100%	Foster home*		99%
	Foster home**		99%	Foster home**			98%	100%	Other		96%
	Kinship care		100%	Group home**			98%	99%	Group home**		98%
	Customary care		100%	Kinship care			100%	100%	Foster home**		99%
	Adoption probation		100%	Group home*			100%	96%	Independent living		--
	Overall		99%	Overall			99%	99%	Overall		99%

* operated by child welfare organization

** outside purchased care

Note: The above questions are asked only of the 0-17 age groups. “Independent living” as a placement setting appears only in the 18-21 AAR-C2-2006.

Quality of Care

Experiences in Care

Table 2.3: Percentage of young people who feel they can talk to different people in their lives.

Age Group		CAS		ON	
		10-15	16-17	10-15	16-17
People who the young people feel they can talk to	Foster mother			70%	48%
	Foster father			48%	30%
	Birth mother			33%	30%
	Birth father			17%	16%
	Brother			28%	25%
	Sister			31%	30%
	Grandparents			27%	24%
	Other relative			22%	23%
	Birth parent's partner			5%	7%
	A friend of the family or a friend's parent			20%	21%
	Teacher			40%	26%
	Coach or leader			12%	9%
	Child welfare worker			61%	54%
	Babysitter			5%	1%
	Boyfriend or girlfriend			14%	32%
Other			31%	27%	
Age Group		CAS	ON		
		10-15	10-15	CAS	ON
				16-17	16-17
Average number of people the young people feel they can talk to (by placement setting)	Foster home*		5.3	Foster home*	5.1
	Foster home**		5.4	Other	3.9
	Group home**		4.4	Group home**	4.0
	Kinship care		5.0	Foster home**	5.1
	Group home*		4.5	Independent living	--
	Overall		5.1	Overall	4.6

Note: Respondents could select more than one answer. This question above is only asked of 10 to 17 year olds.

Provincial range average number of people the young people feel they can talk to by age group: 10-15 = 1-16 people; 16-17 = 1-14 people.

Table 2.4: Breakdown of placement satisfaction by placement setting and overall.

Age Group		CAS	ON			CAS	ON
		10-15	10-15			16-17	16-17
Average placement satisfaction score	Foster home*		10.9	Foster home*		10.7	
	Foster home**		10.8	Other		9.1	
	Group home**		7.4	Group home**		7.6	
	Kinship care		10.9	Foster home**		10.6	
	Group home*		7.9	Independent living		--	
	Overall		10.2	Overall		9.6	

Note: Placement satisfaction is a six-item, three-point scale comprised of the following items: “You like living here”, “You feel safe living in this home”, “You would be pleased if you were to live here for a long time”, “You are satisfied with the amount of privacy you have here”, “You have a good relationship with other people with whom you are living” and “Overall, you are satisfied with your current living situation.” The possible responses for each item are as follows: Very little, scored 0; Some, scored 1; A great deal, scored 2. The possible total score range is 0-12, with a higher score indicating greater placement satisfaction.

The question above is asked only of 10-17 year olds.

* operated by a child welfare organization

** outside purchased care

Table 2.5: Breakdown of average positive life experiences by placement setting and overall.

Age Group		CAS	ON			CAS	ON
		10-15	10-15			16-17	16-17
Average number of positive life experiences	Foster home*		17.7	Foster home*		16.5	
	Foster home**		17.2	Other		12.9	
	Group home**		15.3	Group home**		14.3	
	Kinship care		17.9	Foster home**		16.3	
	Group home*		15.1	Independent living		--	
	Overall		17.1	Overall		15.2	

Note: Positive life experiences are opportunities that the young people have had over the last year or two. There are 22 positive life experiences included in the AAR and the young person is asked which of them he/she has experienced. The total possible range of scores is 1-22. Positive life experiences are reported by young people in the 10-17 age groups.

* operated by a child welfare organization

** outside purchased care

Parenting

Table 2.6: Average feelings toward caregivers by placement setting and overall.

Age Group		CAS	ON		CAS	ON
		10-15	10-15		16-17	16-17
Young person's feelings toward female caregiver	Foster home*		6.9	Foster home*		6.5
	Foster home**		4.7	Other		5.5
	Group home**		5.7	Group home**		5.5
	Kinship care		6.8	Foster home**		6.5
	Group home*		5.7	Independent living		--
	Overall		6.6	Overall		6.2
Young person's feelings toward male caregiver	Foster home*		6.2	Foster home*		5.8
	Foster home**		6.2	Other		4.3
	Group home**		5.4	Group home**		5.2
	Kinship care		6.0	Foster home**		5.9
	Group home*		5.0	Independent living		--
	Overall		6.0	Overall		5.5

Note: The Feelings Toward Caregiver score is a four-item, three-point scale. The items are: "How well do you feel he/she understands you", "How much fairness do you receive from him/her?", "How much affection do you receive from him/her?" and the response choices for these questions are: A great deal, Some, and Very little. The final question is "Overall, how would you describe your relationship with her?" and the response choices are: Very close, scored 2; Somewhat close, scored 1; Not very close, scored 0. The total positive range of scores is 0-8. Higher scores on this scale indicate a greater degree of parental acceptance perceived by the young person.

This score is reported by young people in the 10-17 age groups.

* operated by a child welfare organization

** outside purchased care

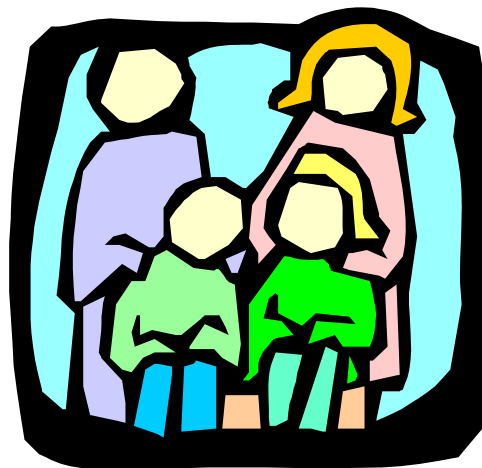


Table 2.7: Parenting scores by placement setting and overall.

Age Group		CAS	ON		CAS		ON			CAS	ON
		0-4	0-4		5-9	10-15	5-9	10-15		16-17	16-17
Positive Parenting Score	Foster home*		17.9	Foster home*			14.6	15.6	Foster home*		15.2
	Foster home**		17.7	Foster home**			14.5	15.5	Other		14.2
	Kinship care		17.4	Group home**			16.9	15.4	Group home**		15.2
	Customary care		17.8	Kinship care			13.9	15.2	Foster home**		15.2
	Adoption probation		18.0	Group home*			15.1	15.3	Independent living		--
	Overall		17.9	Overall			14.6	15.5	Overall		15.1
Nurturing Parenting Score Total possible range: 0-14	Foster home*		--	Foster home*			--	12.5	Foster home*		12.0
	Foster home**		--	Foster home**			--	12.4	Other		10.2
	Kinship care		--	Group home**			--	11.2	Group home**		10.8
	Customary care		--	Kinship care			--	12.0	Foster home**		11.9
	Adoption probation		--	Group home*			--	11.1	Independent living		--
	Overall		--	Overall			--	12.2	Overall		11.6
Ineffective Parenting Score (for 3-17 year olds)	Foster home*		7.3	Foster home*			7.8	2.6	Foster home*		2.6
	Foster home**		7.1	Foster home**			7.7	2.6	Other		3.1
	Kinship care		7.4	Group home**			6.4	3.7	Group home**		3.7
	Customary care		9.2	Kinship care			8.3	3.5	Foster home**		2.7
	Adoption probation		5.7	Group home*			6.7	3.3	Independent living		--
	Overall		7.3	Overall			7.8	2.9	Overall		2.9

Note: The scales described are reported by the caregivers of young people in the 0-17 age groups (unless otherwise noted).

The Positive Parenting scale for 0-9 year olds is a parent-reported, five-item, five-point scale. An examples of items included in the scale is: "How often do you and the child laugh together?" Response choices are: Many times each day, scored 4; One or two times a day, scored 3; A few times a week, scored 2; About once a week or less, scored 1; and Never, scored 0. The total possible range is 0-20. Higher scores on this scale indicate a greater number of positive interactions.

The Positive Parenting scale for 10-17 year olds is a parent-reported, eight-item, three-point scale. Examples of items included in the scale are: "I praise ...'s effort and help in the home" and "I include ... in celebrations in the home." Response choices are: Often or always, scored 2; Sometimes, scored 1; and Never or rarely, scored 0. The total possible range is 0-16. Higher scores on this scale indicate a greater number of positive interactions.

The Nurturing Parenting Practices scale is a youth-reported, seven-item, three-point scale. Examples of items included in the scale are: "My foster parent[s] (or other adult caregiver[s]) listen to my ideas and opinions" and "My foster parent[s] (or other adult caregiver[s]) seem proud of the things I do." Response choices are: Often or always, scored 2; Sometimes, scored 1; and Never or rarely, scored 0. Higher scores on this scale indicate greater degree of parental nurturance perceived by the young person.

The Ineffective Parenting Practices scale for 3-9 year olds is a parent-reported, seven-item, five-point scale. An example of items included in the scale is: "How often do you get angry when you punish the child?" Wording differs depending on the specific age group of the child. Response choices are: All the time, scored 4; More than half the time, scored 3; About half the time, scored 2; Less than half the time, scored 1; and Never, scored 0. Note that one of the questions is reverse coded. The total possible range is 0-28. Higher scores on this scale indicate a greater number of ineffective interactions.

The Ineffective Parenting Practices scale for 10-17 year olds is a youth-reported, six-item, three-point scale. Examples of items included in the scale are: "My foster parent[s] (or other adult caregiver[s]) soon forget a rule they have made" and "My foster parent[s] (or other adult caregiver[s]) get angry and yell at me." Response choices are: Often or always, scored 2; Sometimes, scored 1; and Never or rarely, scored 0. The total possible range is 0-18. Higher scores on this scale indicate a greater degree of parental rejection perceived by the young person.

* operated by a child welfare organization

** outside purchased care

Table 2.8: Health services received by placement setting and overall.

Age Group		CAS	ON		CAS		ON			CAS	ON
		0-4	0-4		5-9	10-15	5-9	10-15		16-21	16-21
Young people who have had a medical examination in the last year	Foster home*		97%	Foster home*			97%	96%	Foster home*		93%
	Foster home**		99%	Foster home**			98%	98%	Other		88%
	Kinship care		97%	Group home**			100%	99%	Group home**		98%
	Customary care		90%	Kinship care			92%	92%	Foster home**		99%
	Adoption probation		100%	Group home*			100%	97%	Independent living		65%
	Overall		97%	Overall			96%	97%	Overall		91%
Young people who have had a dental examination in the last year	Foster home*		37%	Foster home*			97%	98%	Foster home*		97%
	Foster home**		52%	Foster home**			100%	99%	Other		80%
	Kinship care		50%	Group home**			100%	99%	Group home**		98%
	Customary care		30%	Kinship care			95%	96%	Foster home**		98%
	Adoption probation		0%	Group home*			100%	93%	Independent living		74%
	Overall		40%	Overall			98%	98%	Overall		91%
Young people taking psychotropic medications who are being monitored by a health care professional**	Foster home*		5%	Foster home*			80%	81%	Foster home*		65%
	Foster home**		14%	Foster home**			85%	87%	Other		52%
	Kinship care		12%	Group home**			91%	94%	Group home**		86%
	Customary care		17%	Kinship care			65%	55%	Foster home**		82%
	Adoption probation		0%	Group home*			86%	83%	Independent living		--
	Overall		7%	Overall			80%	84%	Overall		75%
Young people whose immunizations are up to date	Foster home*		96%	Foster home*			98%	97%	Foster home*		97%
	Foster home**		99%	Foster home**			98%	99%	Other		94%
	Kinship care		90%	Group home**			98%	96%	Group home**		96%
	Customary care		100%	Kinship care			99%	98%	Foster home**		96%
	Adoption probation		100%	Group home*			92%	99%	Independent living		94%
	Overall		96%	Overall			98%	97%	Overall		95%

* operated by a child welfare organization

** outside purchased care

*****Note:** This question is asked of young people in the 0-17 age groups**Figure 2.9:** Percentage of young people who have an RESP or a Canada Learning Bond by placement setting.

Age Group		CAS	ON		CAS		ON			CAS	ON
		0-4	0-4		5-9	10-15	5-9	10-15		16-21	16-21
Young people who have an RESP or a Canada Learning Bond	Foster home*		10%	Foster home*			9%	7%	Foster home*		7%
	Foster home**		12%	Foster home**			10%	4%	Other		4%
	Kinship care		14%	Group home**			2%	4%	Group home**		4%
	Customary care		27%	Kinship care			15%	9%	Foster home**		5%
	Adoption probation		20%	Group home*			8%	4%	Independent living		5%
	Overall		11%	Overall			10%	6%	Overall		6%

* operated by a child welfare organization

** outside purchased care

Opportunities for First Nations Young People

Table 2.10: Opportunities for First Nations young people by placement setting and overall.

Age Group		CAS	ON	CAS		ON		CAS	ON
		0-4	0-4	5-9	10-15	5-9	10-15	16-17	16-17
Young people who report or are reported as being of First Nations descent			22%			23%	18%		16%
Young people who report having enough opportunities to visit their First Nation's community***	Foster home*		31%	Foster home*		41%	58%	Foster home*	55%
	Foster home**		36%	Foster home**		17%	54%	Other	71%
	Kinship care		71%	Group home**		50%	46%	Group home**	56%
	Customary care		46%	Kinship care		45%	67%	Foster home**	41%
	Adoption probation		--	Group home*		0%	47%	Independent living	--
	Overall		35%	Overall		42%	56%	Overall	57%
Young people who report having enough opportunities to participate in their First Nations community events, activities, or festivals***	Foster home*		39%	Foster home*		57%	69%	Foster home*	68%
	Foster home**		46%	Foster home**		50%	66%	Other	77%
	Kinship care		71%	Group home**		100%	51%	Group home**	71%
	Customary care		55%	Kinship care		55%	68%	Foster home**	52%
	Adoption probation		--	Group home*		50%	40%	Independent living	--
	Overall		42%	Overall		57%	64%	Overall	69%

Note: These questions are caregiver-reported for the 0-9 age group, and youth reported for the 10-17 age group. Young people in the 18-21 age group are included in the population who reported being of First Nations descent.

* operated by a child welfare organization

** outside purchased care

External Assets

The Search Institute has identified the following twenty external assets as building blocks that help young people grow up healthy, caring, and responsible. External assets fall under the following categories: Support, Empowerment, and Boundaries and Expectations, and Constructive Use of Time. Together with the Internal Assets (page 34), these make up a young person's Asset Profile (page 34).

Table 2.11: Average external assets by placement setting and overall.

Age Group		CAS		ON		CAS	ON
		5-9	10-15	5-9	10-15	16-21	16-21
Average number of external assets	Foster home*			14.5	13.3	Foster home*	13.2
	Foster home**			14.6	13.1	Other	9.2
	Group home**			14.2	11.2	Group home**	10.9
	Kinship care			14.3	13.2	Foster home**	12.6
	Group home*			14.5	11.2	Independent living	10.9
	Overall			14.4	12.8	Overall	11.6

Note: Possible range of scores for 5-9 age group is 1-16. Possible range for 10-21 age group is 1-20.

* operated by a child welfare organization

** outside purchased care

Education: How are the Young People Doing?

Table 3.1: Academic achievement as rated by caregivers.

Age Group		CAS				ON			
		5-9	10-11	12-15	16-17	5-9	10-11	12-15	16-17
Reading (and other language arts for 12-17 year olds)	Very well or well					28%	32%	28%	27%
	Average					41%	44%	51%	53%
	Poorly or very poorly					31%	24%	21%	20%
Mathematics	Very well or well					20%	20%	24%	20%
	Average					50%	57%	50%	51%
	Poorly or very poorly					30%	33%	27%	29%
Written Work (for 5-11 year olds)	Very well or well					17%	18%	--	--
	Average					45%	46%	--	--
	Poorly or very poorly					38%	36%	--	--
Science (for 12-17 year olds)	Very well or well					--	--	23%	20%
	Average					--	--	57%	55%
	Poorly or very poorly					--	--	20%	25%
Overall academic achievement	Very well or well					21%	20%	23%	21%
	Average					51%	57%	59%	60%
	Poorly or very poorly					28%	23%	18%	19%
Academic achievement scale	Mean					3.6	3.7	4.1	3.9
	Median					4.0	4.0	4.0	4.0

Note: The above questions are asked pertaining to young people in the 5 to 17 age group. The Academic Achievement scale is a four-item, three-point scale, made up of the subjects above. Response choices are the same as above: Very well or well, scored 2; Average, scored 1; Poorly or very poor, scored 0. Range of possible scores is from 0 to 8. Higher scores on this scale indicate greater school performance, as rated by the caregiver.

Table 3.2: Young people’s rating of their own school success.

Age Group		CAS		ON	
		10-15	16-17	10-15	16-17
Young people’s rating of their own school success	Very well or well			36%	47%
	Average			55%	35%
	Poorly or very poor			9%	18%

Note: This question is asked only of young people in the 10-17 age groups.



Figure 3.1: Percentage of young people who have or have not ever repeated a grade.

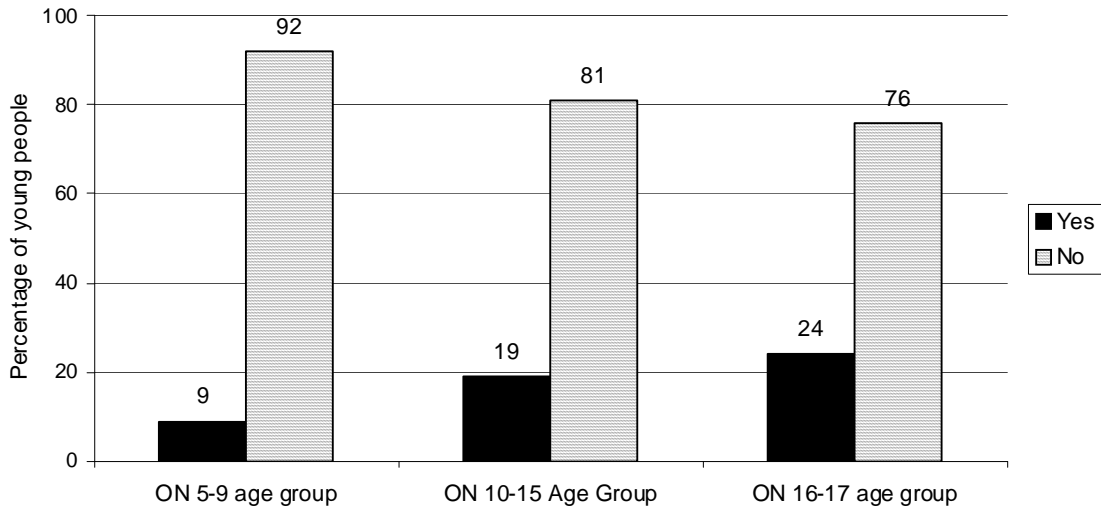


Table 3.3: Percentage of young people reporting the importance of school-related activities.

Age Group		CAS		ON	
		10-15	16-17	10-15	16-17
Get good grades?	Very important			68%	63%
	Somewhat important			27%	31%
	Not important			5%	6%
Make friends?	Very important			64%	49%
	Somewhat important			30%	39%
	Not important			7%	13%
Participate in extracurricular activities?	Very important			38%	24%
	Somewhat important			40%	34%
	Not important			22%	42%
Learn new things?	Very important			57%	49%
	Somewhat important			38%	44%
	Not important			5%	7%
Always show up to class on time?	Very important			65%	50%
	Somewhat important			26%	36%
	Not important			9%	15%
Express your opinion in class?	Very important			41%	44%
	Somewhat important			44%	37%
	Not important			16%	19%
Take part in student council or other similar groups?	Very important			14%	7%
	Somewhat important			26%	18%
	Not important			60%	75%
Hand in assignments on time?	Very important			65%	58%
	Somewhat important			27%	32%
	Not important			8%	10%

Note: The above questions are asked only of young people in the 10-17 age groups

Table 3.4: Level of education that caregivers and young people hope is achieved.

Age Group		CAS				ON			
		0-4	5-9	10-15	16-21	0-4	5-9	10-15	16-21
Primary/elementary school	Young person					--	--	--	--
	Caregiver					0.2%	0.7%	0.3%	--
Middle school/junior high	Young person					--	--	0.6%	4%
	Caregiver					--	--	--	6%
Secondary or high school	Young person					--	--	10%	18%
	Caregiver					4%	10%	11%	18%
Technical, trade, or vocational school	Young person					--	--	9%	12%
	Caregiver					3%	17%	24%	17%
College/CEGEP/ apprenticeship program	Young person					--	--	34%	46%
	Caregiver					21%	25%	30%	45%
University degree	Young person					--	--	27%	16%
	Caregiver					68%	44%	31%	13%
More than one university degree	Young person					--	--	6%	4%
	Caregiver					--	--	--	2%
Other	Young person					--	--	1%	0%
	Caregiver					3%	4%	4%	0%
I don't know	Young person					--	--	12%	--
	Caregiver					--	--	--	--

Table 3.5: Average grade achieved by school stream.

Age Group		CAS		ON	
		10-15	16-17	10-15	16-17
Academic (University-bound)	90%-100%			2%	6%
	80%-89%			24%	24%
	70%-79%			46%	36%
	60%-69%			19%	21%
	50%-59%			4%	6%
	Less than 50%			2%	3%
	Don't know			2%	3%
	Not applicable, ungraded			2%	1%
Applied (College-bound)	90%-100%			1%	2%
	80%-89%			9%	6%
	70%-79%			32%	30%
	60%-69%			32%	31%
	50%-59%			13%	14%
	Less than 50%			7%	5%
	Don't know			4%	6%
	Not applicable, ungraded			2%	2%
Other (e.g., special education)	90%-100%			1%	1%
	80%-89%			6%	12%
	70%-79%			20%	15%
	60%-69%			24%	15%
	50%-59%			10%	21%
	Less than 50%			6%	3%
	Don't know			5%	10%
	Not applicable, ungraded			29%	26%

Note: This table is comprised only of those young people who are currently attending high school in a regular grade 9, 10, 11, or 12.

Table 3.6: Young person’s feelings about different school subjects.

Age Group		CAS		ON	
		10-15	16-17	10-15	16-17
Mathematics	I like it a lot			29%	22%
	I like it a little			37%	30%
	I don’t like it very much			15%	19%
	I hate it			16%	23%
	I don’t take it			3%	7%
English	I like it a lot			35%	33%
	I like it a little			38%	36%
	I don’t like it very much			14%	14%
	I hate it			9%	11%
	I don’t take it			5%	7%
French	I like it a lot			18%	7%
	I like it a little			19%	10%
	I don’t like it very much			13%	8%
	I hate it			17%	21%
	I don’t take it			33%	54%
Science*	I like it a lot			34%	27%
	I like it a little			34%	31%
	I don’t like it very much			11%	11%
	I hate it			9%	14%
	I don’t take it			12%	17%
Gym/Phys. Ed.**	I like it a lot			66%	--
	I like it a little			15%	--
	I don’t like it very much			5%	--
	I hate it			5%	--
	I don’t take it			8%	--
Arts (including music and drama)**	I like it a lot			59%	--
	I like it a little			21%	--
	I don’t like it very much			6%	--
	I hate it			4%	--
	I don’t take it			10%	--

*This subject is only asked of 12-17 year olds.

**These specific subjects are only asked of 12-15 year olds.

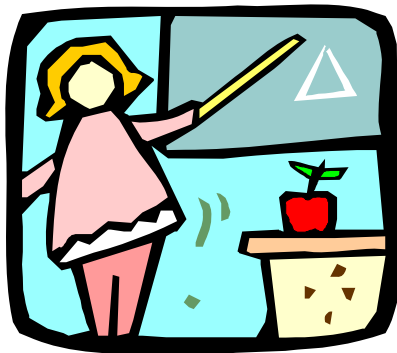


Table 3.7: Average frequency of literacy-promoting activities, as reported by the caregiver.

Age Group		CAS	ON	CAS	ON	CAS		ON
		1-2	1-2	3-4	3-4			5-9
Average frequency of literacy-promoting activities	Foster home*		24.2		42.9	Foster home*		22.8
	Foster home**		25.8		43.5	Foster home**		22.3
	Kinship care		23.7		45.2	Group home**		19.3
	Customary care		22.5		47.4	Kinship care		23.3
	Adoption probation		26.0		--	Group home*		22.5
	Overall		24.3		43.2	Overall		22.7

Note: The Literacy-Promoting Scale for children aged 1-2 is an eight-item, five-point scale, reported by the caregiver. A sample question from the scale is: “How often do you (or your spouse or partner) get the chance to do the following with the child: Read stories or show pictures or wordless baby books?” and response choices are: Daily, scored 4; A few times a week, scored 3; Once a week, scored 2; A few times a month, scored 1; Rarely or never, scored 0. The possible range is 0 to 32, with a higher score indicating more frequent literacy promoting activities.

The Literacy-Promoting Scale for children aged 3-4 is a 15-item, five-point scale, reported by the caregiver. A sample question from the scale is: “How often do you (or your spouse or partner) get the chance to do the following with the child: Teach him/her to name printed letters and/or numbers?” and response choices are: Daily, scored 4; A few times a week, scored 3; Once a week, scored 2; A few times a month, scored 1; Rarely or never, scored 0. The possible range is 0 to 60, with a higher score indicating more frequent literacy promoting activities.

The Literacy-Promoting Scale for children aged 5-9 is a five-item, seven-point scale, reported by the caregiver. A sample question from the scale is: “How often does the child read (or – in the case of younger children – look at books or try to read on his/her own) for pleasure?” and response choices are: Daily, scored 6; A few times a week, scored 5; Once a week, scored 4; A few times a month, scored 3; Once a month, scored 2; Less than once a month, scored 1; Rarely or never, scored 0. The possible range is 0 to 35, with a higher score indicating more frequent literacy promoting activities.

* operated by a child welfare organization

** outside purchased care



How Physically Healthy are the Young People?

Figure 4.1: Health status of young people by placement setting.

Age Group		CAS	ON			CAS		ON				CAS	ON
		0-4	0-4			5-9	10-15	5-9	10-15			16-21	16-21
Foster home*	Excellent		46%	Foster home*	Excellent			52%	53%	Foster home*	Excellent		37%
	V. Good		34%		V. Good			34%	32%		V. Good		39%
	Good		15%		Good			11%	13%		Good		22%
	Fair		4%		Fair			2%	2%		Fair		2%
	Poor		1%		Poor			0.1%	0.4%		Poor		0.4%
Foster home**	Excellent		52%	Foster home**	Excellent			51%	49%	Other	Excellent		28%
	V. Good		31%		V. Good			36%	36%		V. Good		33%
	Good		14%		Good			10%	14%		Good		33%
	Fair		1%		Fair			3%	1%		Fair		5%
	Poor		3%		Poor			1%	0%		Poor		1%
Kinship care	Excellent		57%	Group home**	Excellent			31%	29%	Group home**	Excellent		27%
	V. Good		31%		V. Good			38%	38%		V. Good		37%
	Good		10%		Good			22%	26%		Good		30%
	Fair		3%		Fair			10%	6%		Fair		5%
	Poor		0%		Poor			0%	1%		Poor		1%
Customary care	Excellent		55%	Kinship care	Excellent			64%	58%	Foster home**	Excellent		43%
	V. Good		46%		V. Good			29%	27%		V. Good		38%
	Good		0%		Good			4%	15%		Good		16%
	Fair		0%		Fair			2%	0.4%		Fair		2%
	Poor		0%		Poor			1%	0%		Poor		0.6%
Adoption probation	Excellent		67%	Group home*	Excellent			85%	38%	Ind. living	Excellent		30%
	V. Good		17%		V. Good			15%	35%		V. Good		30%
	Good		17%		Good			0%	22%		Good		36%
	Fair		0%		Fair			0%	5%		Fair		4%
	Poor		0%		Poor			0%	0%		Poor		0%

* operated by a child welfare organization
 ** outside purchased care



Table 4.2: Young person's activity level compared to other youths by placement setting.

Age Group		CAS	ON			CAS		ON	
		0-4	0-4			5-9	10-15	5-9	10-15
Foster home*	Much more		15%	Foster home*	Much more			21%	17%
	Moderately more		24%		Moderately more			22%	22%
	Equally		53%		Equally			46%	45%
	Moderately less		6%		Moderately less			8%	14%
	Much less		2%		Much less			3%	3%
Foster home**	Much more		23%	Foster home**	Much more			26%	10%
	Moderately more		14%		Moderately more			18%	24%
	Equally		50%		Equally			44%	51%
	Moderately less		10%		Moderately less			8%	14%
	Much less		4%		Much less			4%	2%
Kinship care	Much more		16%	Group home**	Much more			27%	9%
	Moderately more		26%		Moderately more			16%	16%
	Equally		55%		Equally			27%	51%
	Moderately less		3%		Moderately less			10%	12%
	Much less		0%		Much less			22%	12%
Customary care	Much more		30%	Kinship care	Much more			20%	21%
	Moderately more		10%		Moderately more			28%	14%
	Equally		60%		Equally			46%	61%
	Moderately less		0%		Moderately less			4%	4%
	Much less		0%		Much less			2%	0%
Adoption probation	Much more		17%	Group home*	Much more			15%	11%
	Moderately more		17%		Moderately more			54%	22%
	Equally		67%		Equally			23%	56%
	Moderately less		0%		Moderately less			8%	11%
	Much less		0%		Much less			0%	0%

* operated by a child welfare organization

** outside purchased care

Table 4.3: Percentage of young people who have difficulties in one or more areas of physical ability.

Age Group		CAS				ON			
		1-4	5-9	10-15	16-17	1-4	5-9	10-15	16-17
Physical abilities	Speaking					30%	25%	8%	5%
	Walking					11%	7%	4%	4%
	Climbing					5%	6%	3%	2%
	Bending					3%	4%	4%	3%
	Seeing					10%	19%	22%	23%
	Hearing					5%	5%	4%	4%
	Using hands and fingers					7%	10%	4%	2%

Note: This question was asked only of young people in the 1-17 age groups.

Table 4.4: Average number of physical difficulties by placement setting.

Age Group		CAS	ON		CAS		ON			CAS	ON
		1-4	1-4		5-9	10-15	5-9	10-15		16-17	16-17
Average number of physical difficulties	Foster home*		1.7	Foster home*			1.8	1.5	Foster home*		0.4
	Foster home**		1.8	Foster home**			1.9	1.7	Other		0.3
	Kinship care		1.2	Group home**			3.3	1.7	Group home**		0.6
	Customary care		1.7	Kinship care			1.5	1.1	Foster home**		0.4
	Adoption probation		--	Group home*			1.1	1.6	Independent living		--
	Overall		1.7	Overall			1.9	1.5	Overall		0.4

Note: This question was asked only of young people in the 1-17 age groups.

* operated by a child welfare organization

** outside purchased care

Table 4.5: Percentage of young people who have long term conditions by placement setting.

Age Group		CAS				ON			
		0-4	5-9	10-15	16-21	0-4	5-9	10-15	16-21
Long-term conditions	Food or digestive allergies					8%	4%	4%	4%
	Respiratory allergies					3%	3%	5%	5%
	Any other allergies					3%	4%	7%	8%
	Asthma					10%	9%	8%	11%
	Bronchitis					2%	0.5%	0.7%	2%
	Heart condition or disease					3%	2%	1%	2%
	Epilepsy					0.1%	2%	2%	1%
	Cerebral palsy					2%	2%	2%	1%
	Kidney condition or disease					0.6%	0.3%	0.4%	1%
	Developmental disability					14%	16%	16%	12%
	Learning disability					7%	25%	39%	29%
	Attention deficit disorder					2%	30%	39%	25%
	Emotional, psychological, or nervous difficulties					6%	20%	29%	23%
	Fetal alcohol spectrum disorder					5%	9%	8%	5%
	Diabetes					0.1%	0.3%	0.5%	0.7%
	Blood disorder					0.1%	1%	0.3%	0.7%
Other long term condition					11%	10%	10%	9%	

Table 4.6: Average number of long-term conditions by placement setting.

Age Group		CAS	ON		CAS		ON			CAS	ON
		0-4	0-4		5-9	10-15	5-9	10-15		16-21	16-21
Average number of long-term conditions	Foster home*		1.8	Foster home*			2.1	2.3	Foster home*		2.1
	Foster home**		1.9	Foster home**			2.3	2.4	Other		1.9
	Kinship care		1.6	Group home**			3.2	2.8	Group home**		2.5
	Customary care		2.0	Kinship care			1.9	1.7	Foster home**		2.2
	Adoption probation		1.7	Group home*			1.8	2.1	Independent living		1.9
	Overall		1.8	Overall			2.2	2.3	Overall		2.2

* operated by a child welfare organization

** outside purchased care

Table 4.7: Health-related experiences by placement setting.

Age Group		CAS	ON		CAS		ON			CAS	ON
		0-4	0-4		5-9	10-15	5-9	10-15		16-21	16-21
Young people who report being usually free of pain and discomfort	Foster home*		--	Foster home*			--	81%	Foster home*		80%
	Foster home**		--	Foster home**			--	80%	Other		71%
	Kinship care		--	Group home**			--	76%	Group home**		69%
	Customary care		--	Kinship care			--	78%	Foster home**		80%
	Adoption probation		--	Group home*			--	75%	Independent living		69%
Young people who have spent an overnight in a hospital in the past 12 months	Foster home*		11%	Foster home*			5%	4%	Foster home*		7%
	Foster home**		13%	Foster home**			4%	5%	Other		13%
	Kinship care		4%	Group home**			9%	12%	Group home**		11%
	Customary care		0%	Kinship care			5%	3%	Foster home**		6%
	Adoption probation		17%	Group home*			8%	16%	Independent living		14%
Young people who report eating breakfast most school days	Foster home*		--	Foster home*			--	87%	Foster home*		67%
	Foster home**		--	Foster home**			--	85%	Other		44%
	Kinship care		--	Group home**			--	77%	Group home**		60%
	Customary care		--	Kinship care			--	83%	Foster home**		70%
	Adoption probation		--	Group home*			--	73%	Independent living		--

* operated by a child welfare organization

** outside purchased care

Figure 4.8: Most serious injuries experienced by young people within last 12 months.

Age Group		CAS				ON			
		0-4	5-9	10-15	16-17	0-4	5-9	10-15	16-17
Most serious injuries	Broken or fractured bones					26%	16%	22%	19%
	Burn or scald					14%	10%	4%	4%
	Dislocation					5%	3%	2%	3%
	Sprain or strain					2%	5%	21%	21%
	Cut, scrape, or bruise					31%	29%	33%	30%
	Concussion					2%	2%	2%	3%
	Poisoning by substance or liquid					2%	5%	3%	3%
	Internal injury					4%	11%	1%	5%
	Dental injury					6%	6%	3%	3%
	Other serious injury					9%	13%	9%	10%

Note: These results reflect only those young people whose caregivers responded “yes” when asked if the young person was seriously injured in the past 12 months.

Table 4.9: Young people's experience with cigarettes, alcohol, and drugs.

Age Group		CAS		ON	
		12-15	16-17	12-15	16-17
Smoking cigarettes	Daily			8%	33%
	Occasionally			6%	11%
	Not at all			86%	57%
Alcohol	I have never had a drink of alcohol			73%	30%
	I only tried once or twice, but I don't drink alcohol anymore			16%	20%
	At least one drink a few times a year			6%	21%
	At least one drink about one or twice a month			3%	20%
	At least one drink weekly or more often			1%	8%
Marijuana and cannabis products	I have never done it			82%	41%
	I have done it, but not during the past 12 months			4%	14%
	I have done it at least once in the past 12 months			15%	45%
Have you ever used other drugs?*	Yes			9%	25%
	No			91%	75%
Hallucinogens (LSD/acid, magic mushrooms)*	I have never done it			86%	68%
	I have done it, but not during the past 12 months			6%	13%
	I have done it at least once in the past 12 months			9%	20%
Glues or solvents*	I have never done it			96%	94%
	I have done it, but not during the past 12 months			1%	3%
	I have done it at least once in the past 12 months			3%	2%
Drugs without a prescription (downers, uppers, Ritalin, tranquilizers, etc.)*	I have never done it			88%	73%
	I have done it, but not during the past 12 months			4%	10%
	I have done it at least once in the past 12 months			8%	17%
Other drugs (crack, cocaine, heroin, ecstasy, etc.)*	I have never done it			83%	60%
	I have done it, but not during the past 12 months			5%	15%
	I have done it at least once in the past 12 months			12%	24%

*These questions are asked only of young people in the 12-17 age group.

What is the Status of the Young People's Emotional Health and Overall Well-Being?

Table 5.1: General self-esteem scores by placement setting.

Age Group		CAS	ON			CAS	ON
		10-15	10-15			16-17	16-17
Average general self-esteem score	Foster home*		7.0	Foster home*		6.9	
	Foster home**		6.7	Other		6.7	
	Group home**		6.3	Group home**		6.5	
	Kinship care		6.9	Foster home**		6.9	
	Group home*		6.4	Independent living		--	
	Overall		6.8	Overall		6.8	

Note: The General Self-Esteem scale is a four-item, three-point scale, reported by the young person. A sample question from the scale is: "A lot of things about me are good" and response choices are True or mostly true scored 2, Sometimes false/sometimes true scored 1, and False or mostly false scored 0. The possible range of scores is from 0 to 8, with a higher score indicating a greater degree of positive general self-image. These questions are asked only of young people in the 10-17 age group.

* operated by a child welfare organization

** outside purchased care

Figure 5.2: Physical self-esteem scores by placement setting.

Age Group		CAS	ON			CAS	ON
		10-15	10-15			16-17	16-17
Average physical self-esteem score	Foster home*		9.8	Foster home*		9.6	
	Foster home**		9.7	Other		9.8	
	Group home**		8.9	Group home**		9.4	
	Kinship care		9.6	Foster home**		9.8	
	Group home*		8.9	Independent living		--	
	Overall		9.6	Overall		9.6	

Note: The Physical Self-Esteem scale is a three-item, five-point scale, reported by the young person. A sample question from the scale is: "I am good looking" and response choices are: True, scored 4; Mostly true, scored 3; Sometimes false or sometimes true, scored 2; Mostly false, scored 1; and False, scored 0. The possible range of scores is from 0 to 12, with a higher score indicating a greater degree of positive physical self-image. These questions are asked only of young people in the 10-17 age group.

* operated by a child welfare organization

** outside purchased care

Table 5.3: Perceived quality of friendships by placement setting

Age Group		CAS	ON		CAS	ON
		10-15	10-15		16-17	16-17
Average quality of friendships score	Foster home*		3.3	Foster home*		3.4
	Foster home**		3.2	Other		3.1
	Group home**		3.1	Group home**		3.1
	Kinship care		3.5	Foster home**		3.2
	Group home*		3.1	Independent living		--
	Overall		3.3	Overall		3.2

Note: The Friendships scale is a two-item, three-point scale, reported by the young person. The items are: “I have many friends” and “I get along easily with others my age.” Response choices are: False or mostly false, scored 0; Sometimes false or sometimes true, scored 1; True or mostly true, scored 2. The possible range of scores is from 0 to 4, with a higher score indicating a greater number of positive relationships with friends. This scale applies only to young people in the 10-17 age group.

* operated by a child welfare organization

** outside purchased care

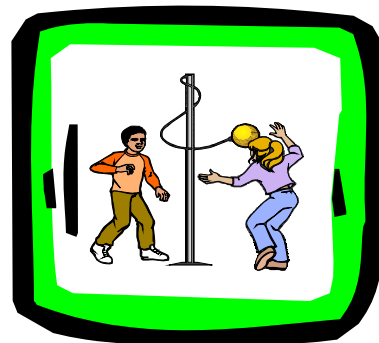


Figure 5.4: Total happiness score by placement setting.

Age Group		CAS	ON		CAS	ON
		10-15	10-15		16-17	16-17
Average happiness score	Foster home*		4.5	Foster home*		4.4
	Foster home**		4.3	Other		4.0
	Group home**		3.4	Group home**		3.8
	Kinship care		4.4	Foster home**		4.4
	Group home*		3.7	Independent living		--
	Overall		4.3	Overall		4.1

Note: The General Happiness scale is a two-item, four-point scale, reported by the young person. The items are: “In general, I am happy with how things are for me in my life now” and “The next five years look good to me.” Response choices are: Strongly disagree, scored 0; Disagree, scored 1; Agree, scored 2; Strongly agree, scored 3. The possible range of scores is from 0 to 6, with a higher score indicating a greater level of happiness and optimism. This scale applies only to young people in the 10-17 age group.

* operated by a child welfare organization

** outside purchased care

Table 5.5: Percentage of young people who responded “Most of the time” or “Often” to Hope Scale items by placement setting and total Hope Scale score by placement setting and overall.

Age Group		CAS	ON		CAS	ON
		10-15	10-15		16-17	16-17
I think I'm doing pretty well	Foster home*		89%	Foster home*		84%
	Foster home**		85%	Other		73%
	Group home**		68%	Group home**		69%
	Kinship care		89%	Foster home**		86%
	Group home*		68%	Independent living		--
I can think of many ways to get the things in life that are most important to me	Foster home*		83%	Foster home*		78%
	Foster home**		80%	Other		81%
	Group home**		69%	Group home**		70%
	Kinship care		88%	Foster home**		79%
	Group home*		65%	Independent living		--
I am doing just as well as other kids my age	Foster home*		80%	Foster home*		25%
	Foster home**		73%	Other		34%
	Group home**		58%	Group home**		39%
	Kinship care		85%	Foster home**		27%
	Group home*		52%	Independent living		--
When I have a problem, I can come up with lots of ways to solve it.	Foster home*		64%	Foster home*		34%
	Foster home**		56%	Other		33%
	Group home**		45%	Group home**		41%
	Kinship care		72%	Foster home**		37%
	Group home*		61%	Independent living		--
I think the things I have done in the past will help me in the future	Foster home*		67%	Foster home*		70%
	Foster home**		60%	Other		65%
	Group home**		47%	Group home**		57%
	Kinship care		78%	Foster home**		65%
	Group home*		52%	Independent living		--
Even when others want to quit, I know that I can find ways to solve problems	Foster home*		62%	Foster home*		63%
	Foster home**		53%	Other		55%
	Group home**		50%	Group home**		57%
	Kinship care		65%	Foster home**		62%
	Group home*		52%	Independent living		--
Average Hope score	Foster home*		13.3	Foster home*		13.2
	Foster home**		12.5	Other		12.3
	Group home**		10.8	Group home**		11.6
	Kinship care		13.8	Foster home**		12.8
	Group home*		11.3	Independent living		--
	Overall		12.6	Overall		12.6

Note: The Hope Scale is a six-item, four-point scale, reported by the young person. Items are as indicated in Table 5.5. Response choices are: Never, scored 0; Sometimes, scored 1; Often, scored 2; Always, scored 3. The possible range of scores is from 0 to 18, with a higher score indicating a greater level of hopefulness. These questions apply only to young people in the 10-17 age group.

* operated by a child welfare organization

** outside purchased care

Table 5.6: Percentage of young people who responded “Most of the time” or “Often” to Active Coping Scale items by placement setting and total Active Coping Scale score by placement setting and overall.

Age Group		CAS	ON		CAS	ON
		10-15	10-15		16-17	16-17
I do things to make my problem better	Foster home*		65%	Foster home*		63%
	Foster home**		52%	Other		56%
	Group home**		44%	Group home**		49%
	Kinship care		70%	Foster home**		60%
	Group home*		50%	Independent living		--
I think about different ways of solving my problem	Foster home*		59%	Foster home*		54%
	Foster home**		50%	Other		58%
	Group home**		41%	Group home**		47%
	Kinship care		64%	Foster home**		49%
	Group home*		49%	Independent living		--
I take action to improve the situation	Foster home*		55%	Foster home*		62%
	Foster home**		50%	Other		60%
	Group home**		41%	Group home**		51%
	Kinship care		65%	Foster home**		57%
	Group home*		42%	Independent living		--
I try to learn more about what is causing my problem	Foster home*		46%	Foster home*		44%
	Foster home**		38%	Other		46%
	Group home**		34%	Group home**		37%
	Kinship care		50%	Foster home**		48%
	Group home*		36%	Independent living		--
Total Active Coping score	Foster home*		7.2	Foster home*		7.3
	Foster home**		6.5	Other		7.2
	Group home**		5.9	Group home**		6.3
	Kinship care		7.8	Foster home**		6.7
	Group home*		6.3	Independent living		--
	Overall		6.8	Overall		7.0

Note: The Active Coping scale is a four-item, four-point scale, reported by the young person. Items are as indicated in Table 5.6. Response choices are: Never, scored 0; Sometimes, scored 1; Often, scored 2; Always, scored 3. The possible range of scores is from 0 to 12, with a higher score indicating a greater level of hopefulness. These questions are asked only of young people in the 10-17 age group.

* operated by a child welfare organization
 ** outside purchased care

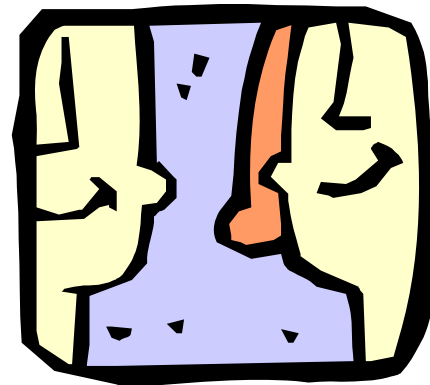


Table 5.7: Percentage of caregivers (or young people) who responded “Always” or “Often” with regard to indicators of the young person’s social presentation.

Age Group		CAS		ON	
		10-15	16-21	10-15	16-21
Social presentation	Keeps himself/herself clean			82%	88%
	Takes adequate care of his/her skin			78%	85%
	Personal appearance gives people the impressions that he/she takes care of himself/herself*			88%	88%
	Wears suitable clothes			92%	91%
	People can understand what he/she is saying			89%	91%
	Is polite with friends/adults			84%	84%
	Do you know how to adjust your behaviour and conversation appropriately to different situations? **			--	82%

*Asked only of 10 to 17 year olds

** Asked only of 18-21 year olds

Table 5.8: Percentage of caregivers who responded “Always” or “Often” with regard to indicators of the child’s social presentation.

Age Group		CAS			ON		
		0-2	3-4	5-9	0-2	3-4	5-9
Social presentation	Promptly changed when wet or dirty				98%	--	--
	Bathed daily				67%	--	--
	Skin and hair are cared for appropriately				100%	--	--
	Dressed appropriately				100%	100%	98%
	Appears well cared for				--	100%	100%
	Makes himself/herself understood by people outside the immediate family				--	61%	79%
	Says please, thank you, excuse me, etc.				--	77%	80%

*Asked only of 0-9 year olds



Table 5.9: Attachment to at least one caregiver by placement setting.

Age Group		CAS	ON			CAS		ON	
		0-4	0-4			5-9	10-15	5-9	10-15
Foster home*	Definitely attached		91%	Foster home*	Definitely attached			80%	75%
	Some attachment		8%		Some attachment			19%	22%
	Little or no attachment		1%		Little or no attachment			2%	3%
Foster home**	Definitely attached		88%	Foster home**	Definitely attached			78%	66%
	Some attachment		11%		Some attachment			19%	29%
	Little or no attachment		1%		Little or no attachment			3%	4%
Kinship care	Definitely attached		96%	Group home**	Definitely attached			48%	38%
	Some attachment		4%		Some attachment			46%	47%
	Little or no attachment		0%		Little or no attachment			7%	15%
Customary care	Definitely attached		91%	Kinship care	Definitely attached			91%	85%
	Some attachment		9%		Some attachment			8%	13%
	Little or no attachment		0%		Little or no attachment			2%	1%
Adoption probation	Definitely attached		100%	Group home*	Definitely attached			77%	40%
	Some attachment		0%		Some attachment			23%	37%
	Little or no attachment		0%		Little or no attachment			0%	22%

* operated by a child welfare organization

** outside purchased care

Table 5.10: Level of perceived mastery reported by young adults.

Age Group		CAS	ON
		18-21	18-21
Average perceived mastery score	Foster home*		--
	Other		15.7
	Group home**		--
	Foster home**		--
	Independent living		15.2
	Overall		15.4

Note: The Perceived Mastery scale is a seven-item, four-point scale, reported by the young adult. An example item is: "What happens to me in the future depends on me." Response choices are: Strongly disagree, scored 0; Disagree, scored 1; Agree, scored 2; Strongly agree, scored 3. Five of the seven items are reverse coded. The possible range of scores is from 0 to 21, with a higher score indicating a greater degree of mastery perceived by the young person. These questions are asked only of young people in the 18-21 age group.

* operated by a child welfare organization

** outside purchased care

Table 5.11: Strengths and Difficulties Questionnaire by placement setting and overall.

Age Group		CAS		ON			CAS	ON
		5-9	10-15	5-9	10-15		16-17	16-17
Pro-social Score	Foster home*			7.4	7.9	Foster home*		7.8
	Foster home**			7.0	7.5	Other		7.2
	Group home**			5.3	6.5	Group home**		6.4
	Kinship care			7.9	8.2	Foster home**		7.7
	Group home*			7.8	6.8	Independent living		--
	Overall			7.4	7.6	Overall		7.4
Emotional Symptoms Score	Foster home*			2.2	2.6	Foster home*		2.5
	Foster home**			2.3	2.6	Other		2.8
	Group home**			3.2	3.7	Group home**		3.4
	Kinship care			2.0	2.5	Foster home**		2.7
	Group home*			2.1	3.6	Independent living		--
	Overall			2.3	2.8	Overall		2.8
Hyperactivity Score	Foster home*			5.9	4.9	Foster home*		4.1
	Foster home**			6.1	5.3	Other		4.4
	Group home**			7.3	6.3	Group home**		5.2
	Kinship care			4.9	4.2	Foster home**		4.3
	Group home*			3.8	4.2	Independent living		--
	Overall			5.8	5.2	Overall		4.4
Conduct Problems Score	Foster home*			2.9	2.4	Foster home*		2.2
	Foster home**			3.2	2.9	Other		2.8
	Group home**			3.8	3.8	Group home**		3.6
	Kinship care			1.9	1.9	Foster home**		2.4
	Group home*			2.5	2.9	Independent living		--
	Overall			2.9	2.8	Overall		2.7
Peer Relation Problems Score	Foster home*			2.3	2.3	Foster home*		2.2
	Foster home**			2.6	2.8	Other		1.9
	Group home**			4.2	3.4	Group home**		3.5
	Kinship care			1.8	1.7	Foster home**		2.6
	Group home*			2.0	3.6	Independent living		--
	Overall			2.4	2.6	Overall		2.5
Total Difficulties Score	Foster home*			13.3	12.1	Foster home*		10.9
	Foster home**			14.3	13.5	Other		11.9
	Group home**			18.4	17.4	Group home**		15.8
	Kinship care			10.5	10.4	Foster home**		11.9
	Group home*			10.3	16.2	Independent living		--
	Overall			13.3	13.3	Overall		12.3

Note: The Pro-social scale is a five-item, three-point scale, reported by the caregiver. A sample item is: "Shares readily with other youth, for example books, games, food." Response choices are: Not true, scored 0; Somewhat true, scored 1; True, scored 2. The possible range of scores is from 0 to 10, with a higher score indicating a greater amount of pro-social behaviours.

The Emotional Symptoms scale is a five-item, three-point scale reported by the caregiver. A sample item is: "Often unhappy, depressed, or tearful." Response choices are: Not true, scored 0; Somewhat true, scored 1; True, scored 2. The possible range of scores is from 0 to 10, with a higher score indicating a greater amount of emotional symptoms.

The Hyperactivity scale is a five-item, three-point scale reported by the caregiver. A sample item is: "Easily distracted, concentration wanders." Response choices are: Not true, scored 0; Somewhat true, scored 1; True, scored 2. Two items are reverse coded. The possible range of scores is from 0 to 10, with a higher score indicating a greater degree of hyperactivity.

The Conduct Problems scale is a five-item, three-point scale reported by the caregiver. A sample item is: "Often loses temper." Response choices are: Not true, scored 0; Somewhat true, scored 1; True, scored 2. The possible range of scores is from 0 to 10, with a higher score indicating a greater number of behaviours associated with conduct problems.

The Peer Relation Problems scale is a five-item, three-point scale reported by the caregiver. A sample item is: "Would rather be alone than with other youth." Response choices are: Not true, scored 0; Somewhat true, scored 1; True, scored 2. Two items are reverse coded. The possible range of scores is from 0 to 10, with a higher score indicating a greater level of problems with peers.

The Total Difficulties score is a twenty-item, three-point scale, constructed by adding together the items from the Emotional Symptoms scale, the Hyperactivity scale, the Conduct Problems scale, and the Peer Relation Problems scale. The possible range of scores is from 0 to 40, with a higher score indicating a greater level of overall difficulties.

Internal Assets

The Search Institute has identified the following twenty internal assets as building blocks that help young people grow up healthy, caring, and responsible. Internal assets fall under the following categories: Commitment to Learning, Positive Values, Social Competencies, and Positive Identity. Together with the External Assets (page 16), these make up a young person’s Asset Profile (below).

Table 5.12: Average internal assets by placement setting and overall.

Age Group		CAS		ON			CAS	ON
		5-9	10-15	5-9	10-15		16-21	16-21
Average number of internal assets (Possible range of scores: 1-20)	Foster home*			13.6	13.7	Foster home*		13.5
	Foster home**			12.4	12.4	Other		11.8
	Group home**			8.7	9.8	Group home**		9.7
	Kinship care			14.5	14.5	Foster home**		12.9
	Group home*			13.7	10.8	Independent living		14.1
	Overall			13.3	12.7	Overall		12.3

* operated by a child welfare organization

** outside purchased care

Asset Profile

Table 5.13: Asset Profile by placement setting and overall.

Age Group		CAS		ON			CAS	ON
		5-9	10-15	5-9	10-15		16-21	16-21
Asset profile	Foster home*			28.2	27.1	Foster home*		26.7
	Foster home**			27.0	25.6	Other		21.0
	Group home**			22.9	21.1	Group home**		20.1
	Kinship care			29.0	27.7	Foster home**		25.7
	Group home*			28.2	22.0	Independent living		25.0
	Overall			27.8	25.7	Overall		23.9

Note: Possible range of scores for 5-9 age group is 1-36. Possible range for 10-21 age group is 1-40.

* operated by a child welfare organization

** outside purchased care

