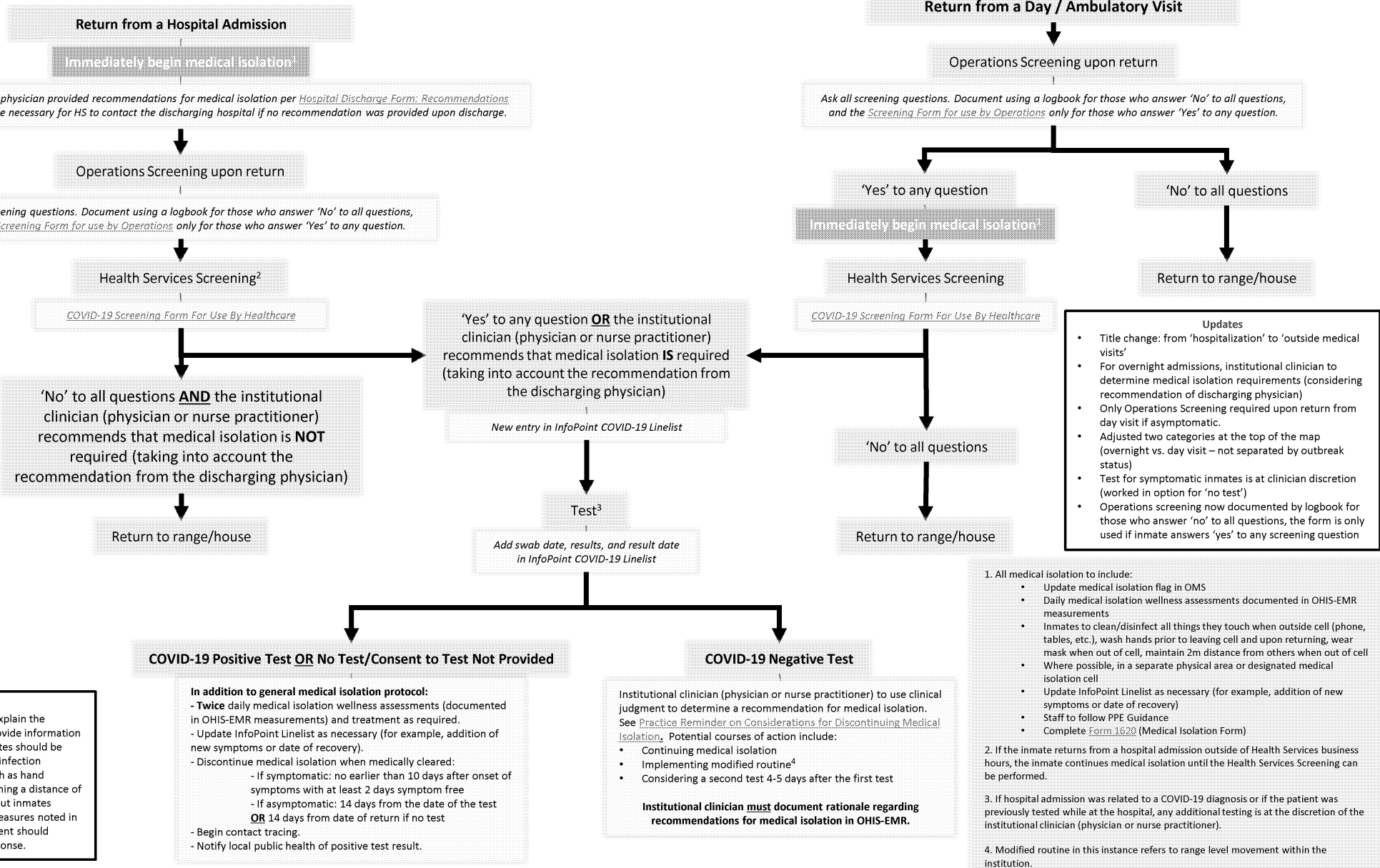


Patient Journey: COVID-19 Return from Outside Medical Visits

August 21, 2020
 (previous version June 23, 2020)



Notes
 Staff should engage with inmates to explain the rationale for medical isolation and provide information about the associated protocols. Inmates should be educated on the importance of other infection prevention and control measures, such as hand hygiene, wearing a mask, and maintaining a distance of 2m from others. If concerns arise about inmates following any of the recommended measures noted in this algorithm, institutional management should discuss to determine appropriate response.

Updates

- Title change: from 'hospitalization' to 'outside medical visits'
- For overnight admissions, institutional clinician to determine medical isolation requirements (considering recommendation of discharging physician)
- Only Operations Screening required upon return from day visit if asymptomatic.
- Adjusted two categories at the top of the map (overnight vs. day visit – not separated by outbreak status)
- Test for symptomatic inmates is at clinician discretion (worked in option for 'no test')
- Operations screening now documented by logbook for those who answer 'no' to all questions, the form is only used if inmate answers 'yes' to any screening question

- All medical isolation to include:
 - Update medical isolation flag in OMS
 - Daily medical isolation wellness assessments documented in OHIS-EMR measurements
 - Inmates to clean/disinfect all things they touch when outside cell (phone, tables, etc.), wash hands prior to leaving cell and upon returning, wear mask when out of cell, maintain 2m distance from others when out of cell
 - Where possible, in a separate physical area or designated medical isolation cell
 - Update InfoPoint Linelist as necessary (for example, addition of new symptoms or date of recovery)
 - Staff to follow PPE Guidance
 - Complete Form 1620 (Medical Isolation Form)
- If the inmate returns from a hospital admission outside of Health Services business hours, the inmate continues medical isolation until the Health Services Screening can be performed.
- If hospital admission was related to a COVID-19 diagnosis or if the patient was previously tested while at the hospital, any additional testing is at the discretion of the institutional clinician (physician or nurse practitioner).
- Modified routine in this instance refers to range level movement within the institution.