

Supplemental Material 2

Figure 1b.

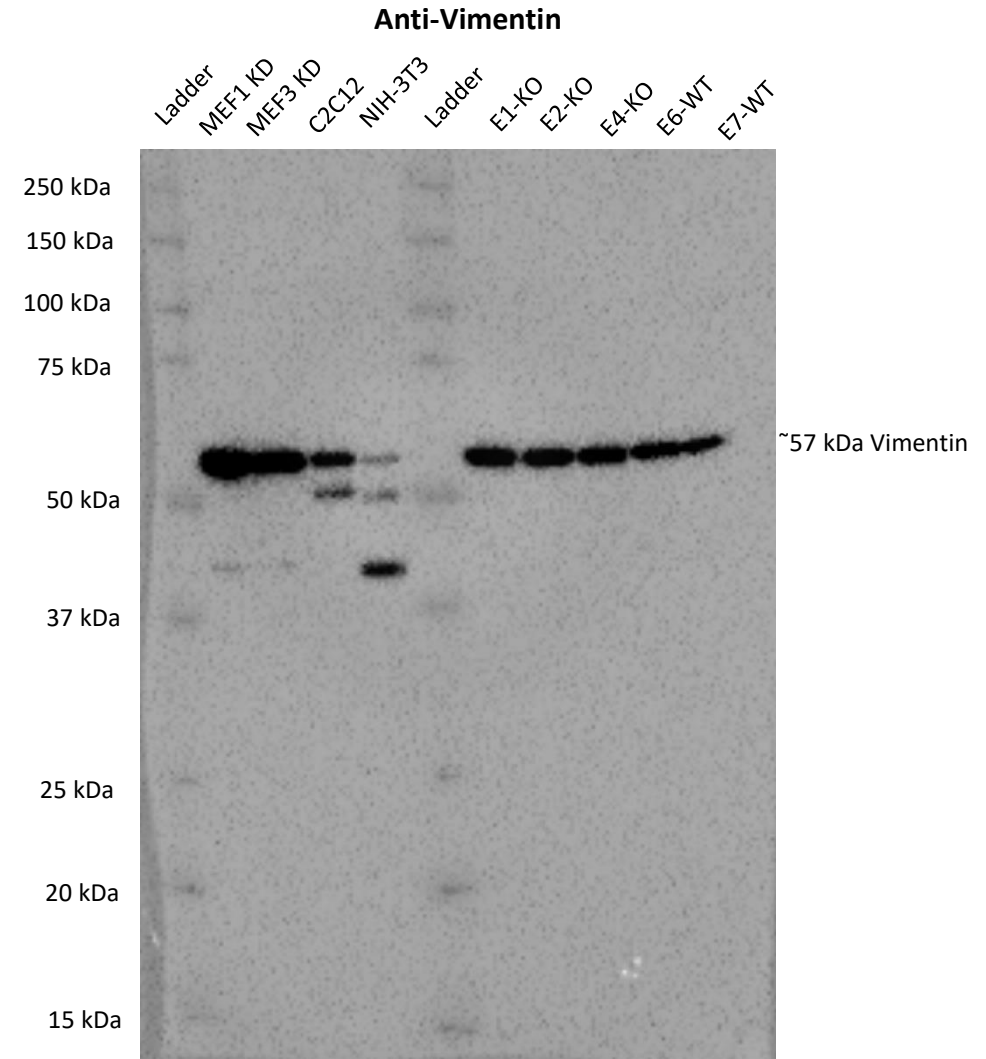
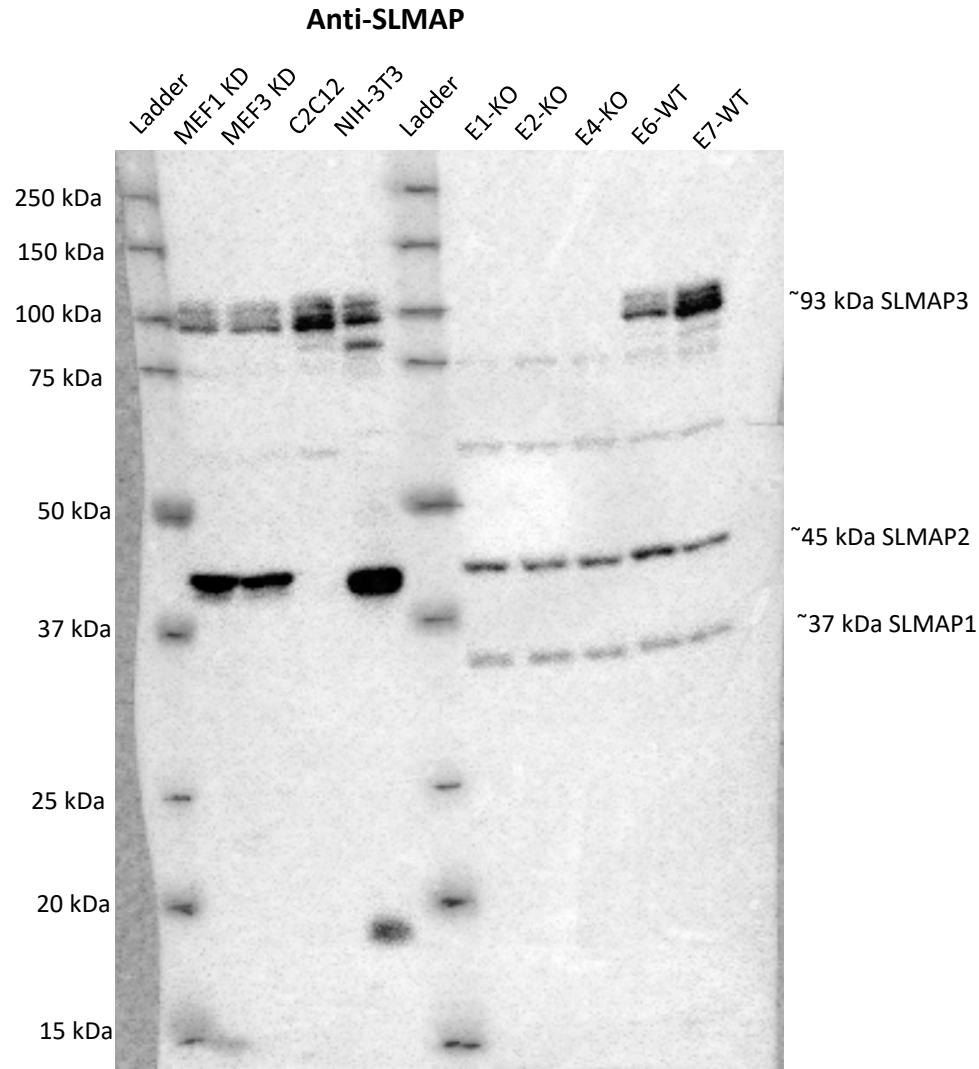
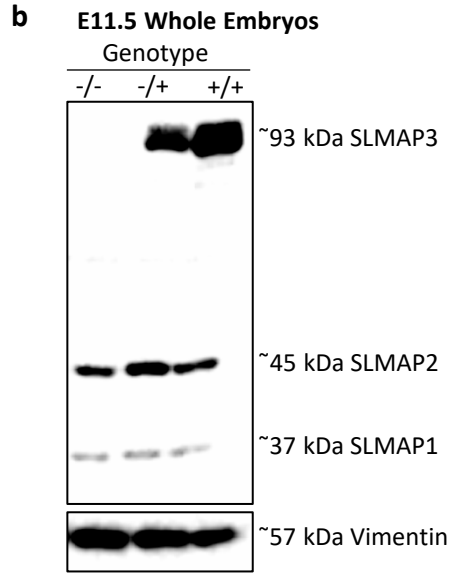
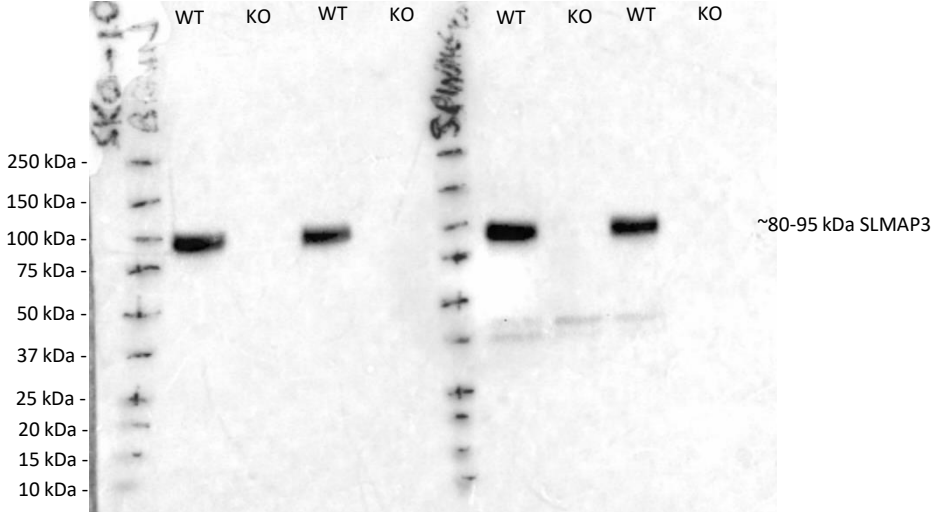
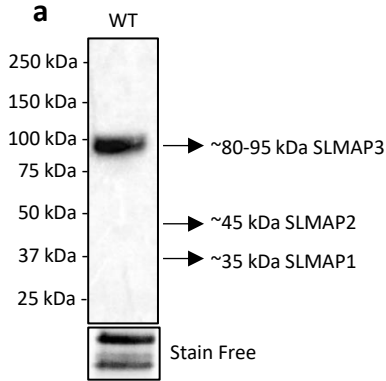


Figure 2a.

Anti-SLMAP



Stain Free - Membrane

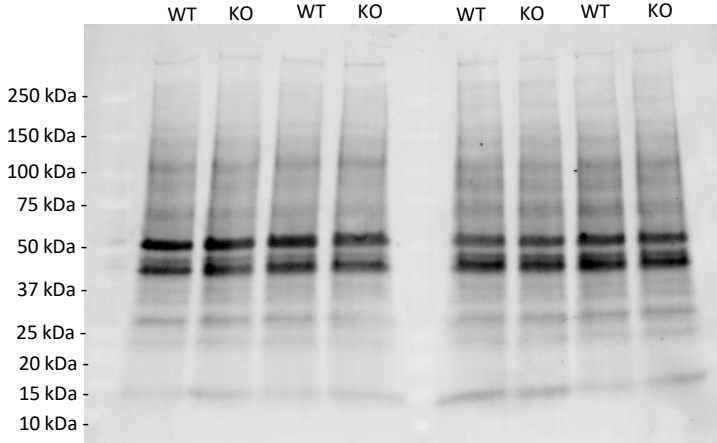
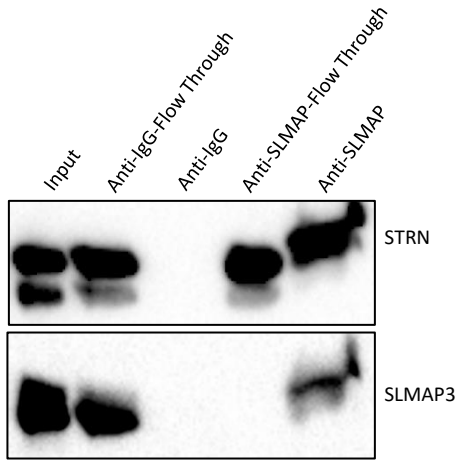


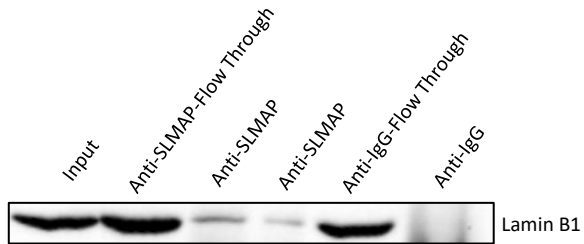
Figure 2b.

b

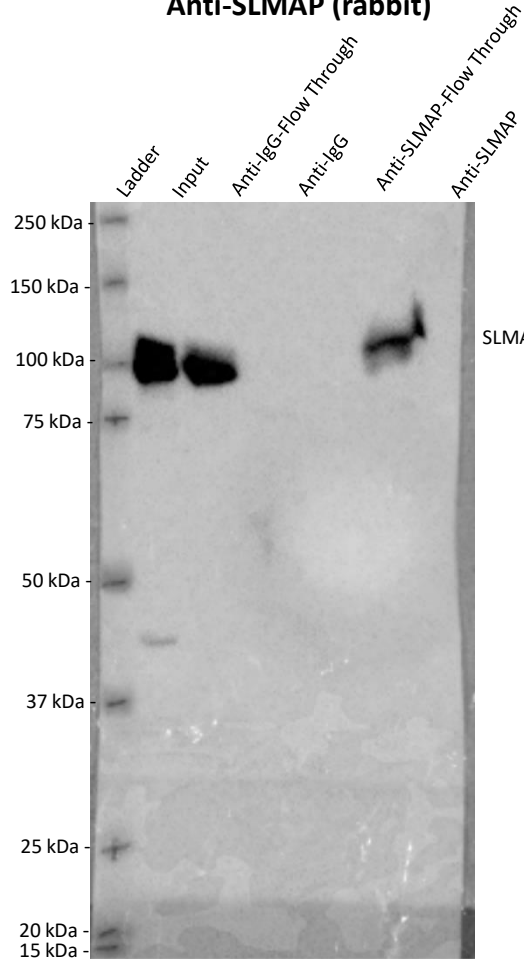
E12.5 Immunoprecipitation



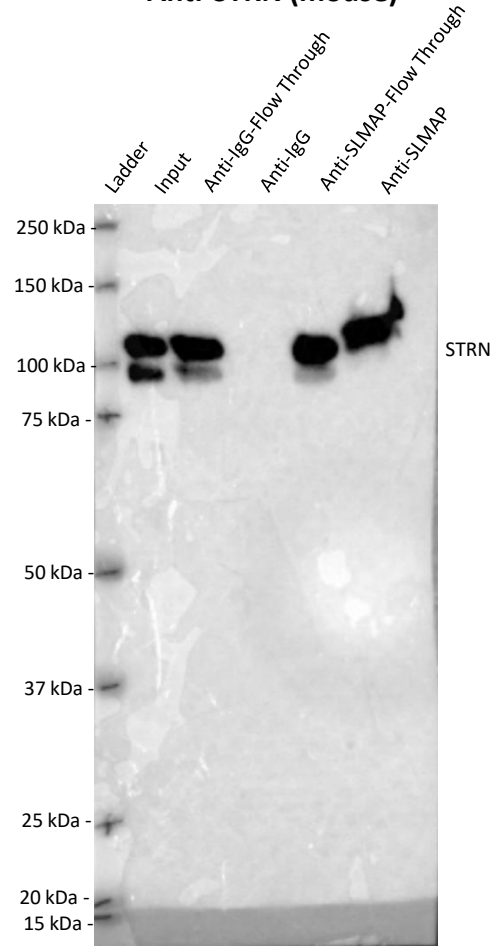
E12.5 Immunoprecipitation



Anti-SLMAP (rabbit)



Anti-STRN (mouse)



Lamin B1 (mouse)

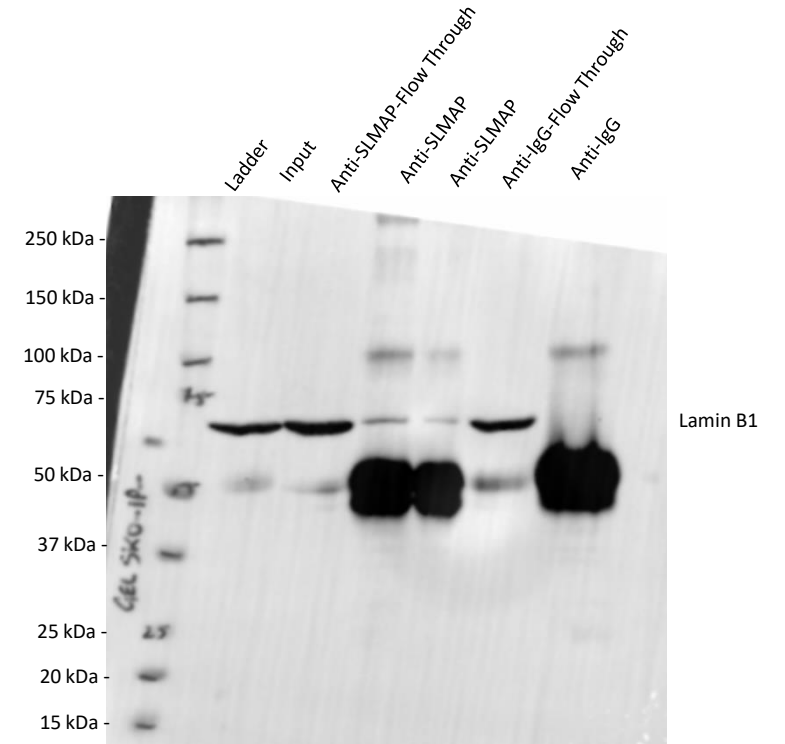


Figure 3d.

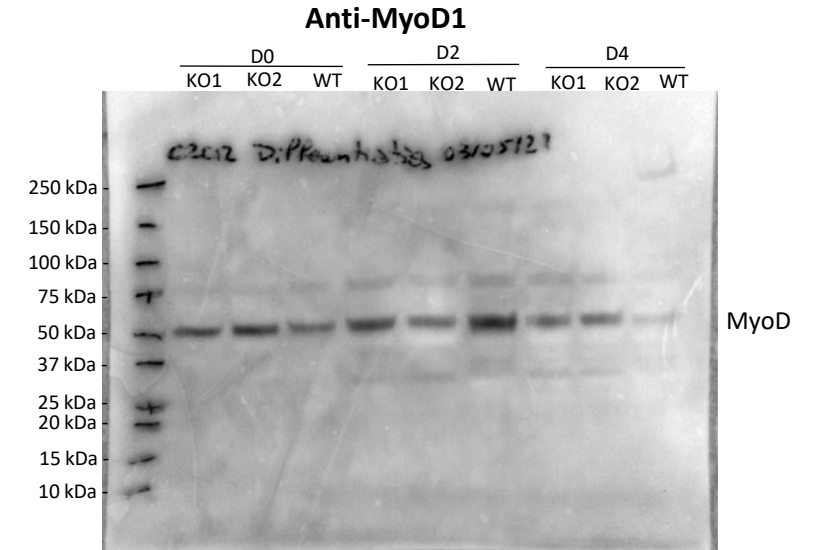
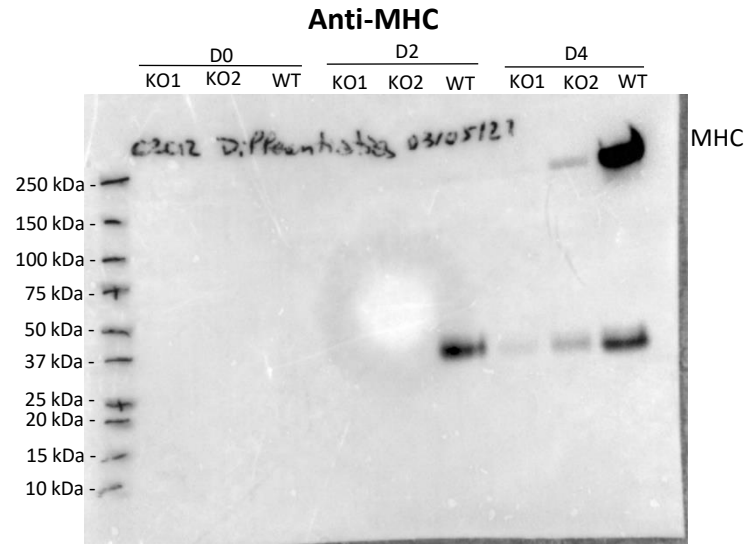
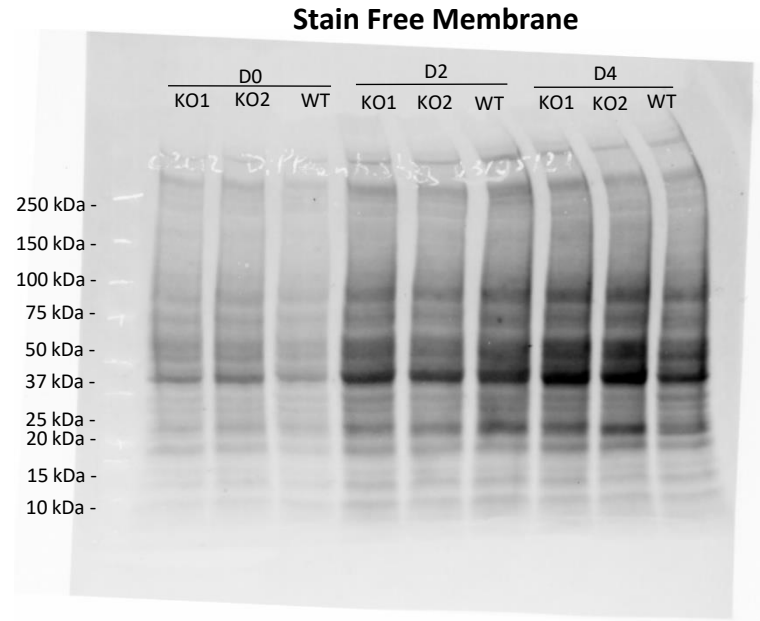
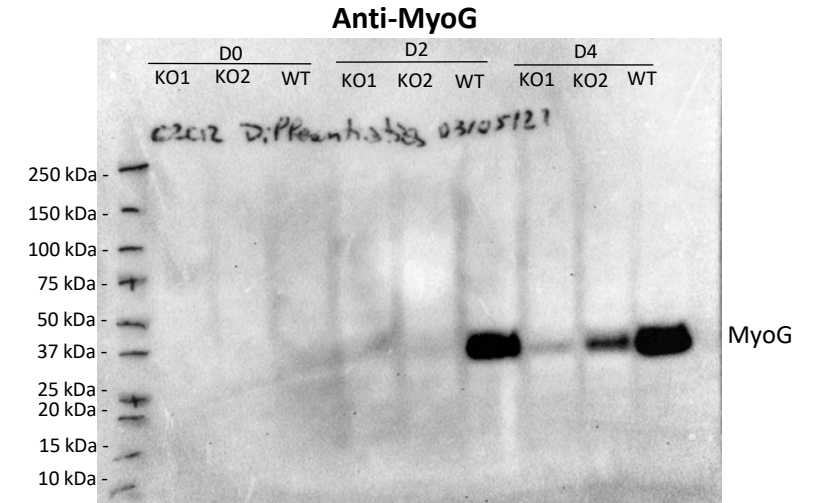
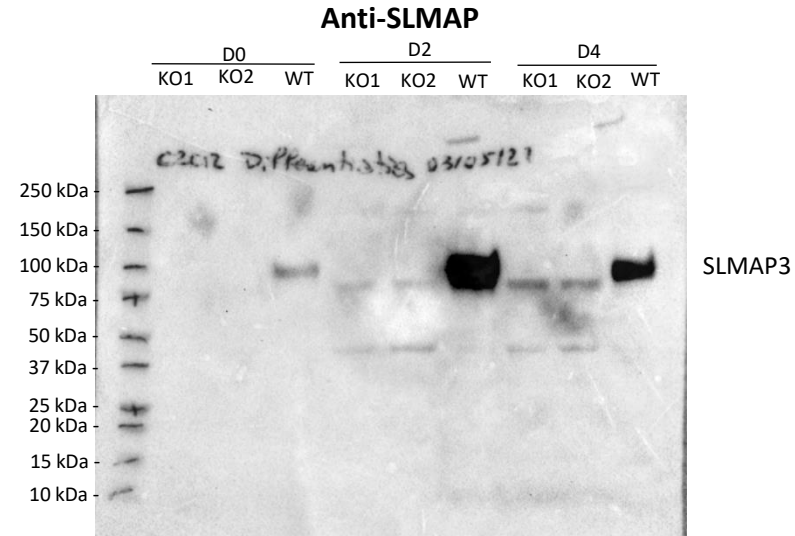
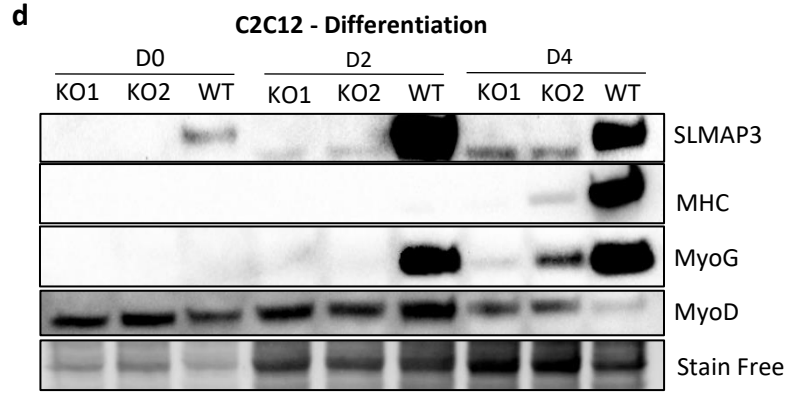


Figure 3f.

f C2C12 - STRN3 knockdown

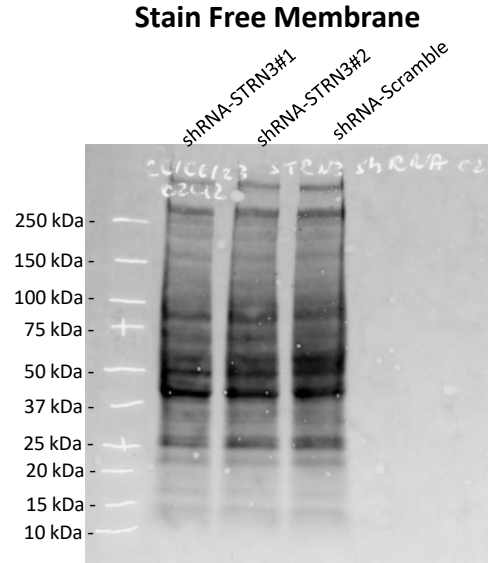
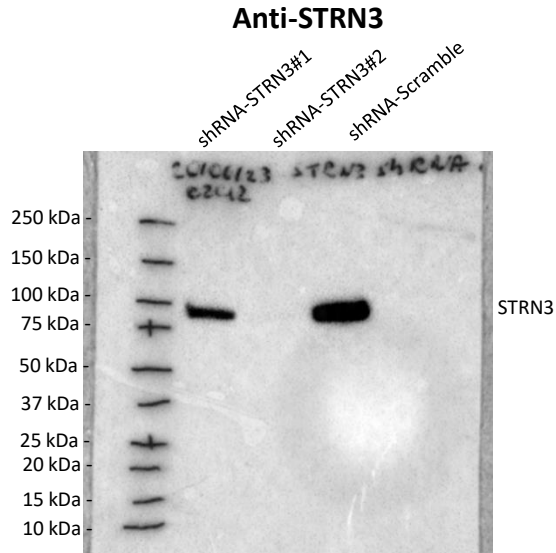
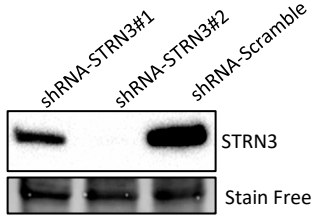


Figure 3g.

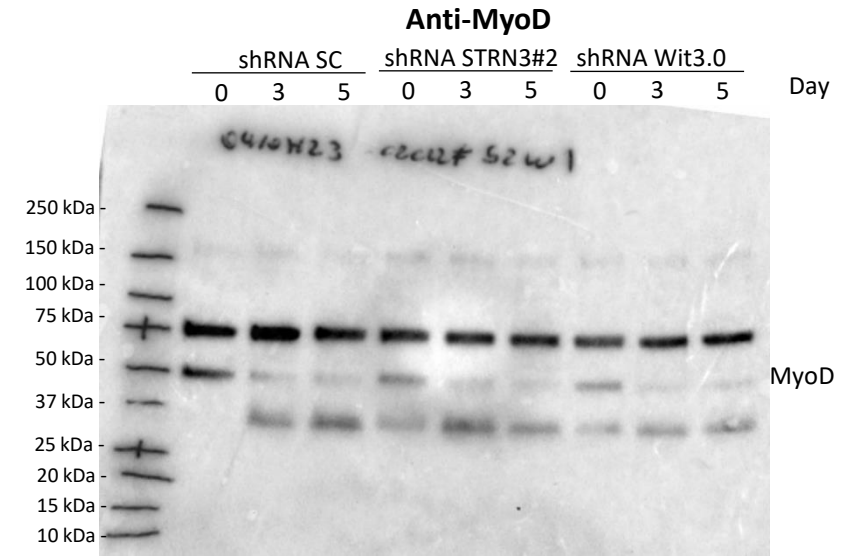
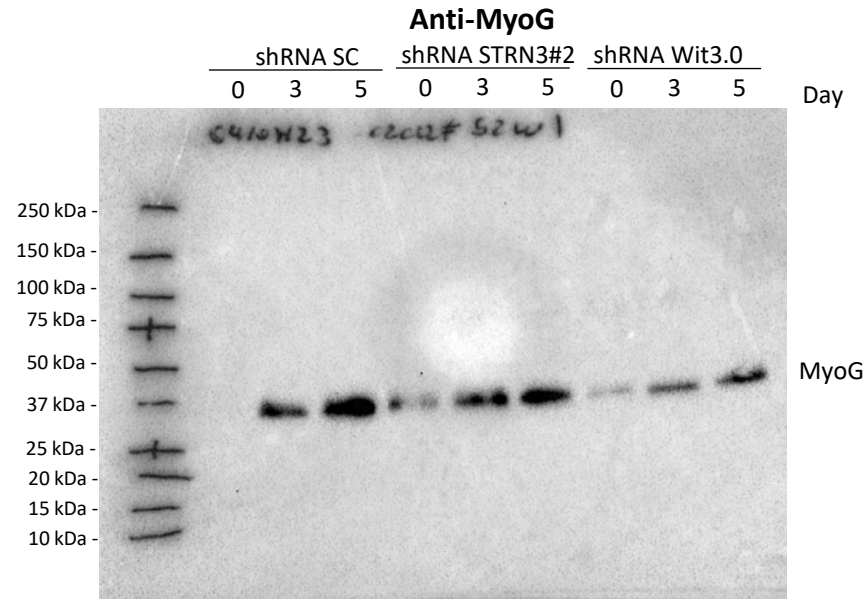
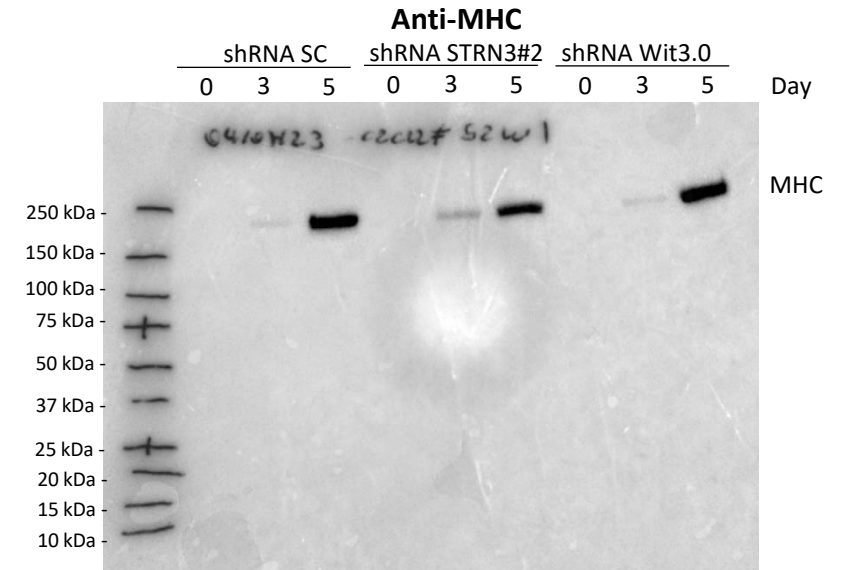
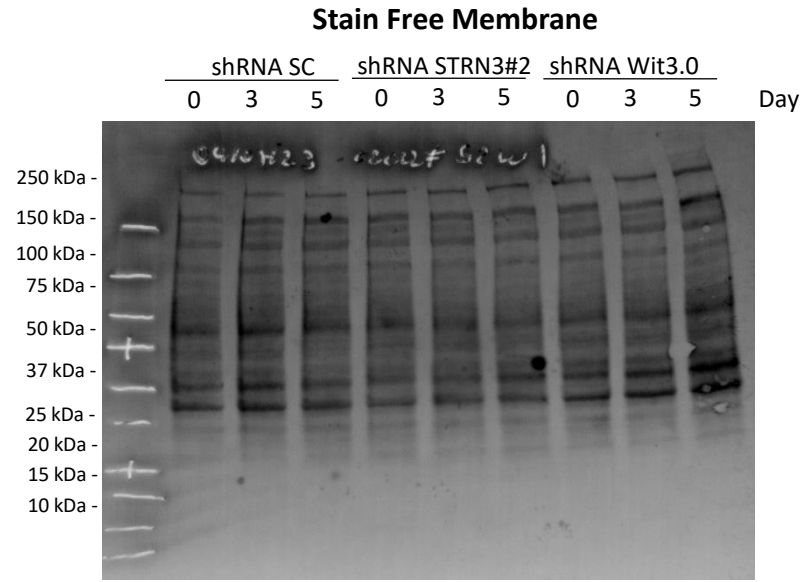
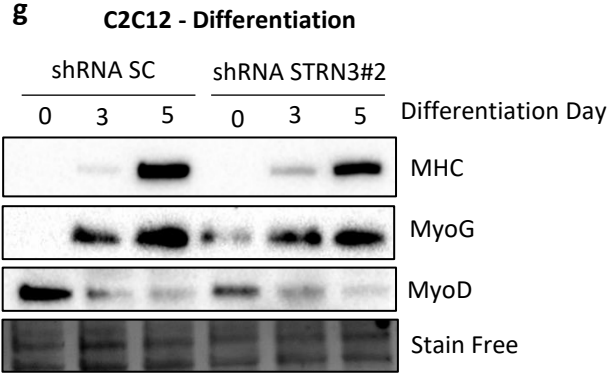
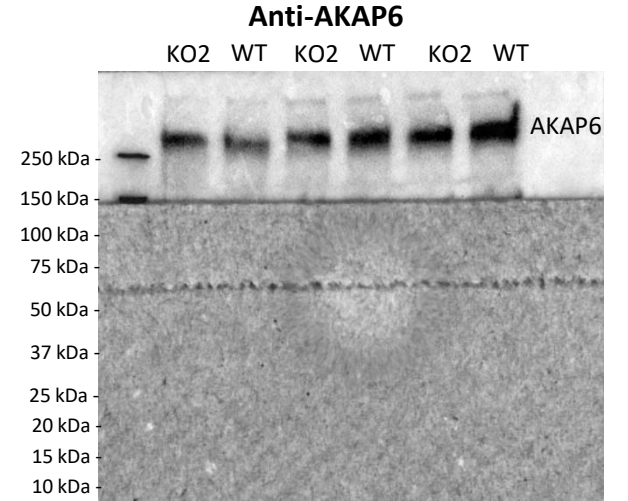
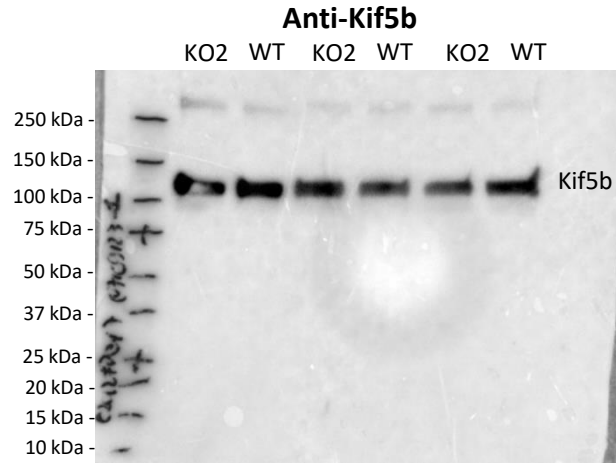
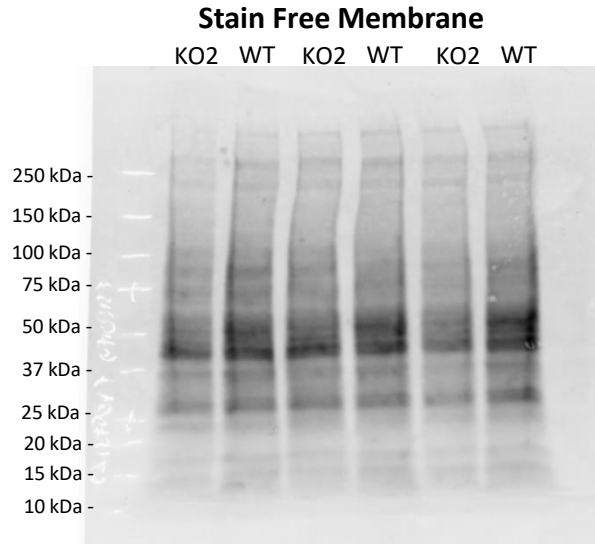
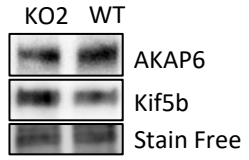


Figure 4e.

e C2C12 Differentiation Day 8



Note: this blot was covered under 150 kDa because anti-Kif5b was previously probed on it and it had a very strong signal that could mask the AKAP6 bands.

C2C12 Differentiation Day 8

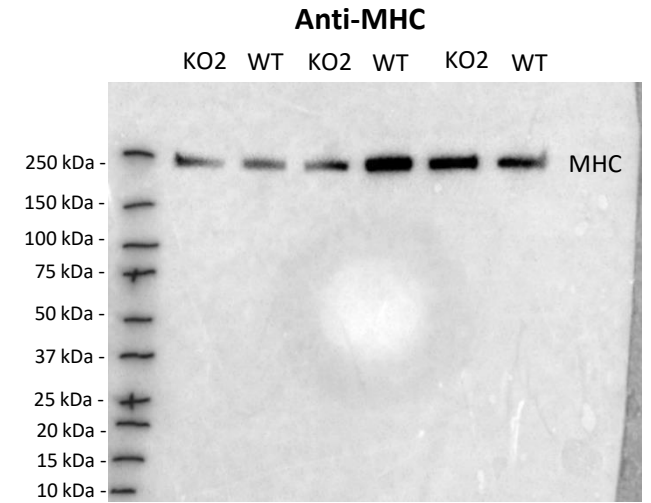
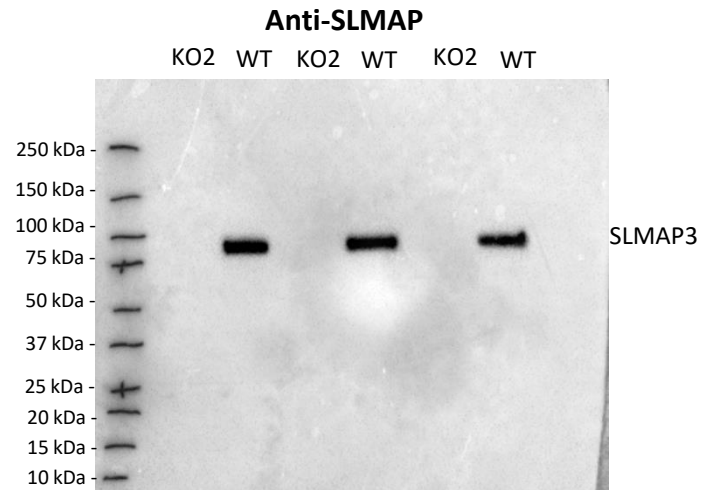
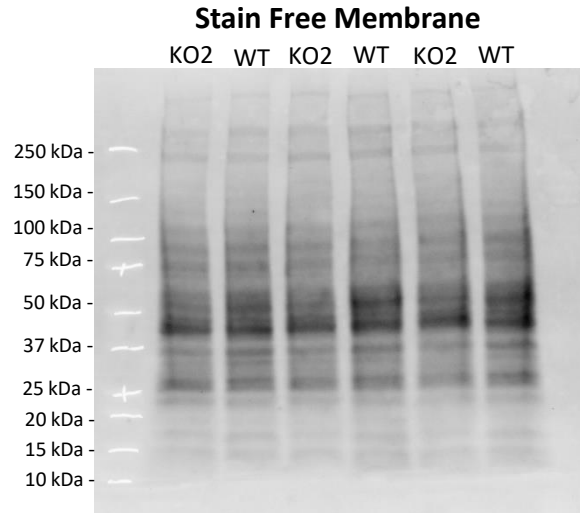
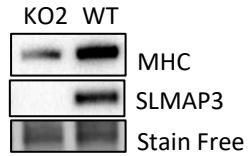
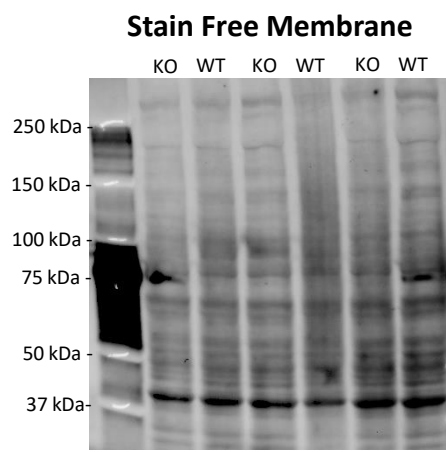
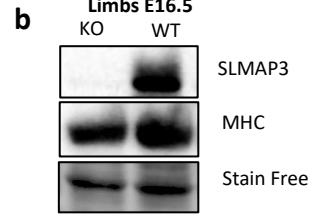


Figure 6b.



Note: this is the same blot as in Figure 8b

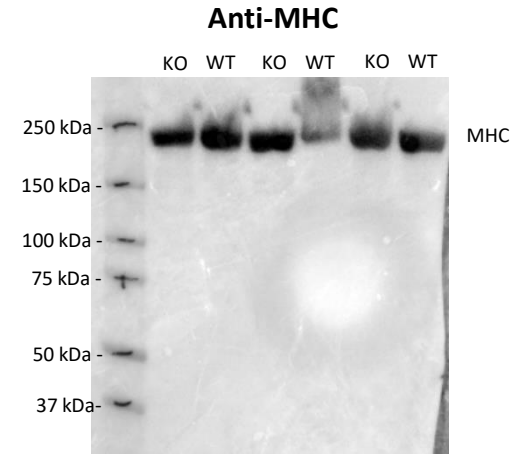
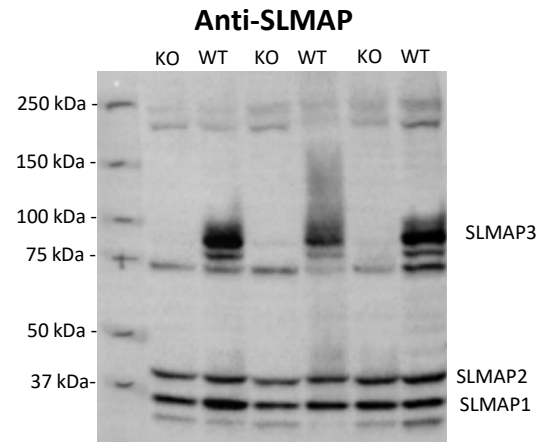


Figure 6d.

d E16.5 Limbs

	KO	WT
	+	+
	+	+
	+	+
	+	+

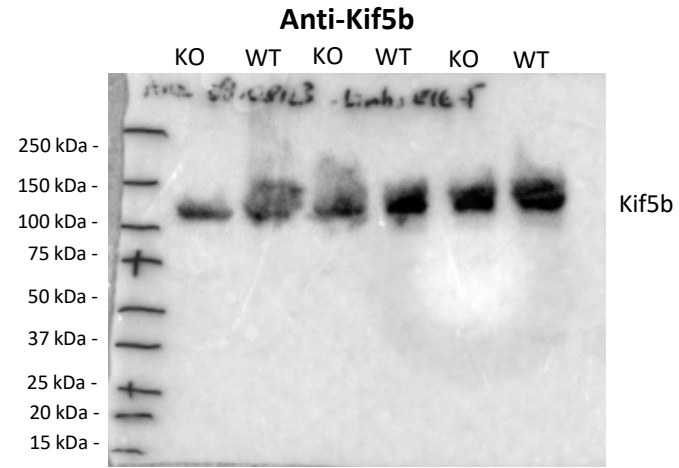
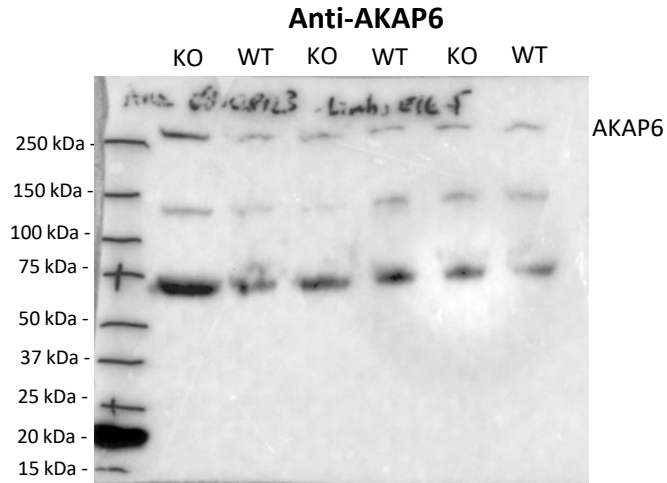
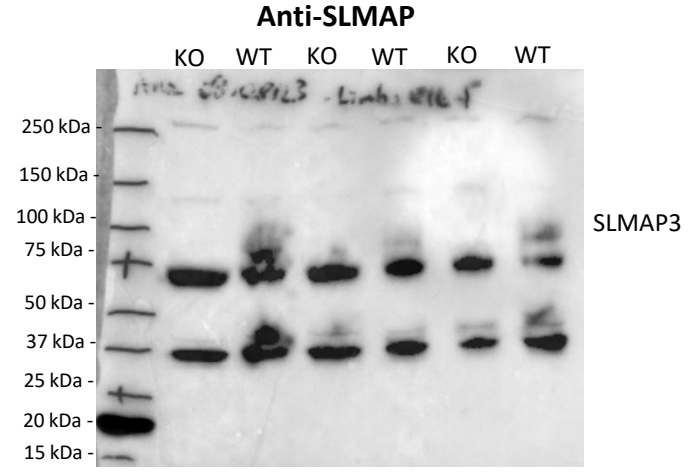
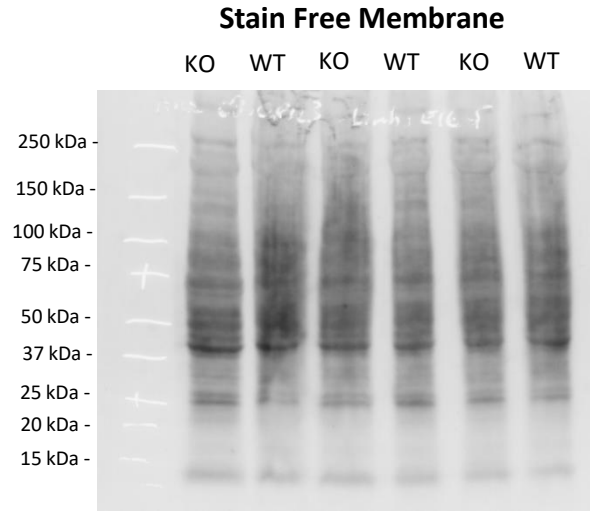
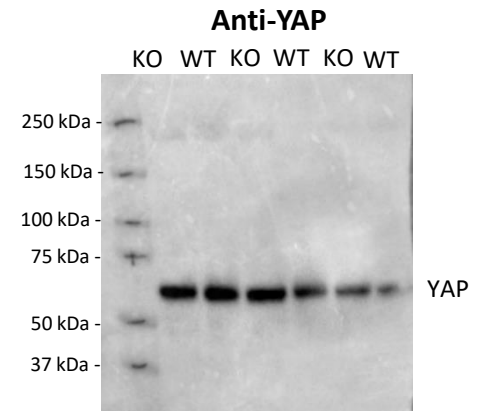
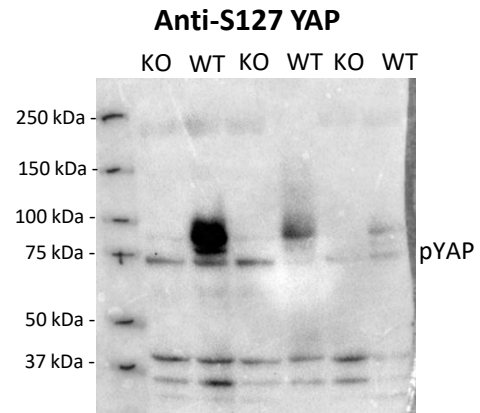
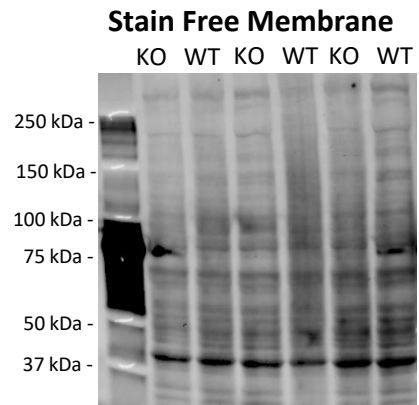


Figure 8b.

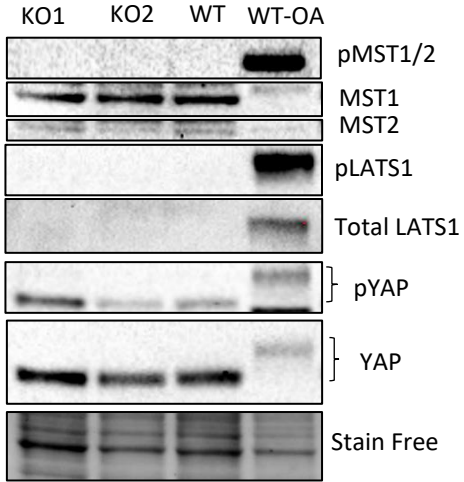
b E16.5 – Hind Limbs



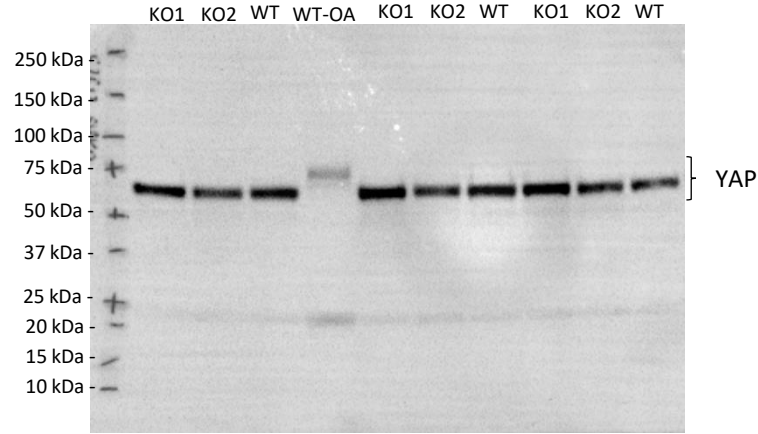
Note: this is the same blot as in Figure 6b

Figure 8c.

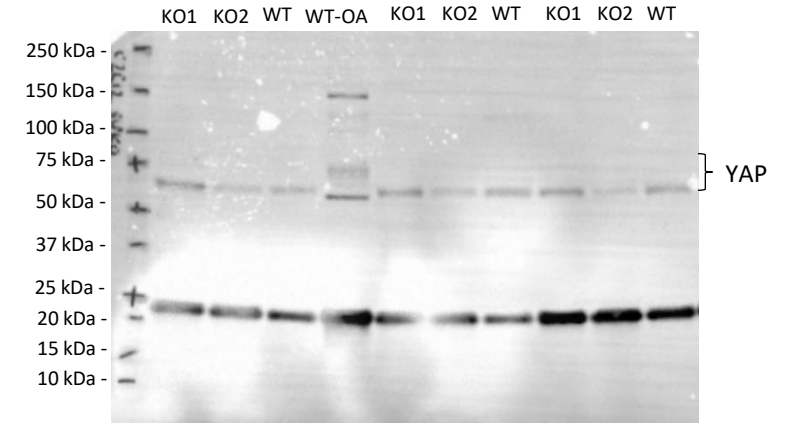
c C2C12 – Hippo Pathway



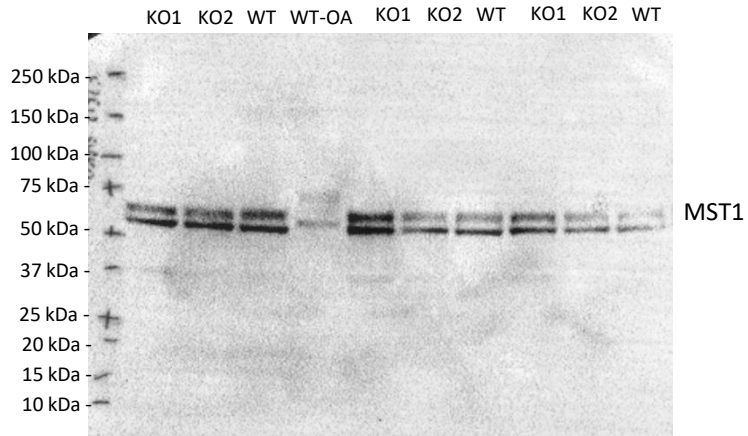
Anti-YAP



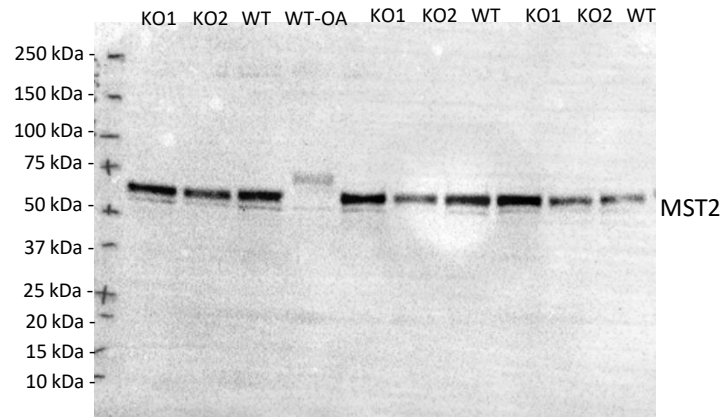
Anti-pYAP



Anti-MST1



Anti-MST2



Anti-pMST1/2

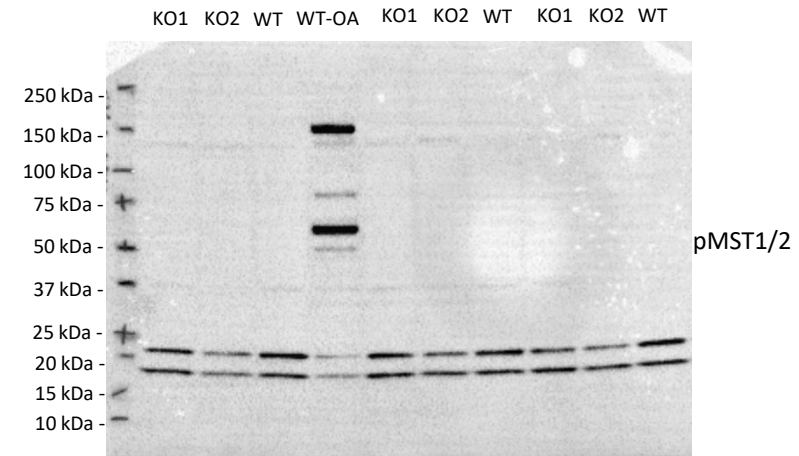
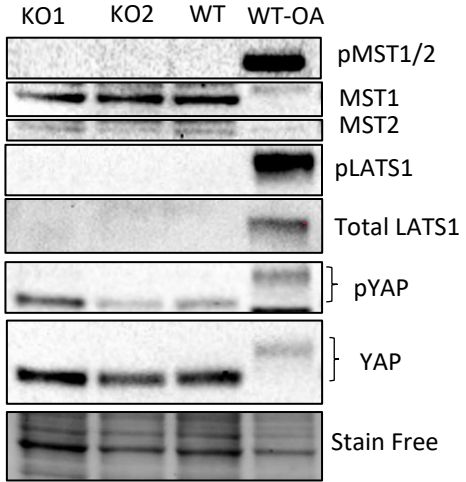
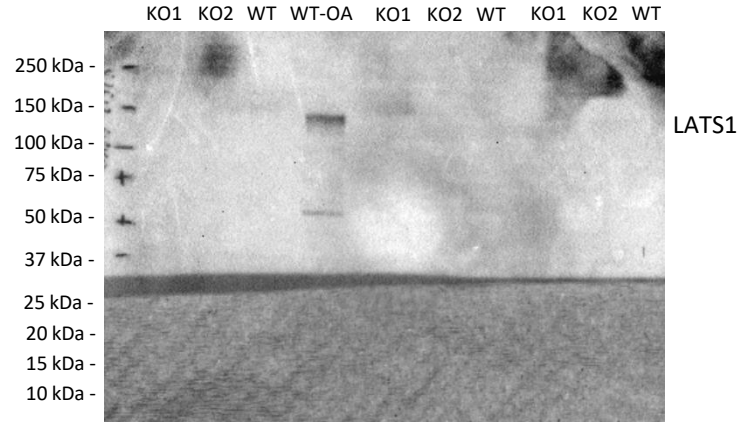


Figure 8c.

c C2C12 – Hippo Pathway

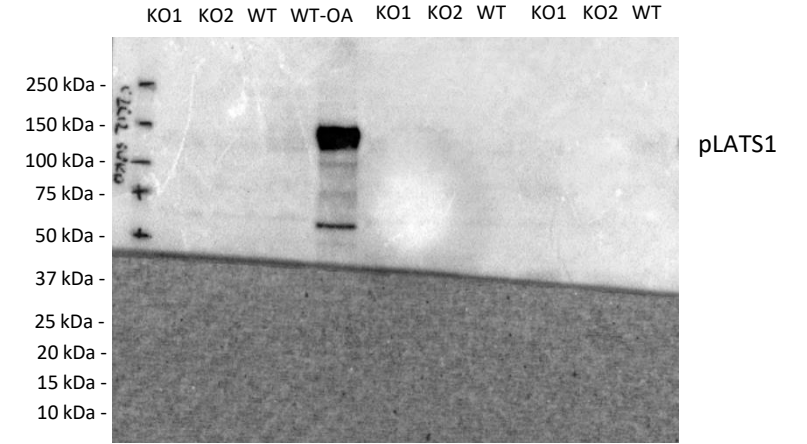


Anti-LATS1



Note: this blot was covered to avoid the staining from previous antibodies.

Anti-pLATS1



Note: this blot was covered to avoid the staining from previous antibodies.

Stain Free Membrane

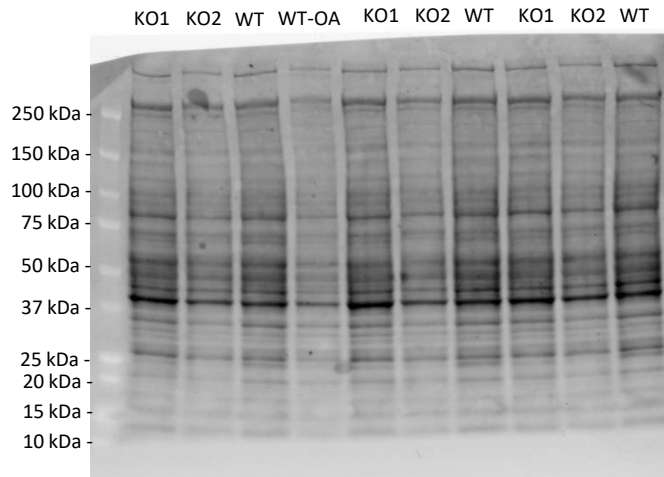
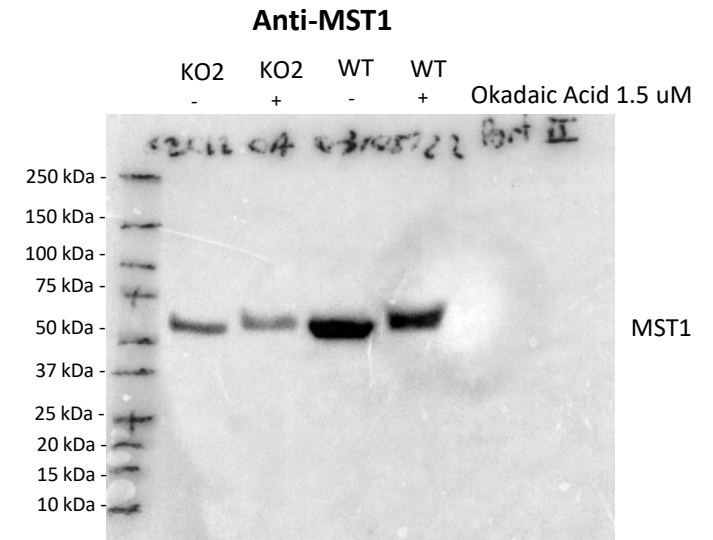
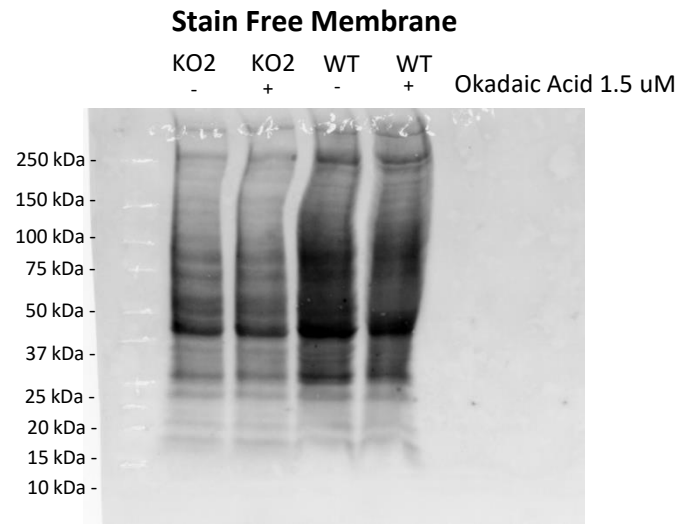
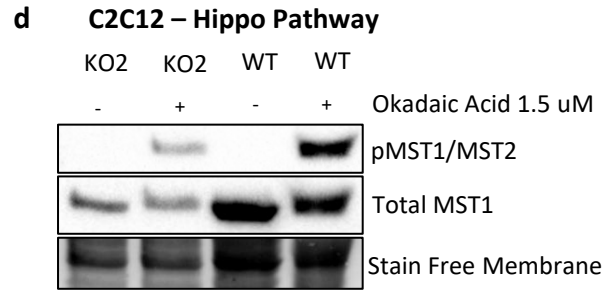


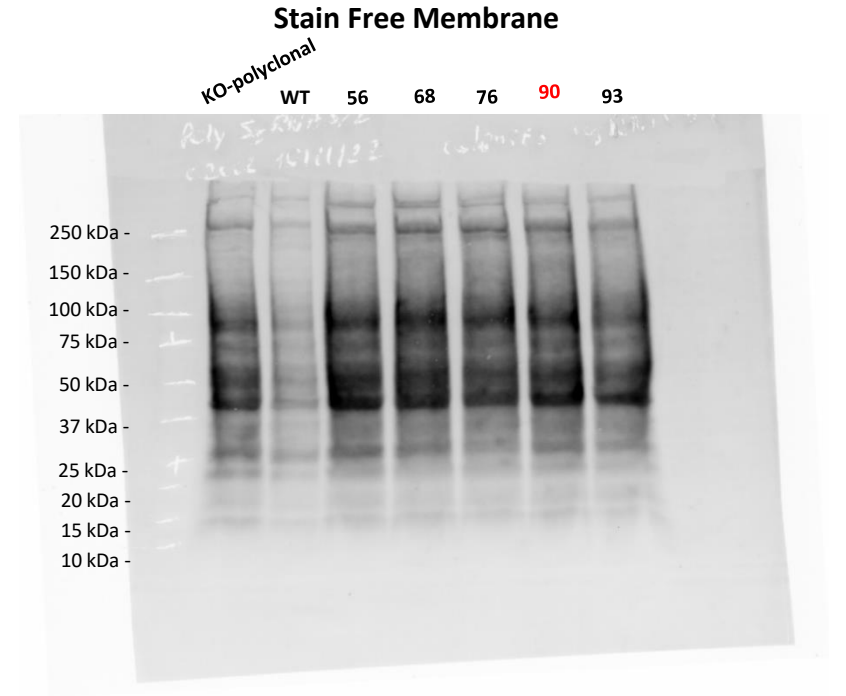
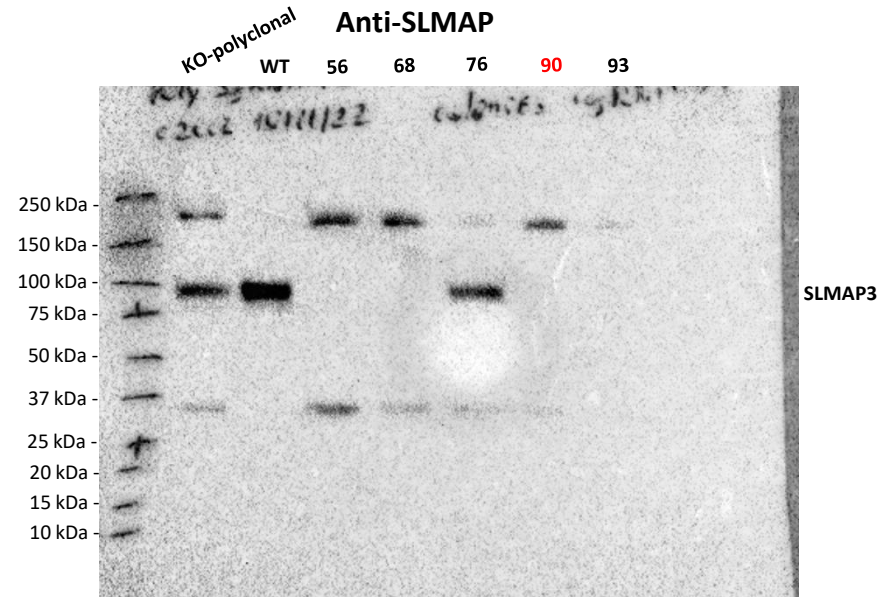
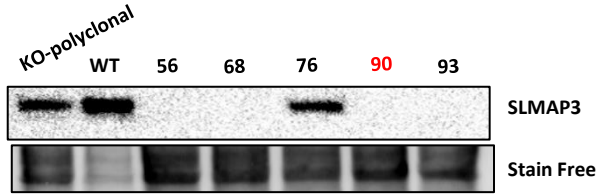
Figure 8d.



Supplementary Document

Figure S2B.

C2C12 – sgRNA3/1 Screening



C2C12 – sgRNA3/2 Screening

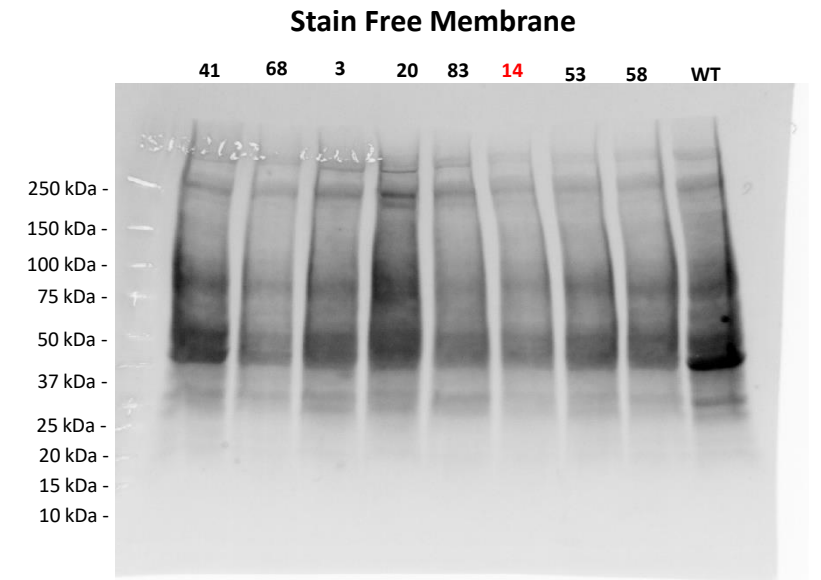
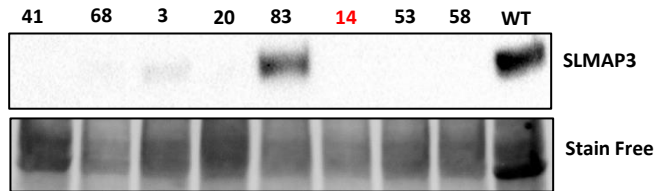


Figure S3D.

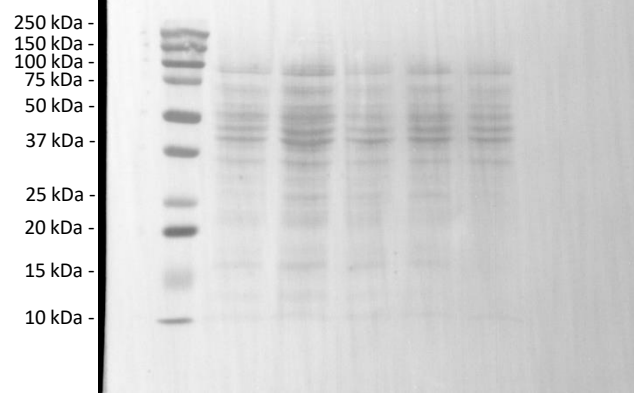
C2C12 colonies

KO1-45
KO1-56
KO2-41
KO2-53
WT



Ponceau Red

KO1-45
KO1-56
KO2-41
KO2-53
WT



KO1-45
KO1-56
KO2-41
KO2-53
WT

