

LOOKING AFTER CHILDREN In Ontario: Good Parenting, Good Outcomes

ONTARIO PROVINCIAL REPORT (YEAR SEVEN)

Prepared by:

Meagan Miller, OnLAC Research Coordinator

Cynthia Vincent, OnLAC Research Associate

Robert Flynn, OnLAC Principal Investigator

Centre for Research on Educational and Community Services,
University of Ottawa

June, 2010



The collaboration and financial support of the Ontario Ministry of Children and Youth Services and the Ontario Association of Children's Aid Societies are gratefully acknowledged.

Preface

This report is designed for use by child welfare organizations as a performance measurement system. The AAR outcome data available in this report should assist child welfare organizations in the development of an internal evaluation program. The AAR findings are intended to help supervisors, program managers, executive directors and board members within child welfare organizations monitor children's outcomes on a regular basis (quarterly or annually) by comparing children's and youths' developmental progress with intended goals. A second intended use of the AAR is to inform decision-makers as to possible means of improving the quality and relevance of services on an ongoing basis.

***Note:** The AAR findings presented in this report must be reviewed and interpreted carefully by child welfare organizations before new policies and services are implemented.*

This report is also designed to provide policy-makers with accurate, up-to-date knowledge of system-wide outcomes thereby fulfilling an accountability function and a guiding function in identifying policies and practices that promote continuous improvements in child welfare policies and practices.

The acronym 'CAS' appearing in the report represents the data for the specific child welfare organization for which the report was prepared. 'ON' represents the Ontario sample.

A double hyphen (- -) in this report indicates that there was no data collected on a specific variable for a specific group. Clarification is noted, where possible. Percentages were rounded.

Individual agency reports were generated for datasets with 20 or more young people.

Background Information

The Background Information section of this report provides basic socio-demographic information on the young people in care who completed a Year Seven Assessment and Action Record (AAR), their caregivers, and their child welfare workers.

Who are the young people living in care?

Table 1.1: Gender and age of young people who completed a Year Seven AAR, and language of the AAR conversation.

Age Group Sample Size		CAS				ON			
		0-4 N =	5-9 N =	10-15 N =	16-21 N =	0-4 N = 603	5-9 N = 884	10-15 N = 2498	16-21 N = 1140
Gender	Male					55%	56%	58%	50%
	Female					45%	44%	42%	50%
Age	Mean					2.2	7.4	12.9	16.9
	Median					2.4	8.0	13.0	17.0
Language	English					98%	99%	97%	96%
	French					2%	1%	3%	4%
	First Nations					0%	0%	0%	0%
	Other					0.2%	0%	0.2%	0%

Table 1.2: Percentage of young people who completed a Year Seven AAR by legal status.

Age Group		CAS				ON			
		0-4	5-9	10-15	16-21	0-4	5-9	10-15	16-21
Legal status	Crown Ward, with access					6%	42%	68%	70%
	Crown Ward, no access					33%	27%	15%	7%
	Society Ward					25%	15%	10%	5%
	Temporary care agreement					3%	1%	1%	0.1%
	Interim care and custody					29%	13%	5%	1%
	Extended care and maintenance					--	--	--	15%
	Other					4%	2%	0.4%	2%

In what settings do the young people live?

Table 1.3: Percentage of young people in Ontario in different placement settings.

Age Group		CAS				ON			
		0-4	5-9	10-15	16-21	0-4	5-9	10-15	16-21
Placement setting	Foster home*					79%	63%	53%	31%
	Foster home**					12%	20%	19%	11%
	Group home**					1%	4%	16%	18%
	Kinship care					6%	11%	7%	5%
	Group home*					0%	1%	2%	2%
	Children's mental health residential facility					0%	0.6%	2%	1%
	Regular hospital (short-term)					0%	0%	0%	0%
	Customary care					2%	0.8%	0.3%	0%
	Custody/Detention facility					0%	0%	0.3%	2%
	With birth parents					0%	0%	0.2%	1%
	With relatives (not in care)					0%	0%	0.1%	3%
	Psychiatric facility					0%	0%	0%	0.2%
	Adoption probation					0.5%	0%	0%	0%
	Independent living					--	--	--	11%
Other					0.3%	0%	0.4%	17%	

* operated by child welfare organization

** outside purchased care

As illustrated in Table 1.3, the top five placement settings for the Ontario population of children aged zero to four years are: foster home operated by child welfare organization, foster home – outside purchased care, kinship care, customary care, and group home – outside purchased care. Together, these five placement settings are home to 99.1 percent of Ontario children in care aged zero to four years.

The top five placement settings for the Ontario population of young people aged five to 15 years are: foster home operated by child welfare organization, foster home – outside purchased care, group home – outside purchased care, kinship care, and group home operated by child welfare organization. Together, these five placement settings are home to 97 percent of Ontario young people in care aged five to 15 years.

The top five placement or residential settings for the Ontario population of young people aged 16 to 21 years are: foster home operated by child welfare organization, group home – outside purchased care, other, independent living, and foster home – outside purchased care. Together, these five placement or residential settings are home to 88 percent of Ontario young people in care aged 16 to 21 years.

The environments that the Ontario young people live in are varied, with 15 percent living in urban areas with a population of 100,000 or greater, and 55 percent living in urban areas with a population of less than 30,000 to 99,999. Twenty-seven percent of young people live in rural areas, while less than one percent each live on First Nations reserves or in remote Northern areas.

The language spoken most often in the homes of the young people is English, at 88 percent. Six percent of young people speak French most often, 0.5 percent speak a First Nations' language, and 1.6 percent report speaking another language at home. (Note: respondents could select more than one language.)

Ninety percent of homes are smoke-free, while ten percent of respondents report that smoking occurs in the home either daily or occasionally.

What adversities have these young people faced?

Table 1.4: Reasons for admission to care.

Age Group		CAS				ON			
		0-4	5-9	10-15	16-21	0-4	5-9	10-15	16-21
Reasons for admission to care	Physical harm					30%	36%	33%	24%
	Sexual harm					4%	8%	12%	11%
	Neglect					68%	75%	63%	38%
	Emotional harm					33%	43%	40%	27%
	Abandonment/Separation					10%	14%	16%	20%
	Problematic behaviour					2%	11%	21%	27%
	Domestic violence					21%	31%	23%	13%
	Other					24%	13%	11%	10%

Note: respondents could select more than one option.

Table 1.5: Adverse life experiences since birth.

Age Group		CAS				ON			
		0-4	5-9	10-15	16-21	0-4	5-9	10-15	16-21
Adverse life experiences	Death of a birth parent					1%	6%	9%	12%
	Death of brother or sister					1%	3%	3%	4%
	Death of relative or close friend					3%	11%	16%	35%
	Divorce or separation of birth parents					26%	47%	50%	41%
	Birth mother's abuse of drugs or alcohol					42%	49%	44%	32%
	Birth father's abuse of drugs or alcohol					31%	35%	33%	25%
	Violence between parents					35%	48%	44%	30%
	Birth mother spent time in jail					11%	13%	12%	11%
	Birth father spent time in jail					20%	24%	20%	21%
	Serious physical illness of birth mother					2%	4%	8%	15%
	Serious physical illness of birth father					1%	2%	4%	7%
	Serious psychiatric disturbance of birth mother					17%	20%	21%	18%
	Serious psychiatric disturbance of birth father					6%	7%	7%	6%
	Physical abuse					8%	29%	31%	35%
	Sexual abuse					1%	10%	16%	19%
	Emotional abuse					21%	51%	47%	41%
	Neglect					47%	78%	70%	41%
Severe poverty					15%	30%	26%	18%	

Note: respondents could select more than one option.

Who looks after the young people?

CAS Staff

Table 1.6: Basic demographic information on child welfare worker.

Age Group		CAS				ON			
		0-4	5-9	10-15	16-21	0-4	5-9	10-15	16-21
Gender of child welfare worker	Male					4%	9%	14%	13%
	Female					96%	91%	86%	87%
Length of time working with this child	Less than one year					43%	37%	32%	32%
	One to three years					53%	47%	41%	41%
	Four to nine years					3%	15%	24%	22%
	10 years or more					1%	2%	3%	4%
Total length of time working in child welfare	Less than one year					5%	6%	4%	6%
	One to three years					15%	16%	15%	16%
	Four to nine years					57%	54%	49%	44%
	10 years or more					22%	24%	32%	34%
Highest level of education achieved by child welfare worker	Less than high school diploma					0%	0%	0.1%	0.3%
	High school diploma					0%	0%	0.1%	0.2%
	Trade, vocational, apprenticeship certificate					0.3%	0.2%	0.2%	0.1%
	Non-university certificate or college diploma					16%	16%	12%	14%
	University certificate or diploma below Bachelor's level					2%	2%	3%	3%
	Bachelor's degree					51%	57%	61%	59%
	University certificate or diploma above Bachelor's level					13%	9%	8%	10%
	Master's degree					16%	15%	15%	15%
Doctoral degree					0%	0%	0.3%	0.1%	
Does child welfare worker speak the young person's primary language?	Yes					99%	99%	98%	99%
	No					1%	1%	2%	1%

Table 1.7: Training child welfare worker has received in Looking After Children

Age Group		CAS				ON			
		0-4	5-9	10-15	16-21	0-4	5-9	10-15	16-21
Total training in Looking After Children	Three days or more (12 hours+)					24%	22%	24%	28%
	Two days (7-12 hours)					63%	65%	65%	61%
	One day (6 hours)					5%	7%	5%	6%
	Less than one full day (less than 6 hours)					4%	2%	2%	2%
	No formal training					5%	4%	4%	4%
Frequency of discussion of AAR in supervision	Very often					17%	18%	21%	22%
	Sometimes					46%	47%	44%	48%
	Almost never					8%	8%	9%	9%
	Not applicable (first AAR completed)					29%	27%	26%	21%

Caregivers

Table 1.8: Basic demographic information on the caregiver.

Age Group		CAS				ON			
		0-4	5-9	10-15	16-17	0-4	5-9	10-15	16-17
Gender	Male					4%	7%	14%	18%
	Female					96%	94%	86%	82%
Years providing foster care, in total	Less than one year					7%	5%	6%	11%
	One to three years					31%	25%	19%	17%
	Four to nine years					37%	47%	40%	35%
	10 years or more					24%	23%	35%	36%
Ethnicity the same or similar to the young person?	Same					44%	54%	52%	53%
	Similar					32%	25%	29%	29%
	Neither the same nor similar					24%	21%	19%	18%
Caregiver's health	Excellent					47%	42%	41%	38%
	Very good					38%	40%	42%	43%
	Good					15%	16%	16%	18%
	Fair					1%	2%	2%	2%
	Poor					0%	0.1%	0.2%	0.3%

Note: The term "caregiver" refers to the adult caregiver who is considered the most knowledgeable about the young person. He or she is the caregiver most actively involved in the young person's care. These questions are asked only of young people in the 0-17 age groups.

Table 1.9: Training caregiver has received in Looking After Children (and other programs)

Age Group		CAS				ON			
		0-4	5-9	10-15	16-17	0-4	5-9	10-15	16-17
Total training in Looking After Children	Three days or more (12 hours+)					14%	15%	24%	28%
	Two days (7-12 hours)					37%	38%	65%	61%
	One day (6 hours)					10%	8%	5%	6%
	Less than one full day (less than 6 hours)					3%	4%	2%	2%
	No formal training					37%	35%	4%	4%
Training in programs other than Looking After Children	PRIDE*					44%	37%	28%	16%
	Agency-specific program					65%	64%	61%	34%
	Foster parent techniques (offered by CEGEP or college)					11%	16%	14%	27%
	Other training program					33%	38%	37%	9%

Note: Respondents were able to choose more than one training program other than Looking After Children

* Parenting Resources for Information, Development, and Education program.

What is the temporal stability associated with different types of placement settings?

This section illustrates the stability associated with the top five placement settings for each age group.

Table 2.1: Measures of temporal stability by placement setting and overall.

Age Group		CAS	ON		CAS		ON			CAS	ON
		0-4	0-4		5-9	10-15	5-9	10-15		16-17	16-17
Average years in placement	Foster home*		1.4	Foster home*			2.7	4.0	Foster home*		4.3
	Foster home**		1.4	Foster home**			2.2	3.3	Group home**		1.9
	Kinship care		1.7	Group home**			1.7	1.9	Other		0.7
	Customary care		1.5	Kinship care			3.4	3.3	Independent living		--
	Group home**		1.9	Group home*			2.2	1.1	Foster home**		3.5
	Overall		1.4	Overall			2.6	3.4	Overall		3.2
Average changes in main caregiver since birth	Foster home*		2.7	Foster home*			3.6	4.2	Foster home*		4.5
	Foster home**		2.8	Foster home**			4.4	5.0	Group home**		6.8
	Kinship care		2.6	Group home**			4.3	5.5	Other		7.3
	Customary care		2.1	Kinship care			3.4	4.0	Independent living		--
	Group home**		2.3	Group home*			4.1	5.9	Foster home**		5.5
	Overall		2.7	Overall			3.8	4.6	Overall		5.6
Average changes in place of residence since birth	Foster home*		3.2	Foster home*			4.7	6.2	Foster home*		6.7
	Foster home**		4.7	Foster home**			5.5	6.5	Group home**		8.9
	Kinship care		3.3	Group home**			4.5	6.8	Other		10.5
	Customary care		2.3	Kinship care			4.8	6.7	Independent living		--
	Group home**		2.0	Group home*			4.5	7.0	Foster home**		7.6
	Overall		3.4	Overall			4.9	6.4	Overall		7.9

* operated by child welfare organization

** outside purchased care

Note: The above questions are asked only of the 0-17 age groups. "Independent living" as a placement setting appears only in the 18-21 AAR-C2-2006.

Provincial range years in placement overall by age group: 0-4 = 0-4 years; 5-9 = 0-9 years; 10-15 = 0.1-15.8 years; 16-21 = .08-17 years

Provincial range changes in main caregiver since birth by age group: 0-4 = 1-11 caregivers; 5-9 = 1-15 caregivers; 10-15 = 1-27 caregivers; 16-21 = 1-30 caregivers

Provincial range changes in place of residence since birth by age group: 0-4 = 1-66 changes; 5-9 = 1-22 changes; 10-15 = 1-70 changes; 16-17 = 1-83 changes

Table 2.2: Permanency of placement by placement setting.

Age Group		CAS	ON		CAS		ON			CAS	ON
		0-4	0-4		5-9	10-15	5-9	10-15		16-17	16-17
Young people who are in a permanent placement (as reported by the caregiver)	Foster home*		20%	Foster home*			54%	83%	Foster home*		88%
	Foster home**		30%	Foster home**			58%	83%	Group home**		56%
	Kinship care		72%	Group home**			60%	57%	Other		47%
	Customary care		64%	Kinship care			89%	89%	Independent living		--
	Group home**		50%	Group home*			40%	33%	Foster home**		85%
	Overall		24%	Overall			59%	78%	Overall		75%
Young people who have a permanency plan	Foster home*		77%	Foster home*			73%	84%	Foster home*		85%
	Foster home**		78%	Foster home**			76%	83%	Group home**		79%
	Kinship care		81%	Group home**			73%	68%	Other		83%
	Customary care		71%	Kinship care			94%	79%	Independent living		--
	Group home**		75%	Group home*			100%	71%	Foster home**		77%
	Overall		68%	Overall			76%	80%	Overall		82%
Young people who have had “much” continuity of care (as reported by the child welfare worker)	Foster home*		79%	Foster home*			82%	83%	Foster home*		77%
	Foster home**		72%	Foster home**			68%	75%	Group home**		48%
	Kinship care		81%	Group home**			58%	61%	Other		11%
	Customary care		82%	Kinship care			92%	80%	Independent living		--
	Group home**		83%	Group home*			80%	33%	Foster home**		69%
	Overall		79%	Overall			80%	76%	Overall		55%
All feasible action is being taken to create or maintain a permanent placement (as reported by the child welfare worker)	Foster home*		99%	Foster home*			98%	100%	Foster home*		99%
	Foster home**		99%	Foster home**			98%	100%	Group home**		99%
	Kinship care		100%	Group home**			97%	100%	Other		97%
	Customary care		100%	Kinship care			99%	100%	Independent living		--
	Group home**		100%	Group home*			100%	100%	Foster home**		100%
	Overall		99%	Overall			98%	99%	Overall		99%

* operated by child welfare organization

** outside purchased care

Note: The above questions are asked only of the 0-17 age groups. “Independent living” as a placement setting appears only in the 18-21 AAR-C2-2006.

Quality of Care

Experiences in Care

Table 2.3: Percentage of young people who feel they can talk to different people in their lives.

Age Group		CAS		ON	
		10-15	16-17	10-15	16-17
People who the young people feel they can talk to	Foster mother			70%	47%
	Foster father			50%	29%
	Birth mother			34%	30%
	Birth father			17%	14%
	Brother			26%	24%
	Sister			31%	31%
	Grandparents			29%	25%
	Other relative			24%	24%
	Birth parent's partner			6%	7%
	A friend of the family or a friend's parent			21%	22%
	Teacher			40%	25%
	Coach or leader			12%	8%
	Child welfare worker			65%	55%
	Babysitter			5%	2%
	Boyfriend or girlfriend			13%	30%
Other			33%	29%	
Age Group		CAS	ON		
		10-15	10-15	CAS	ON
				16-17	16-17
Average number of people the young people feel they can talk to (by placement setting)	Foster home*		5.4	Foster home*	5.0
	Foster home**		4.5	Group home**	4.3
	Group home**		4.4	Other	3.9
	Kinship care		5.4	Independent living	--
	Group home*		4.8	Foster home**	5.3
	Overall		5.3	Overall	4.7

Note: Respondents could select more than one answer. This question above is only asked of 10 to 17 year olds.

Provincial range average number of people the young people feel they can talk to by age group: 10-15 = 1-16 people; 16-17 = 1-13 people.

Table 2.4: Breakdown of placement satisfaction by placement setting and overall.

Age Group		CAS	ON			CAS	ON
		10-15	10-15			16-17	16-17
Average placement satisfaction score	Foster home*		11.0	Foster home*		10.7	
	Foster home**		11.0	Group home**		7.6	
	Group home**		7.6	Other		9.5	
	Kinship care		10.9	Independent living		--	
	Group home*		7.3	Foster home**		10.3	
	Overall		10.4	Overall		9.7	

Note: Placement satisfaction is a six-item, three-point scale comprised of the following items: “You like living here”, “You feel safe living in this home”, “You would be pleased if you were to live here for a long time”, “You are satisfied with the amount of privacy you have here”, “You have a good relationship with other people with whom you are living” and “Overall, you are satisfied with your current living situation.” The possible responses for each item are as follows: Very little, scored 0; Some, scored 1; A great deal, scored 2. The possible total score range is 0-12, with a higher score indicating greater placement satisfaction.

The question above is asked only of 10-17 year olds.

* operated by a child welfare organization

** outside purchased care.

Table 2.5: Breakdown of average positive life experiences by placement setting and overall.

Age Group		CAS	ON			CAS	ON
		10-15	10-15			16-17	16-17
Average number of positive life experiences	Foster home*		17.8	Foster home*		16.2	
	Foster home**		17.6	Group home**		14.5	
	Group home**		15.6	Other		12.4	
	Kinship care		18.3	Independent living		--	
	Group home*		15.0	Foster home**		16.0	
	Overall		17.4	Overall		15.1	

Note: Positive life experiences are opportunities that the young people have had over the last year or two. There are 22 positive life experiences included in the AAR and the young person is asked which of them he/she has experienced. The total possible range of scores is 1-22. Positive life experiences are reported by young people in the 10-17 age groups.

* operated by a child welfare organization

** outside purchased care

Parenting

Table 2.6: Average feelings toward caregivers by placement setting and overall.

Age Group		CAS	ON			CAS	ON
		10-15	10-15			16-17	16-17
Young person's feelings toward female caregiver	Foster home*		6.9	Foster home*		6.5	
	Foster home**		6.8	Group home**		5.8	
	Group home**		5.8	Other		5.7	
	Kinship care		6.9	Independent living		--	
	Group home*		5.3	Foster home**		6.2	
	Overall		6.7	Overall		6.2	
Young person's feelings toward male caregiver	Foster home*		6.3	Foster home*		5.8	
	Foster home**		6.2	Group home**		5.5	
	Group home**		5.5	Other		5.0	
	Kinship care		6.4	Independent living		--	
	Group home*		4.9	Foster home**		6.0	
	Overall		6.1	Overall		5.7	

Note: The Feelings Toward Caregiver score is a four-item, three-point scale. The items are: “How well do you feel he/she understands you”, “How much fairness do you receive from him/her?”, “How much affection do you receive from him/her?” and the response choices for these questions are: A great deal, Some, and Very little. The final question is “Overall, how would you describe your relationship with her?” and the response choices are: Very close, scored 2; Somewhat close, scored 1; Not very close, scored 0. The total positive range of scores is 0-8. Higher scores on this scale indicate a greater degree of parental acceptance perceived by the young person.

This score is reported by young people in the 10-17 age groups.

* operated by a child welfare organization

** outside purchased care.

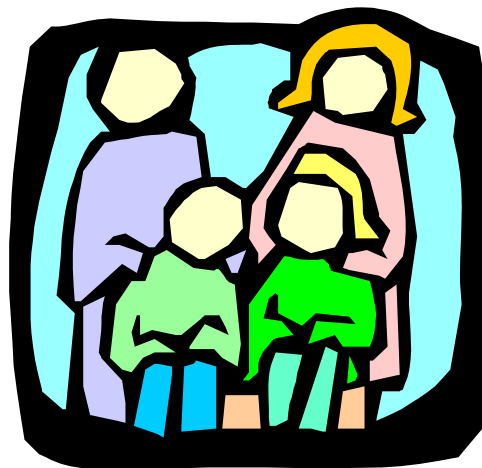


Table 2.7: Parenting scores by placement setting and overall.

Age Group		CAS	ON		CAS		ON			CAS	ON
		0-4	0-4		5-9	10-15	5-9	10-15		16-17	16-17
Positive Parenting Score	Foster home*		18.0	Foster home*			14.7	15.5	Foster home*		15.0
	Foster home**		17.8	Foster home**			14.8	15.5	Group home**		15.2
	Kinship care		17.7	Group home**			16.0	15.4	Other		14.6
	Customary care		18.2	Kinship care			13.7	15.2	Independent living		--
	Group home**		17.8	Group home*			15.3	15.3	Foster home**		15.2
	Overall		18.0	Overall			14.6	15.4	Overall		15.1
Nurturing Parenting Score Total possible range: 0-14	Foster home*		--	Foster home*			--	12.4	Foster home*		11.6
	Foster home**		--	Foster home**			--	12.5	Group home**		11.5
	Kinship care		--	Group home**			--	11.3	Other		10.8
	Customary care		--	Kinship care			--	12.3	Independent living		--
	Group home**		--	Group home*			--	10.7	Foster home**		11.4
	Overall		--	Overall			--	12.2	Overall		11.5
Ineffective Parenting Score (for 3-17 year olds)	Foster home*		7.4	Foster home*			8.1	2.7	Foster home*		2.9
	Foster home**		8.1	Foster home**			8.2	2.6	Group home**		3.4
	Kinship care		8.1	Group home**			6.5	3.4	Other		3.4
	Customary care		5.8	Kinship care			8.9	3.5	Independent living		--
	Group home**		2.3	Group home*			8.9	3.8	Foster home**		2.8
	Overall		7.4	Overall			8.2	2.8	Overall		3.0

Note: The scales described are reported by the caregiver's of young people in the 0-17 age groups (unless otherwise noted).

The Positive Parenting scale for 0-9 year olds is a parent-reported, five-item, five-point scale. An examples of items included in the scale is: "How often do you and the child laugh together?" Response choices are: Many times each day, scored 4; One or two times a day, scored 3; A few times a week, scored 2; About once a week or less, scored 1; and Never, scored 0. The total possible range is 0-20. Higher scores on this scale indicate a greater number of positive interactions.

The Positive Parenting scale for 10-17 year olds is a parent-reported, eight-item, three-point scale. Examples of items included in the scale are: "I praise ...'s effort and help in the home" and "I include ... in celebrations in the home." Response choices are: Often or always, scored 2; Sometimes, scored 1; and Never or rarely, scored 0. The total possible range is 0-16. Higher scores on this scale indicate a greater number of positive interactions.

The Nurturing Parenting Practices scale is a youth-reported, seven-item, three-point scale. Examples of items included in the scale are: "My foster parent[s] (or other adult caregiver[s]) listen to my ideas and opinions" and "My foster parent[s] (or other adult caregiver[s]) seem proud of the things I do." Response choices are: Often or always, scored 2; Sometimes, scored 1; and Never or rarely, scored 0. Higher scores on this scale indicate greater degree of parental nurturance perceived by the young person.

The Ineffective Parenting Practices scale for 3-9 year olds is a parent-reported, seven-item, five-point scale. An example of items included in the scale is: "How often do you get angry when you punish the child?" Wording differs depending on the specific age group of the child. Response choices are: All the time, scored 4; More than half the time, scored 3; About half the time, scored 2; Less than half the time, scored 1; and Never, scored 0. Note that one of the questions is reverse coded. The total possible range is 0-28. Higher scores on this scale indicate a greater number of ineffective interactions.

The Ineffective Parenting Practices scale for 10-17 year olds is a youth-reported, six-item, three-point scale. Examples of items included in the scale are: "My foster parent[s] (or other adult caregiver[s]) soon forget a rule they have made" and "My foster parent[s] (or other adult caregiver[s]) get angry and yell at me." Response choices are: Often or always, scored 2; Sometimes, scored 1; and Never or rarely, scored 0. The total possible range is 0-18. Higher scores on this scale indicate a greater degree of parental rejection perceived by the young person.

* operated by a child welfare organization

** outside purchased care.

Table 2.8: Health services received by placement setting and overall.

Age Group		CAS	ON		CAS		ON			CAS	ON
		0-4	0-4		5-9	10-15	5-9	10-15		16-21	16-21
Young people who have had a medical examination in the last year	Foster home*		97%	Foster home*			95%	95%	Foster home*		93%
	Foster home**		97%	Foster home**			98%	98%	Group home**		98%
	Kinship care		97%	Group home**			100%	100%	Other		87%
	Customary care		92%	Kinship care			94%	97%	Independent living		71%
	Group home**		100%	Group home*			90%	98%	Foster home**		98%
	Overall		89%	Overall			96%	97%	Overall		90%
Young people who have had a dental examination in the last year	Foster home*		35%	Foster home*			97%	99%	Foster home*		98%
	Foster home**		59%	Foster home**			99%	99%	Group home**		97%
	Kinship care		49%	Group home**			97%	98%	Other		83%
	Customary care		27%	Kinship care			97%	97%	Independent living		77%
	Group home**		100%	Group home*			100%	98%	Foster home**		98%
	Overall		34%	Overall			98%	98%	Overall		92%
Young people taking psychotropic medications who are being monitored by a health care professional** *	Foster home*		10%	Foster home*			80%	82%	Foster home*		72%
	Foster home**		24%	Foster home**			82%	93%	Group home**		86%
	Kinship care		17%	Group home**			96%	94%	Other		64%
	Customary care		0%	Kinship care			59%	56%	Independent living		--
	Group home**		67%	Group home*			80%	90%	Foster home**		76%
	Overall		13%	Overall			80%	86%	Overall		77%
Young people whose immunizations are up to date	Foster home*		97%	Foster home*			98%	96%	Foster home*		97%
	Foster home**		97%	Foster home**			97%	99%	Group home**		97%
	Kinship care		100%	Group home**			100%	97%	Other		95%
	Customary care		92%	Kinship care			99%	98%	Independent living		94%
	Group home**		100%	Group home*			100%	93%	Foster home**		98%
	Overall		97%	Overall			98%	97%	Overall		96%

* operated by a child welfare organization

** outside purchased care.

*****Note:** This question is asked of young people in the 0-17 age groups**Figure 2.9:** Percentage of young people who have an RESP or a Canada Learning Bond by placement setting.

Age Group		CAS	ON		CAS		ON			CAS	ON
		0-4	0-4		5-9	10-15	5-9	10-15		16-21	16-21
Young people who have an RESP or a Canada Learning Bond	Foster home*		8%	Foster home*			5%	4%	Foster home*		7%
	Foster home**		6%	Foster home**			6%	4%	Group home**		2%
	Kinship care		10%	Group home**			0%	3%	Other		1%
	Customary care		8%	Kinship care			10%	8%	Independent living		2%
	Group home**		0%	Group home*			0%	7%	Foster home**		6%
	Overall		7%	Overall			5%	4%	Overall		5%

* operated by a child welfare organization

** outside purchased care

Opportunities for First Nations Young People

Table 2.10: Opportunities for First Nations young people by placement setting and overall.

Age Group		CAS	ON			CAS		ON		CAS	ON
		0-4	0-4			5-9	10-15	5-9	10-15	16-17	16-17
Young people who report or are reported as being of First Nations descent			19%					21%	17%		13%
Young people who report having enough opportunities to visit their First Nation's community***	Foster home*		29%	Foster home*				41%	48%	Foster home*	47%
	Foster home**		60%	Foster home**				46%	49%	Group home**	72%
	Kinship care		60%	Group home**				67%	42%	Other	61%
	Customary care		9%	Kinship care				58%	50%	Independent living	--
	Group home**		100%	Group home*				--	71%	Foster home**	53%
	Overall		30%	Overall				44%	48%	Overall	59%
Young people who report having enough opportunities to participate in their First Nations community events, activities, or festivals***	Foster home*		41%	Foster home*				50%	57%	Foster home*	50%
	Foster home**		30%	Foster home**				38%	53%	Group home**	79%
	Kinship care		100%	Group home**				100%	55%	Other	68%
	Customary care		18%	Kinship care				64%	69%	Independent living	--
	Group home**		100%	Group home*				--	71%	Foster home**	63%
	Overall		41%	Overall				50%	57%	Overall	63%

Note: These questions are caregiver-reported for the 0-9 age group, and youth reported for the 10-17 age group. Young people in the 18-21 age group are included in the population who reported being of First Nations descent.

* operated by a child welfare organization

** outside purchased care.

External Assets

The Search Institute has identified the following twenty external assets as building blocks that help young people grow up healthy, caring, and responsible. External assets fall under the following categories: Support, Empowerment, Boundaries and Expectations, and Constructive Use of Time. Together with the Internal Assets (page 34), these make up a young person's Asset Profile (page 34).

Table 2.11: Average external assets by placement setting and overall.

Age Group		CAS		ON				CAS	ON
		5-9	10-15	5-9	10-15			16-21	16-21
Average number of external assets	Foster home*			16.2	13.5	Foster home*		13.0	
	Foster home**			16.4	13.1	Group home**		11.1	
	Group home**			15.9	11.0	Other		8.4	
	Kinship care			16.5	13.4	Independent living		12.1	
	Group home*			15.7	10.9	Foster home**		13.4	
	Overall			16.3	12.9	Overall		11.6	

Note: Possible range of averages for 5-9 age group is 1-20. Possible range for 10-21 age group is 1-20.

* operated by a child welfare organization

** outside purchased care.

Education: How are the Young People Doing?

Table 3.1: Academic achievement as rated by caregivers.

Age Group		CAS				ON			
		5-9	10-11	12-15	16-17	5-9	10-11	12-15	16-17
Reading (and other language arts for 12-17 year olds)	Very well or well					26%	33%	28%	20%
	Average					39%	40%	52%	49%
	Poorly or very poorly					35%	27%	20%	31%
Mathematics	Very well or well					18%	19%	25%	23%
	Average					48%	47%	49%	47%
	Poorly or very poorly					34%	34%	26%	30%
Written Work (for 5-11 year olds)	Very well or well					26%	18%	--	--
	Average					39%	44%	--	--
	Poorly or very poorly					26%	39%	--	--
Science (for 12-17 year olds)	Very well or well					--	--	23%	22%
	Average					--	--	56%	54%
	Poorly or very poorly					--	--	21%	24%
Overall academic achievement	Very well or well					19%	22%	24%	24%
	Average					50%	51%	58%	57%
	Poorly or very poorly					31%	27%	18%	19%
Academic achievement scale	Mean					3.5	3.7	4.1	4.0
	Median					4.0	4.0	4.0	4.0

Note: The above questions are asked pertaining to young people in the 5 to 17 age group. The Academic Achievement scale is a four-item, three-point scale, made up of the subjects above. Response choices are the same as above: Very well or well, scored 2; Average, scored 1; Poorly or very poor, scored 0. Range of possible scores is from 0 to 8. Higher scores on this scale indicate greater school performance, as rated by the caregiver.

Table 3.2: Young people's rating of their own school success.

Age Group		CAS		ON	
		10-15	16-17	10-15	16-17
Young people's rating of their own school success	Very well or well			38%	47%
	Average			54%	34%
	Poorly or very poor			8%	19%

Note: This question is asked only of young people in the 10-17 age groups.



Figure 3.1: Percentage of young people who have or have not ever repeated a grade.

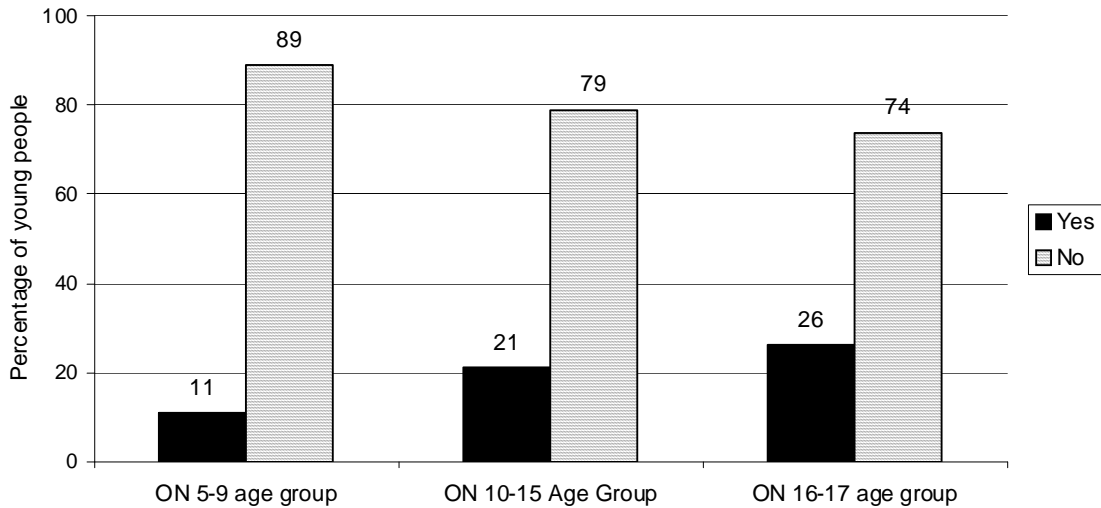


Table 3.3: Percentage of young people reporting the importance of school-related activities.

Age Group		CAS		ON	
		10-15	16-17	10-15	16-17
Get good grades?	Very important			67%	59%
	Somewhat important			28%	34%
	Not important			6%	9%
Make friends?	Very important			62%	48%
	Somewhat important			31%	39%
	Not important			7%	13%
Participate in extracurricular activities?	Very important			38%	23%
	Somewhat important			40%	35%
	Not important			22%	42%
Learn new things?	Very important			55%	49%
	Somewhat important			38%	43%
	Not important			7%	8%
Always show up to class on time?	Very important			66%	48%
	Somewhat important			25%	35%
	Not important			9%	17%
Express your opinion in class?	Very important			42%	41%
	Somewhat important			43%	41%
	Not important			16%	19%
Take part in student council or other similar groups?	Very important			14%	6%
	Somewhat important			25%	18%
	Not important			61%	77%
Hand in assignments on time?	Very important			65%	56%
	Somewhat important			26%	35%
	Not important			8%	10%

Note: The above questions are asked only of young people in the 10-17 age groups

Table 3.4: Level of education that caregivers and young people hope is achieved.

Age Group		CAS				ON			
		0-4	5-9	10-15	16-21	0-4	5-9	10-15	16-21
Primary/elementary school	Young person					--	--	--	--
	Caregiver					0.2%	0.4%	0.3%	--
Middle school/junior high	Young person					--	--	0.4%	3%
	Caregiver					--	--	--	9%
Secondary or high school	Young person					--	--	10%	17%
	Caregiver					4%	9%	12%	20%
Technical, trade, or vocational school	Young person					--	--	11%	11%
	Caregiver					0%	18%	26%	14%
College/CEGEP/ apprenticeship program	Young person					--	--	33%	47%
	Caregiver					19%	25%	27%	43%
University degree	Young person					--	--	26%	17%
	Caregiver					71%	42%	30%	13%
More than one university degree	Young person					--	--	6%	4%
	Caregiver					--	--	--	2%
Other	Young person					--	--	2%	0%
	Caregiver					2%	3%	5%	0%
I don't know	Young person					--	--	12%	--
	Caregiver					--	--	--	--

Table 3.5: Average grade achieved by school stream.

Age Group		CAS		ON	
		10-15	16-17	10-15	16-17
Academic (University-bound)	90%-100%			4%	2%
	80%-89%			21%	26%
	70%-79%			46%	37%
	60%-69%			19%	24%
	50%-59%			6%	4%
	Less than 50%			2%	3%
	Not applicable, ungraded			1%	3%
	Don't know			1%	1%
Applied (College-bound)	90%-100%			1%	1%
	80%-89%			9%	9%
	70%-79%			33%	30%
	60%-69%			33%	32%
	50%-59%			16%	11%
	Less than 50%			5%	1%
	Not applicable, ungraded			1%	7%
	Don't know			3%	7%
Other (e.g., special education)	90%-100%			1%	3%
	80%-89%			6%	9%
	70%-79%			20%	21%
	60%-69%			24%	21%
	50%-59%			13%	10%
	Less than 50%			4%	3%
	Not applicable, ungraded			26%	24%
	Don't know			7%	9%

Note: This table is comprised only of those young people who are currently attending high school in a regular grade 9, 10, 11, or 12.

Table 3.6: Young person’s feelings about different school subjects.

Age Group		CAS		ON	
		10-15	16-17	10-15	16-17
Mathematics	I like it a lot			31%	22%
	I like it a little			36%	30%
	I don't like it very much			15%	14%
	I hate it			16%	28%
	I don't take it			3%	6%
English	I like it a lot			34%	34%
	I like it a little			41%	33%
	I don't like it very much			13%	15%
	I hate it			8%	12%
	I don't take it			5%	7%
French	I like it a lot			18%	7%
	I like it a little			18%	11%
	I don't like it very much			13%	8%
	I hate it			17%	21%
	I don't take it			34%	53%
Science*	I like it a lot			35%	29%
	I like it a little			33%	30%
	I don't like it very much			13%	10%
	I hate it			9%	13%
	I don't take it			12%	18%
Gym/Phys. Ed.**	I like it a lot			69%	--
	I like it a little			14%	--
	I don't like it very much			6%	--
	I hate it			5%	--
	I don't take it			7%	--
Arts (including music and drama)**	I like it a lot			62%	--
	I like it a little			20%	--
	I don't like it very much			5%	--
	I hate it			4%	--
	I don't take it			9%	--

*This subject is only asked of 12-17 year olds.

**These specific subjects are only asked of 12-15 year olds.

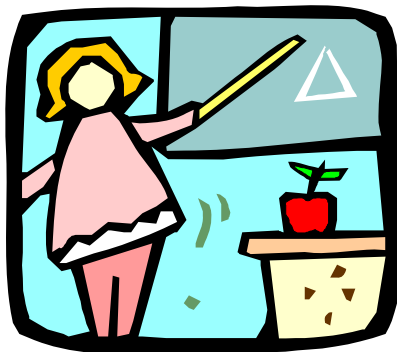


Table 3.7: Average frequency of literacy-promoting activities, as reported by the caregiver.

Age Group		CAS	ON	CAS	ON	CAS		ON
		1-2	1-2	3-4	3-4			5-9
Average frequency of literacy-promoting activities	Foster home*		24.0		42.9	Foster home*		23.0
	Foster home**		24.2		44.8	Foster home**		22.7
	Kinship care		24.4		45.6	Group home**		21.1
	Customary care		25.6		50.0	Kinship care		22.7
	Group home**		--		25.0	Group home*		20.5
	Overall		24.1		43.1	Overall		22.8

Note: The Literacy-Promoting Scale for children aged 1-2 is an eight-item, five-point scale, reported by the caregiver. A sample question from the scale is: “How often do you (or your spouse or partner) get the chance to do the following with the child: Read stories or show pictures or wordless baby books?” and response choices are: Daily, scored 4; A few times a week, scored 3; Once a week, scored 2; A few times a month, scored 1; Rarely or never, scored 0. The possible range is 0 to 32, with a higher score indicating more frequent literacy promoting activities.

The Literacy-Promoting Scale for children aged 3-4 is a 15-item, five-point scale, reported by the caregiver. A sample question from the scale is: “How often do you (or your spouse or partner) get the chance to do the following with the child: Teach him/her to name printed letters and/or numbers?” and response choices are: Daily, scored 4; A few times a week, scored 3; Once a week, scored 2; A few times a month, scored 1; Rarely or never, scored 0. The possible range is 0 to 60, with a higher score indicating more frequent literacy promoting activities.

The Literacy-Promoting Scale for children aged 5-9 is a five-item, seven-point scale, reported by the caregiver. A sample question from the scale is: “How often does the child read (or – in the case of younger children – look at books or try to read on his/her own) for pleasure?” and response choices are: Daily, scored 6; A few times a week, scored 5; Once a week, scored 4; A few times a month, scored 3; Once a month, scored 2; Less than once a month, scored 1; Rarely or never, scored 0. The possible range is 0 to 35, with a higher score indicating more frequent literacy promoting activities.

* operated by a child welfare organization

** outside purchased care.



How Physically Healthy are the Young People?

Figure 4.1: Health status of young people by placement setting.

Age Group		CAS	ON			CAS		ON				CAS	ON
		0-4	0-4			5-9	10-15	5-9	10-15			16-21	16-21
Foster home*	Excellent		47%	Foster home*	Excellent			52%	52%	Foster home*	Excellent		43%
	V. Good		34%		V. Good			33%	33%		V. Good		32%
	Good		14%		Good			13%	13%		Good		21%
	Fair		3%		Fair			3%	2%		Fair		3%
	Poor		2%		Poor			0.2%	0.2%		Poor		1%
Foster home**	Excellent		53%	Foster home**	Excellent			54%	50%	Group home**	Excellent		25%
	V. Good		29%		V. Good			33%	33%		V. Good		38%
	Good		12%		Good			9%	15%		Good		31%
	Fair		4%		Fair			3%	2%		Fair		6%
	Poor		2%		Poor			0.6%	0.4%		Poor		0.5%
Kinship care	Excellent		36%	Group home**	Excellent			40%	34%	Other	Excellent		23%
	V. Good		42%		V. Good			32%	42%		V. Good		29%
	Good		18%		Good			29%	21%		Good		36%
	Fair		3%		Fair			0%	3%		Fair		11%
	Poor		0%		Poor			0%	0.5%		Poor		0.6%
Customary care	Excellent		33%	Kinship care	Excellent			61%	49%	Ind. living	Excellent		21%
	V. Good		67%		V. Good			32%	32%		V. Good		34%
	Good		0%		Good			7%	16%		Good		38%
	Fair		0%		Fair			0%	2%		Fair		7%
	Poor		0%		Poor			0%	0%		Poor		1%
Group home**	Excellent		0%	Group home*	Excellent			50%	29%	Foster home**	Excellent		32%
	V. Good		50%		V. Good			20%	27%		V. Good		34%
	Good		33%		Good			20%	40%		Good		28%
	Fair		0%		Fair			0%	4%		Fair		5%
	Poor		17%		Poor			10%	0%		Poor		0%

* operated by a child welfare organization

** outside purchased care.



Table 4.2: Young person's activity level compared to other youths by placement setting.

Age Group		CAS	ON			CAS		ON	
		0-4	0-4			5-9	10-15	5-9	10-15
Foster home*	Much more		19%	Foster home*	Much more			21%	19%
	Moderately more		23%		Moderately more			22%	26%
	Equally		50%		Equally			47%	44%
	Moderately less		6%		Moderately less			8%	8%
	Much less		3%		Much less			2%	2%
Foster home**	Much more		27%	Foster home**	Much more			23%	24%
	Moderately more		20%		Moderately more			18%	21%
	Equally		41%		Equally			51%	40%
	Moderately less		8%		Moderately less			8%	11%
	Much less		5%		Much less			1%	4%
Kinship care	Much more		15%	Group home**	Much more			22%	12%
	Moderately more		39%		Moderately more			19%	18%
	Equally		46%		Equally			43%	52%
	Moderately less		0%		Moderately less			5%	12%
	Much less		0%		Much less			11%	8%
Customary care	Much more		0%	Kinship care	Much more			21%	22%
	Moderately more		42%		Moderately more			23%	20%
	Equally		50%		Equally			51%	49%
	Moderately less		8%		Moderately less			4%	7%
	Much less		0%		Much less			1%	2%
Group home**	Much more		0%	Group home*	Much more			30%	0%
	Moderately more		0%		Moderately more			0%	33%
	Equally		33%		Equally			30%	33%
	Moderately less		17%		Moderately less			30%	33%
	Much less		50%		Much less			10%	0%

* operated by a child welfare organization

** outside purchased care.

Table 4.3: Percentage of young people who have difficulties in one or more areas of physical ability.

Age Group		CAS				ON			
		1-4	5-9	10-15	16-17	1-4	5-9	10-15	16-17
Physical abilities	Speaking					32%	25%	10%	6%
	Walking					13%	7%	4%	4%
	Climbing					7%	4%	3%	3%
	Bending					4%	4%	2%	5%
	Seeing					9%	21%	22%	23%
	Hearing					6%	7%	5%	5%
	Using hands and fingers					8%	10%	4%	3%

Note: This question was asked only of young people in the 1-17 age groups.

Table 4.4: Average number of physical difficulties by placement setting.

Age Group		CAS	ON		CAS		ON			CAS	ON
		1-4	1-4		5-9	10-15	5-9	10-15		16-17	16-17
Average number of physical difficulties	Foster home*		1.9	Foster home*			1.8	1.5	Foster home*		0.4
	Foster home**		2.0	Foster home**			1.7	1.4	Group home**		0.6
	Kinship care		1.4	Group home**			2.6	1.7	Other		0.4
	Customary care		1.6	Kinship care			1.5	1.2	Independent living		--
	Group home**		5.0	Group home*			3.3	1.3	Foster home**		0.6
	Overall		1.9	Overall			1.8	1.5	Overall		0.5

Note: This question was asked only of young people in the 1-17 age groups.

* operated by a child welfare organization

** outside purchased care.

Table 4.5: Percentage of young people who have long term conditions by placement setting.

Age Group		CAS				ON			
		0-4	5-9	10-15	16-21	0-4	5-9	10-15	16-21
Long-term conditions	Food or digestive allergies					7%	4%	4%	5%
	Respiratory allergies					2%	3%	6%	7%
	Any other allergies					4%	4%	7%	9%
	Asthma					13%	11%	9%	12%
	Bronchitis					2%	1%	1%	2%
	Heart condition or disease					3%	2%	2%	1%
	Epilepsy					1%	2%	2%	1%
	Cerebral palsy					2%	2%	1%	1%
	Kidney condition or disease					1%	0.7%	1%	0.4%
	Developmental disability					9%	18%	17%	12%
	Learning disability					8%	30%	39%	28%
	Attention deficit disorder					4%	34%	40%	26%
	Emotional, psychological, or nervous difficulties					4%	26%	32%	22%
	Fetal alcohol spectrum disorder					4%	11%	7%	5%
	Diabetes					0%	0.7%	0.4%	2%
	Blood disorder					0.5%	1%	1%	1%
Other long term condition					10%	9%	10%	9%	

Table 4.6: Average number of long-term conditions by placement setting.

Age Group		CAS	ON		CAS		ON			CAS	ON
		0-4	0-4		5-9	10-15	5-9	10-15		16-21	16-21
Average number of long-term conditions	Foster home*		1.7	Foster home*			2.3	2.3	Foster home*		2.1
	Foster home**		1.7	Foster home**			2.4	2.3	Group home**		2.5
	Kinship care		2.2	Group home**			2.7	2.7	Other		2.1
	Customary care		1.9	Kinship care			2.2	1.8	Independent living		2.0
	Group home**		3.0	Group home*			2.6	2.6	Foster home**		2.5
	Overall		1.7	Overall			2.3	2.4	Overall		2.3

* operated by a child welfare organization

** outside purchased care.

Table 4.7: Health-related experiences by placement setting.

Age Group		CAS	ON		CAS		ON			CAS	ON
		0-4	0-4		5-9	10-15	5-9	10-15		16-21	16-21
Young people who report being usually free of pain and discomfort	Foster home*		--	Foster home*			--	78%	Foster home*		77%
	Foster home**		--	Foster home**			--	79%	Group home**		72%
	Kinship care		--	Group home**			--	81%	Other		63%
	Customary care		--	Kinship care			--	77%	Independent living		70%
	Group home**		--	Group home*			--	81%	Foster home**		71%
Young people who have spent an overnight in a hospital in the past 12 months	Foster home*		12%	Foster home*			4%	4%	Foster home*		6%
	Foster home**		13%	Foster home**			6%	5%	Group home**		15%
	Kinship care		9%	Group home**			13%	7%	Other		17%
	Customary care		8%	Kinship care			1%	5%	Independent living		22%
	Group home**		67%	Group home*			20%	17%	Foster home**		3%
Young people who report eating breakfast most school days	Foster home*		--	Foster home*			--	89%	Foster home*		66%
	Foster home**		--	Foster home**			--	86%	Group home**		62%
	Kinship care		--	Group home**			--	83%	Other		41%
	Customary care		--	Kinship care			--	85%	Independent living		--
	Group home**		--	Group home*			--	80%	Foster home**		59%

* operated by a child welfare organization

** outside purchased care.

Figure 4.8: Most serious injuries experienced by young people within last 12 months.

Age Group		CAS				ON			
		0-4	5-9	10-15	16-17	0-4	5-9	10-15	16-17
Most serious injuries	Broken or fractured bones					13%	12%	20%	17%
	Burn or scald					10%	3%	2%	7%
	Dislocation					1%	3%	2%	2%
	Sprain or strain					3%	4%	22%	21%
	Cut, scrape, or bruise					55%	50%	34%	27%
	Concussion					1%	2%	3%	6%
	Poisoning by substance or liquid					0%	2%	3%	2%
	Internal injury					3%	9%	1%	4%
	Dental injury					4%	2%	3%	3%
Other serious injury					10%	12%	10%	13%	

Note: These results reflect only those young people whose caregivers responded “yes” when asked if the young person was seriously injured in the past 12 months.

Table 4.9: Young people's experience with cigarettes, alcohol, and drugs.

		CAS		ON	
		12-15	16-17	12-15	16-17
Age Group					
Smoking cigarettes	Daily			6%	35%
	Occasionally			5%	10%
	Not at all			89%	55%
Alcohol	I have never had a drink of alcohol			75%	28%
	I only tried once or twice, but I don't drink alcohol anymore			15%	18%
	At least one drink a few times a year			6%	25%
	At least one drink about one or twice a month			3%	20%
	At least one drink weekly or more often			1%	9%
Marijuana and cannabis products	I have never done it			83%	39%
	I have done it, but not during the past 12 months			4%	16%
	I have done it at least once in the past 12 months			13%	45%
Have you ever used other drugs?*	Yes			8%	27%
	No			92%	74%
Hallucinogens (LSD/acid, magic mushrooms)*	I have never done it			84%	60%
	I have done it, but not during the past 12 months			9%	19%
	I have done it at least once in the past 12 months			8%	21%
Glues or solvents*	I have never done it			95%	94%
	I have done it, but not during the past 12 months			3%	3%
	I have done it at least once in the past 12 months			2%	3%
Drugs without a prescription (downers, uppers, Ritalin, tranquilizers, etc.)*	I have never done it			89%	68%
	I have done it, but not during the past 12 months			4%	11%
	I have done it at least once in the past 12 months			7%	20%
Other drugs (crack, cocaine, heroin, ecstasy, etc.)*	I have never done it			85%	57%
	I have done it, but not during the past 12 months			5%	17%
	I have done it at least once in the past 12 months			10%	27%

*These questions are asked only of young people in the 12-17 age group.

What is the Status of the Young People's Emotional Health and Overall Well-Being?

Table 5.1: General self-esteem scores by placement setting.

Age Group		CAS	ON			CAS	ON
		10-15	10-15			16-17	16-17
Average general self-esteem score	Foster home*		7.0	Foster home*		6.8	
	Foster home**		6.9	Group home**		6.7	
	Group home**		6.6	Other		6.5	
	Kinship care		6.9	Independent living		--	
	Group home*		6.1	Foster home**		7.0	
	Overall		6.9	Overall		6.8	

Note: The General Self-Esteem scale is a four-item, three-point scale, reported by the young person. A sample question from the scale is: "A lot of things about me are good" and response choices are True or mostly true scored 2, Sometimes false/sometimes true scored 1, and False or mostly false scored 0. The possible range of scores is from 0 to 8, with a higher score indicating a greater degree of positive general self-image. These questions are asked only of young people in the 10-17 age group.

* operated by a child welfare organization

** outside purchased care.

Figure 5.2: Physical self-esteem scores by placement setting.

Age Group		CAS	ON			CAS	ON
		10-15	10-15			16-17	16-17
Average physical self-esteem score	Foster home*		9.8	Foster home*		9.6	
	Foster home**		9.8	Group home**		9.1	
	Group home**		9.2	Other		9.3	
	Kinship care		9.7	Independent living		--	
	Group home*		9.3	Foster home**		10.1	
	Overall		9.6	Overall		9.4	

Note: The Physical Self-Esteem scale is a three-item, five-point scale, reported by the young person. A sample question from the scale is: "I am good looking" and response choices are: True, scored 4; Mostly true, scored 3; Sometimes false or sometimes true, scored 2; Mostly false, scored 1; and False, scored 0. The possible range of scores is from 0 to 12, with a higher score indicating a greater degree of positive physical self-image. These questions are asked only of young people in the 10-17 age group.

* operated by a child welfare organization

** outside purchased care.

Table 5.3: Perceived quality of friendships by placement setting

Age Group		CAS	ON		CAS	ON
		10-15	10-15		16-17	16-17
Average quality of friendships score	Foster home*		3.4	Foster home*		3.4
	Foster home**		3.2	Group home**		3.0
	Group home**		3.1	Other		3.0
	Kinship care		3.4	Independent living		--
	Group home*		3.2	Foster home**		3.4
	Overall		3.3	Overall		3.2

Note: The Friendships scale is a two-item, three-point scale, reported by the young person. The items are: “I have many friends” and “I get along easily with others my age.” Response choices are: False or mostly false, scored 0; Sometimes false or sometimes true, scored 1; True or mostly true, scored 2. The possible range of scores is from 0 to 4, with a higher score indicating a greater number of positive relationships with friends. This scale applies only to young people in the 10-17 age group.

* operated by a child welfare organization

** outside purchased care.

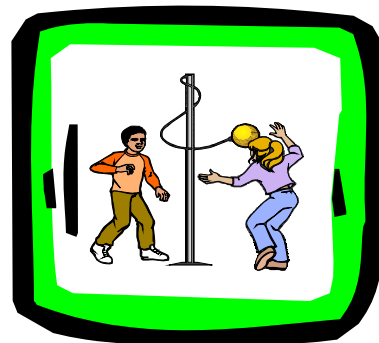


Figure 5.4: Total happiness score by placement setting.

Age Group		CAS	ON		CAS	ON
		10-15	10-15		16-17	16-17
Average happiness score	Foster home*		4.4	Foster home*		4.4
	Foster home**		4.5	Group home**		3.7
	Group home**		3.7	Other		4.2
	Kinship care		4.6	Independent living		--
	Group home*		3.7	Foster home**		4.2
	Overall		4.3	Overall		4.1

Note: The General Happiness scale is a two-item, four-point scale, reported by the young person. The items are: “In general, I am happy with how things are for me in my life now” and “The next five years look good to me.” Response choices are: Strongly disagree, scored 0; Disagree, scored 1; Agree, scored 2; Strongly agree, scored 3. The possible range of scores is from 0 to 6, with a higher score indicating a greater level of happiness and optimism. This scale applies only to young people in the 10-17 age group.

* operated by a child welfare organization

** outside purchased care.

Table 5.5: Percentage of young people who responded “Most of the time” or “Often” to Hope Scale items by placement setting and total Hope Scale score by placement setting and overall.

Age Group		CAS	ON		CAS	ON
		10-15	10-15		16-17	16-17
I think I'm doing pretty well	Foster home*		89%	Foster home*		84%
	Foster home**		88%	Group home**		77%
	Group home**		77%	Other		70%
	Kinship care		82%	Independent living		--
	Group home*		65%	Foster home**		82%
I can think of many ways to get the things in life that are most important to me	Foster home*		79%	Foster home*		84%
	Foster home**		78%	Group home**		79%
	Group home**		73%	Other		69%
	Kinship care		77%	Independent living		--
	Group home*		75%	Foster home**		79%
I am doing just as well as other kids my age	Foster home*		77%	Foster home*		76%
	Foster home**		78%	Group home**		67%
	Group home**		57%	Other		59%
	Kinship care		90%	Independent living		--
	Group home*		58%	Foster home**		70%
When I have a problem, I can come up with lots of ways to solve it.	Foster home*		59%	Foster home*		63%
	Foster home**		61%	Group home**		55%
	Group home**		47%	Other		61%
	Kinship care		71%	Independent living		--
	Group home*		54%	Foster home**		64%
I think the things I have done in the past will help me in the future	Foster home*		66%	Foster home*		68%
	Foster home**		62%	Group home**		61%
	Group home**		50%	Other		61%
	Kinship care		69%	Independent living		--
	Group home*		47%	Foster home**		67%
Even when others want to quit, I know that I can find ways to solve problems	Foster home*		61%	Foster home*		61%
	Foster home**		54%	Group home**		54%
	Group home**		48%	Other		52%
	Kinship care		59%	Independent living		--
	Group home*		58%	Foster home**		61%
Average Hope score	Foster home*		13.0	Foster home*		12.9
	Foster home**		12.7	Group home**		12.0
	Group home**		11.2	Other		11.8
	Kinship care		13.5	Independent living		--
	Group home*		11.2	Foster home**		12.9
	Overall		12.6	Overall		12.5

Note: The Hope Scale is a six-item, four-point scale, reported by the young person. Items are as indicated in Table 5.5. Response choices are: Never, scored 0; Sometimes, scored 1; Often, scored 2; Always, scored 3. The possible range of scores is from 0 to 18, with a higher score indicating a greater level of hopefulness. These questions apply only to young people in the 10-17 age group.

* operated by a child welfare organization

** outside purchased care.

Table 5.6: Percentage of young people who responded “Most of the time” or “Often” to Active Coping Scale items by placement setting and total Active Coping Scale score by placement setting and overall.

Age Group		CAS	ON			CAS	ON
		10-15	10-15			16-17	16-17
I do things to make my problem better	Foster home*		66%	Foster home*		63%	
	Foster home**		57%	Group home**		47%	
	Group home**		44%	Other		54%	
	Kinship care		74%	Independent living		--	
	Group home*		67%	Foster home**		60%	
I think about different ways of solving my problem	Foster home*		58%	Foster home*		54%	
	Foster home**		58%	Group home**		47%	
	Group home**		43%	Other		54%	
	Kinship care		60%	Independent living		--	
	Group home*		56%	Foster home**		58%	
I take action to improve the situation	Foster home*		55%	Foster home*		58%	
	Foster home**		49%	Group home**		50%	
	Group home**		40%	Other		57%	
	Kinship care		54%	Independent living		--	
	Group home*		56%	Foster home**		62%	
I try to learn more about what is causing my problem	Foster home*		46%	Foster home*		48%	
	Foster home**		45%	Group home**		35%	
	Group home**		37%	Other		48%	
	Kinship care		47%	Independent living		--	
	Group home*		26%	Foster home**		42%	
Total Active Coping score	Foster home*		7.1	Foster home*		7.2	
	Foster home**		6.8	Group home**		6.4	
	Group home**		6.1	Other		7.1	
	Kinship care		7.6	Independent living		--	
	Group home*		6.6	Foster home**		7.0	
	Overall		7.0	Overall		6.9	

Note: The Active Coping scale is a four-item, four-point scale, reported by the young person. Items are as indicated in Table 5.6. Response choices are: Never, scored 0; Sometimes, scored 1; Often, scored 2; Always, scored 3. The possible range of scores is from 0 to 12, with a higher score indicating a greater level of hopefulness. These questions are asked only of young people in the 10-17 age group.

* operated by a child welfare organization

** outside purchased care.

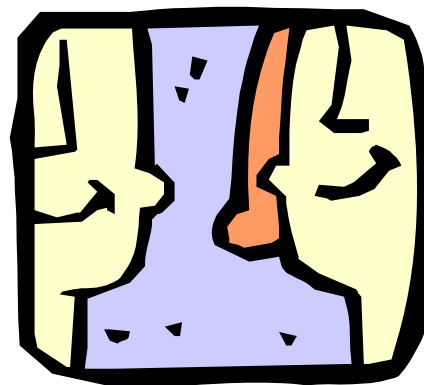


Table 5.7: Percentage of caregivers (or young people) who responded “Always” or “Often” with regard to indicators of the young person’s social presentation.

Age Group		CAS		ON	
		10-15	16-21	10-15	16-21
Social presentation	Keeps himself/herself clean			81%	87%
	Takes adequate care of his/her skin			77%	85%
	Personal appearance gives people the impressions that he/she takes care of himself/herself*			88%	86%
	Wears suitable clothes			92%	89%
	People can understand what he/she is saying			88%	89%
	Is polite with friends/adults			84%	85%
	Do you know how to adjust your behaviour and conversation appropriately to different situations?***			--	87%

*Asked only of 10 to 17 year olds

** Asked only of 18-21 year olds

Table 5.8: Percentage of caregivers who responded “Always” or “Often” with regard to indicators of the child’s social presentation.

Age Group		CAS			ON		
		0-2	3-4	5-9	0-2	3-4	5-9
Social presentation	Promptly changed when wet or dirty				88%	--	--
	Bathed regularly				68%	--	--
	Skin and hair are cared for appropriately				89%	--	--
	Dressed appropriately				89%	100%	99%
	Appears well cared for				--	100%	99%
	Makes himself/herself understood by people outside the immediate family				--	57%	80%
	Says please, thank you, excuse me, etc.				--	70%	82%

*Asked only of 0-9 year olds



Table 5.9: Attachment to at least one caregiver by placement setting.

Age Group		CAS	ON			CAS		ON	
		0-4	0-4			5-9	10-15	5-9	10-15
Foster home*	Definitely attached		92%	Foster home*	Definitely attached			81%	77%
	Some attachment		7%		Some attachment			16%	21%
	Little or no attachment		1%		Little or no attachment			3%	2%
Foster home**	Definitely attached		94%	Foster home**	Definitely attached			70%	70%
	Some attachment		6%		Some attachment			26%	26%
	Little or no attachment		0%		Little or no attachment			4%	4%
Kinship care	Definitely attached		97%	Group home**	Definitely attached			41%	43%
	Some attachment		3%		Some attachment			49%	42%
	Little or no attachment		0%		Little or no attachment			11%	15%
Customary care	Definitely attached		92%	Kinship care	Definitely attached			93%	85%
	Some attachment		8%		Some attachment			7%	15%
	Little or no attachment		0%		Little or no attachment			0%	0%
Group home**	Definitely attached		33%	Group home*	Definitely attached			70%	34%
	Some attachment		67%		Some attachment			30%	45%
	Little or no attachment		0%		Little or no attachment			0%	21%

* operated by a child welfare organization

** outside purchased care.

Table 5.10: Level of perceived mastery reported by young adults.

Age Group		CAS	ON
		18-21	18-21
Average perceived mastery score	Foster home*		11.0
	Group home**		--
	Other		14.1
	Independent living		15.7
	Foster home**		--
	Overall		15.3

Note: The Perceived Mastery scale is a seven-item, four-point scale, reported by the young adult. An example item is: "What happens to me in the future depends on me." Response choices are: Strongly disagree, scored 0; Disagree, scored 1; Agree, scored 2; Strongly agree, scored 3. Five of the seven items are reverse coded. The possible range of scores is from 0 to 21, with a higher score indicating a greater degree of mastery perceived by the young person. These questions are asked only of young people in the 18-21 age group.

* operated by a child welfare organization

** outside purchased care.

Table 5.11: Strengths and Difficulties Questionnaire by placement setting and overall.

Age Group		CAS	ON		CAS	ON
		10-15	10-15		16-17	16-17
Pro-social Score	Foster home*		8.1	Foster home*		7.8
	Foster home**		7.7	Group home**		6.8
	Group home**		6.5	Other		6.8
	Kinship care		8.6	Independent living		--
	Group home*		6.7	Foster home**		7.6
	Overall		7.8	Overall		7.4
Emotional Symptoms Score	Foster home*		2.5	Foster home*		2.6
	Foster home**		2.8	Group home**		3.3
	Group home**		3.5	Other		3.5
	Kinship care		2.4	Independent living		--
	Group home*		3.8	Foster home**		2.3
	Overall		2.8	Overall		2.9
Hyperactivity Score	Foster home*		4.9	Foster home*		4.1
	Foster home**		5.1	Group home**		5.1
	Group home**		6.3	Other		5.4
	Kinship care		4.0	Independent living		--
	Group home*		5.5	Foster home**		4.5
	Overall		5.1	Overall		4.5
Conduct Problems Score	Foster home*		2.4	Foster home*		2.3
	Foster home**		2.7	Group home**		3.3
	Group home**		3.8	Other		3.5
	Kinship care		1.6	Independent living		--
	Group home*		3.6	Foster home**		2.5
	Overall		2.6	Overall		2.7
Peer Relation Problems Score	Foster home*		2.3	Foster home*		2.3
	Foster home**		2.7	Group home**		3.4
	Group home**		3.7	Other		2.6
	Kinship care		1.6	Independent living		--
	Group home*		3.3	Foster home**		2.4
	Overall		2.6	Overall		2.7
Total Difficulties Score	Foster home*		12.1	Foster home*		11.4
	Foster home**		13.3	Group home**		15.0
	Group home**		17.3	Other		15.4
	Kinship care		9.5	Independent living		--
	Group home*		16.3	Foster home**		11.7
	Overall		13.1	Overall		12.8

Note: The Pro-social scale is a five-item, three-point scale, reported by the caregiver. A sample item is: "Shares readily with other youth, for example books, games, food." Response choices are: Not true, scored 0; Somewhat true, scored 1; True, scored 2. The possible range of scores is from 0 to 10, with a higher score indicating a greater amount of pro-social behaviours.

The Emotional Symptoms scale is a five-item, three-point scale reported by the caregiver. A sample item is: "Often unhappy, depressed, or tearful." Response choices are: Not true, scored 0; Somewhat true, scored 1; True, scored 2. The possible range of scores is from 0 to 10, with a higher score indicating a greater amount of emotional symptoms.

The Hyperactivity scale is a five-item, three-point scale reported by the caregiver. A sample item is: "Easily distracted, concentration wanders." Response choices are: Not true, scored 0; Somewhat true, scored 1; True, scored 2. Two items are reverse coded. The possible range of scores is from 0 to 10, with a higher score indicating a greater degree of hyperactivity.

The Conduct Problems scale is a five-item, three-point scale reported by the caregiver. A sample item is: "Often loses temper." Response choices are: Not true, scored 0; Somewhat true, scored 1; True, scored 2. The possible range of scores is from 0 to 10, with a higher score indicating a greater number of behaviours associated with conduct problems.

The Peer Relation Problems scale is a five-item, three-point scale reported by the caregiver. A sample item is: "Would rather be alone than with other youth." Response choices are: Not true, scored 0; Somewhat true, scored 1; True, scored 2. Two items are reverse coded. The possible range of scores is from 0 to 10, with a higher score indicating a greater level of problems with peers.

The Total Difficulties score is a twenty-item, three-point scale, constructed by adding together the items from the Emotional Symptoms scale, the Hyperactivity scale, the Conduct Problems scale, and the Peer Relation Problems scale. The possible range of scores is from 0 to 40, with a higher score indicating a greater level of overall difficulties.

Internal Assets

The Search Institute has identified the following twenty internal assets as building blocks that help young people grow up healthy, caring, and responsible. Internal assets fall under the following categories: Commitment to Learning, Positive Values, Social Competencies, and Positive Identity. Together with the External Assets (page 16), these make up a young person’s Asset Profile (below).

Table 5.12: Average internal assets by placement setting and overall.

Age Group		CAS		ON			CAS	ON
		5-9	10-15	5-9	10-15		16-21	16-21
Average number of internal assets Possible range: 1-20 (1-16 for 5-9 age group)	Foster home*			10.3	13.4	Foster home*		13.3
	Foster home**			9.5	12.3	Group home**		10.3
	Group home**			7.9	9.6	Other		9.9
	Kinship care			11.3	14.3	Independent living		14.8
	Group home*			8.0	9.9	Foster home**		12.6
	Overall			10.1	12.5	Overall		12.0

* operated by a child welfare organization

** outside purchased care.

Note: The 5-9 age group has a maximum of 16 internal assets, rather than the possible 20 of the 10-21 age group.

Asset Profile

Table 5.13: Asset Profile by placement setting and overall.

Age Group		CAS		ON			CAS	ON
		5-9	10-15	5-9	10-15		16-21	16-21
Asset profile	Foster home*			26.5	27.0	Foster home*		26.3
	Foster home**			26.0	25.4	Group home**		21.5
	Group home**			24.1	20.9	Other		18.5
	Kinship care			27.8	27.8	Independent living		26.9
	Group home*			23.7	20.9	Foster home**		26.1
	Overall			26.4	25.5	Overall		23.8

Note: Possible range of averages for 5-9 age group is 1-36. Possible range for 10-21 age group is 1-40.

* operated by a child welfare organization

** outside purchased care.

