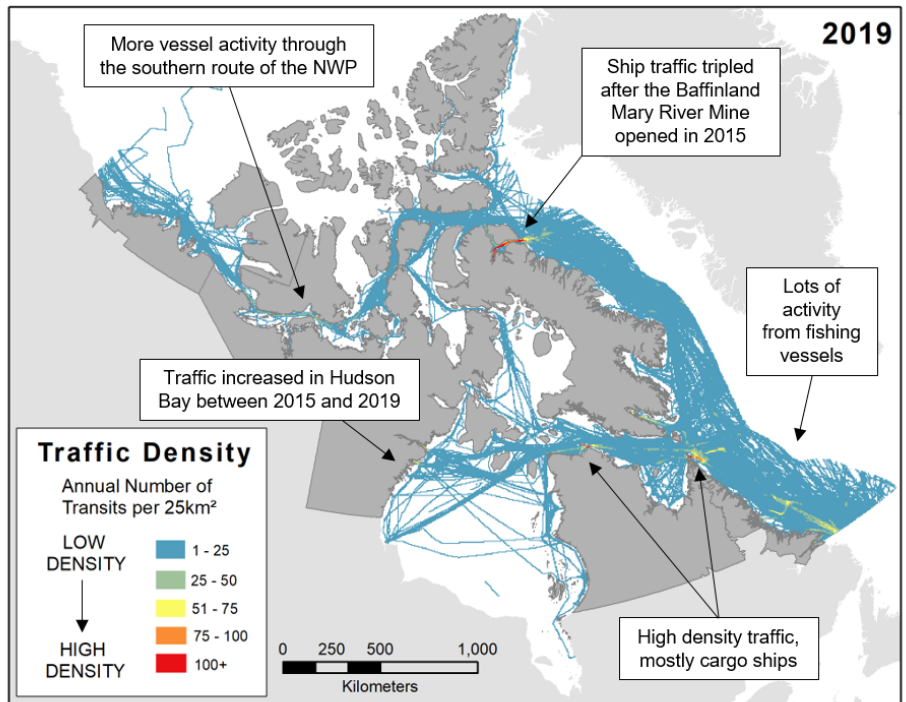
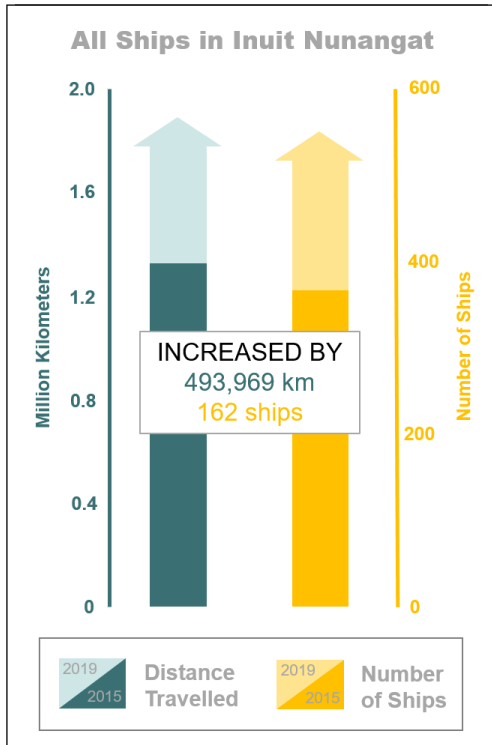


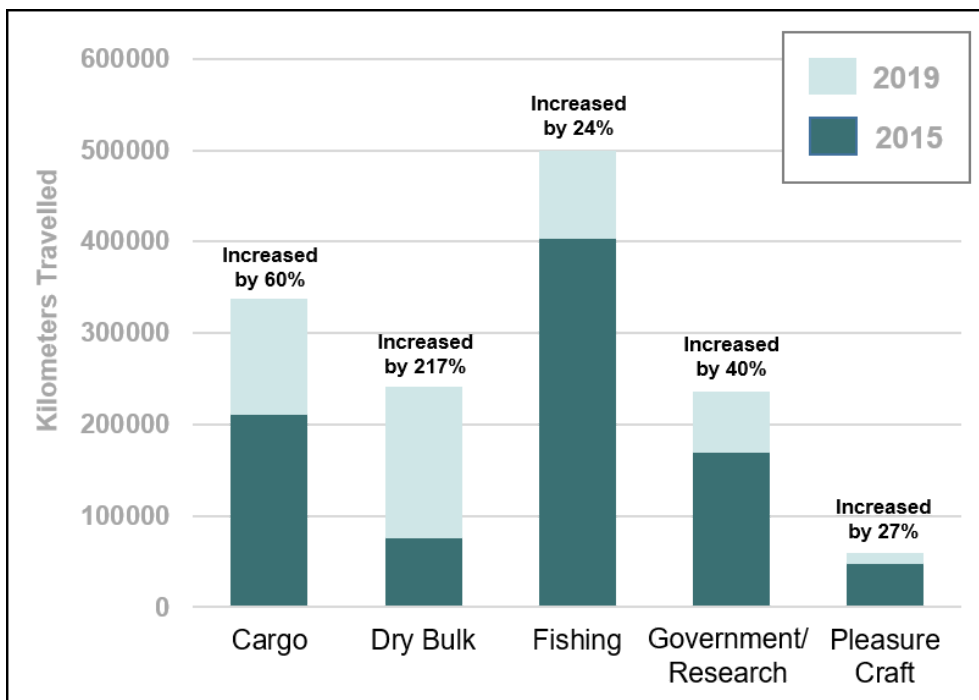
Shipping and Coastal Management in Inuit Nunangat

- Shipping activity has increased by 37% across Inuit Nunangat between 2015 and 2019.
- Inuit wellbeing relies on a healthy and sustainable marine and coastal environment.
- Inuit involvement in shipping and coastal management policy can and must be deepened in a meaningful and self-determined way.

Shipping Patterns in Inuit Nunangat



Traffic density (the number of times a vessel moved through a particular area) by all ships



Summary of shipping data for five ship types in Inuit Nunangat.

- Fishing vessels and cargo ships travelled the furthest distance in 2015 and 2019
- Dry bulk saw the biggest increase in kilometers travelled from 2015 to 2019
- There was a 44% increase in the number of unique ships from 2015 to 2019

Priorities, Gaps, and Recommendations for Shipping and Coastal Management Policy in Inuit Nunangat

Priority 1



Increase Inuit organization and Inuit community capacity

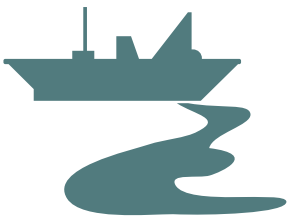
- Provide adequate information to Inuit communities to inform decision-making
 - Improve access to internet across Inuit Nunangat
 - Support and empower Inuit involvement in knowledge creation
 - Increase long-term investment to support organizational capacity
-

Priority 2

Develop effective partnerships between Inuit Nunangat and the Federal Government

- Involve the people who are impacted by policy decisions in influencing policy
 - Co-ordinate community engagement to maximize efficiency and minimize consultation fatigue
 - Take the time to listen to and engage with communities
 - Increase communication with communities about research vessel activity
 - Communicate and provide information in appropriate languages
-

Priority 3



Enhance emergency response capacity

- Increase resources for oil spills and search and rescue response
 - Support the development of marine infrastructure
 - Conduct community and regional training for response to oil spills and emergencies
-

Priority 4

Increase domain awareness & environmental protection

- Make Automatic Identification System (AIS) mandatory for vessels of all sizes
- Develop mandatory greywater disposal regulations that address Inuit concerns
- Require cruise ships to request permission before landing in any area
- Require all vessels to have marine mammal observers on board to monitor vessel operations and wildlife interactions
- Require vessels to have professional pilots onboard to maneuver ships in dangerous areas
- Conduct sufficient charting to ensure safe navigation through Inuit Nunangat waters

