

STUDENT ATTENDANCE AT LIBRARY WORKSHOPS

WHAT THE DATA TELLS US



Richelle Witherspoon – rwithers@unb.ca
& Philip Taber - philip.taber@unb.ca

EMPTINESS

THE LITERATURE

Students:

1. know they will benefit (and they do)
2. intend to attend (then don't)
3. regret not going



motivation

priority

THE FIRST ATTEMPT



Any optional, class-like offering provided by a non-professor/instructor (such as a librarian, library staff, or staff member at a writing or math help centre) outside of course hours for the purpose of providing academic support



[CRICKETS CHIRPING]

THE SECOND ATTEMPT

EMPTINESS





- ### Factors Considered:
- 1.Topic
 - 2.Duration
 - 3.Month
 - 4.Time
 - 5.Location
 - 6.Target Audience
 - 7.Faculty Buy-In
 - 8.Advertising
 - 9.Incentive

TOTAL SUCCESS RATE



60% of all sessions were successful.

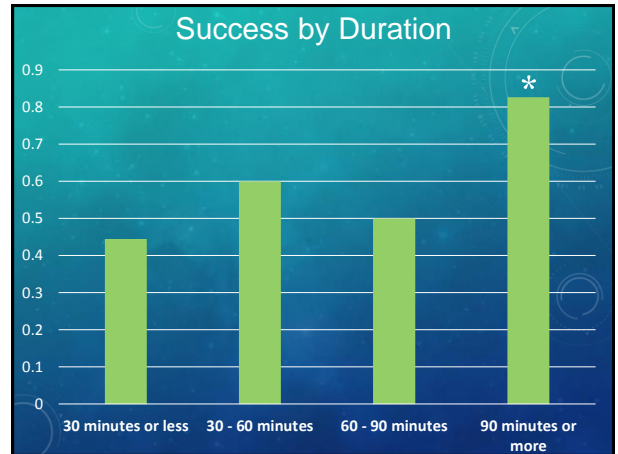
SUCCESS BY TOPIC



No one topic is significant

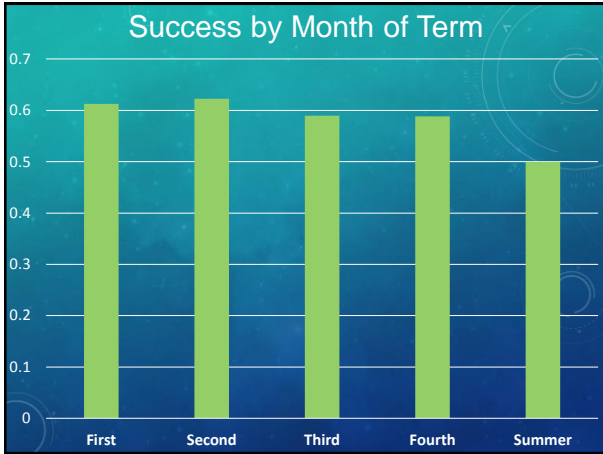
Strong trend ($p=0.11$) indicating preference for specificity

SUCCESS BY DURATION



Sessions of 90 minutes or longer are *statistically significantly* more likely to succeed than shorter sessions ($p < 0.001$)

SUCCESS BY MONTH OF TERM



No effect by month of term

SUCCESS BY TIME OF DAY



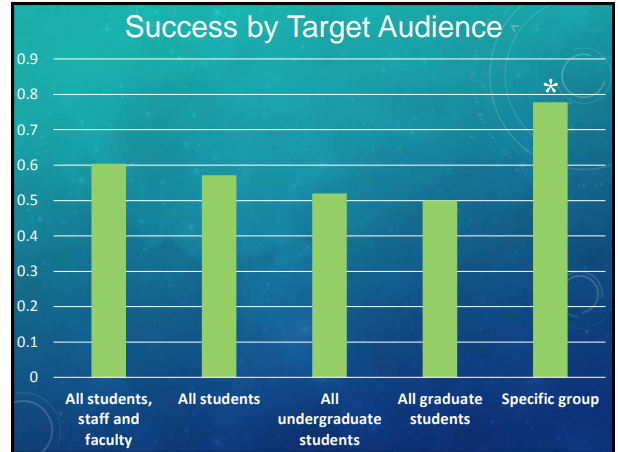
Strong trend ($p = 0.10$) indicating that afternoons are a poor time for workshops

SUCCESS BY LOCATION



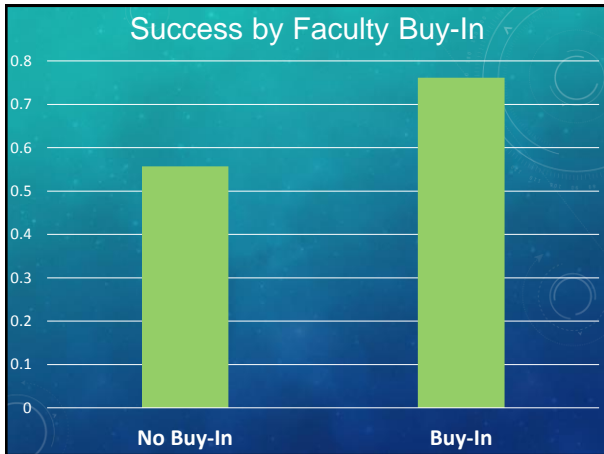
Strong trend ($p = 0.09$) indicating that libraries are poor locations for workshops.

SUCCESS BY TARGET AUDIENCE

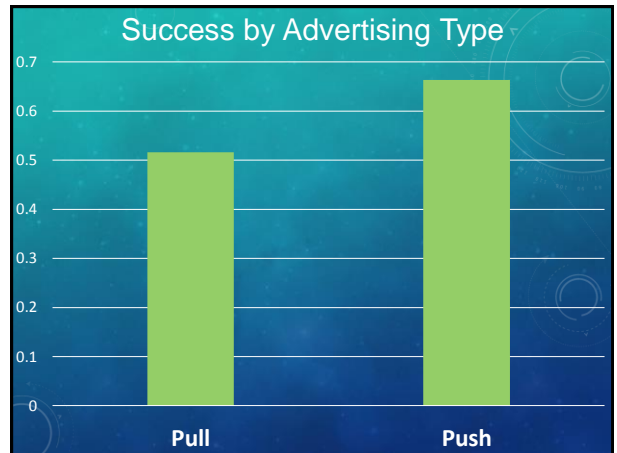


Targeting specific groups is statistically more likely to yield a successful workshop ($p = 0.05$)

SUCCESS BY FACULTY BUY-IN

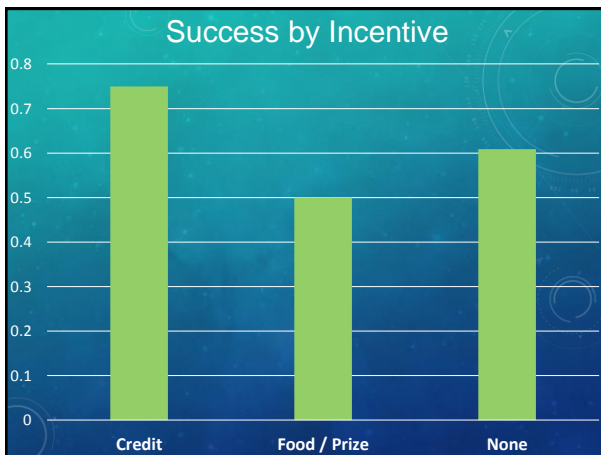


Sessions with faculty or departmental buy in are more likely to succeed ($p = 0.03$).



Strong trend ($p = 0.06$) indicating that “push” advertising is more effective than “pull”.

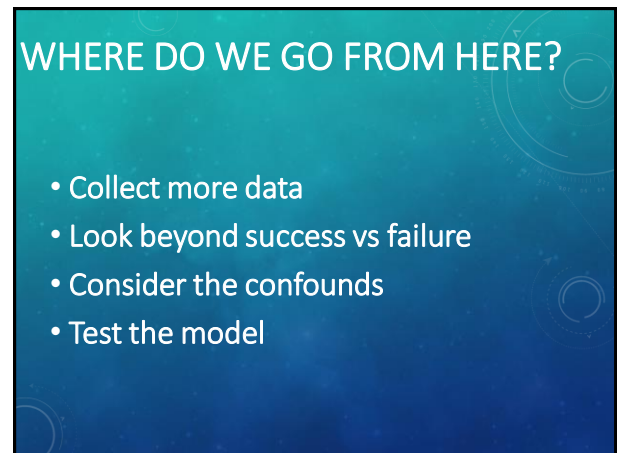
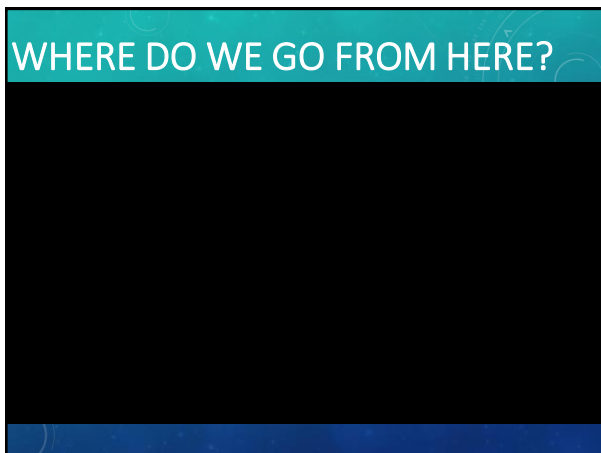
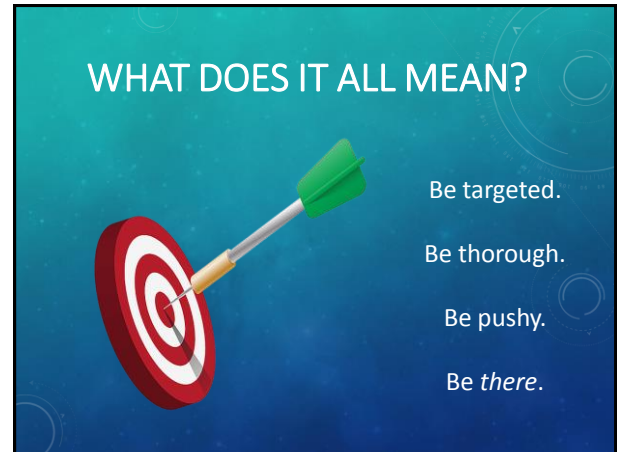
SUCCESS BY INCENTIVE



No effect by incentive
Few responses for credit category

RECAP

Topic	☹️	MAYBE
Duration	😊	YES
Month	☹️	NO
Time	☹️	MAYBE
Location	😊	PROBABLY
Target Audience	😊	YES
Faculty Buy-In	😊	YES
Advertising	😊	PROBABLY
Incentive	☹️	NO





Our Survey
<https://tinyurl.com/ybks7klo>

Richelle Witherspoon – rwithers@unb.ca
& Philip Taber – philip.taber@unb.ca