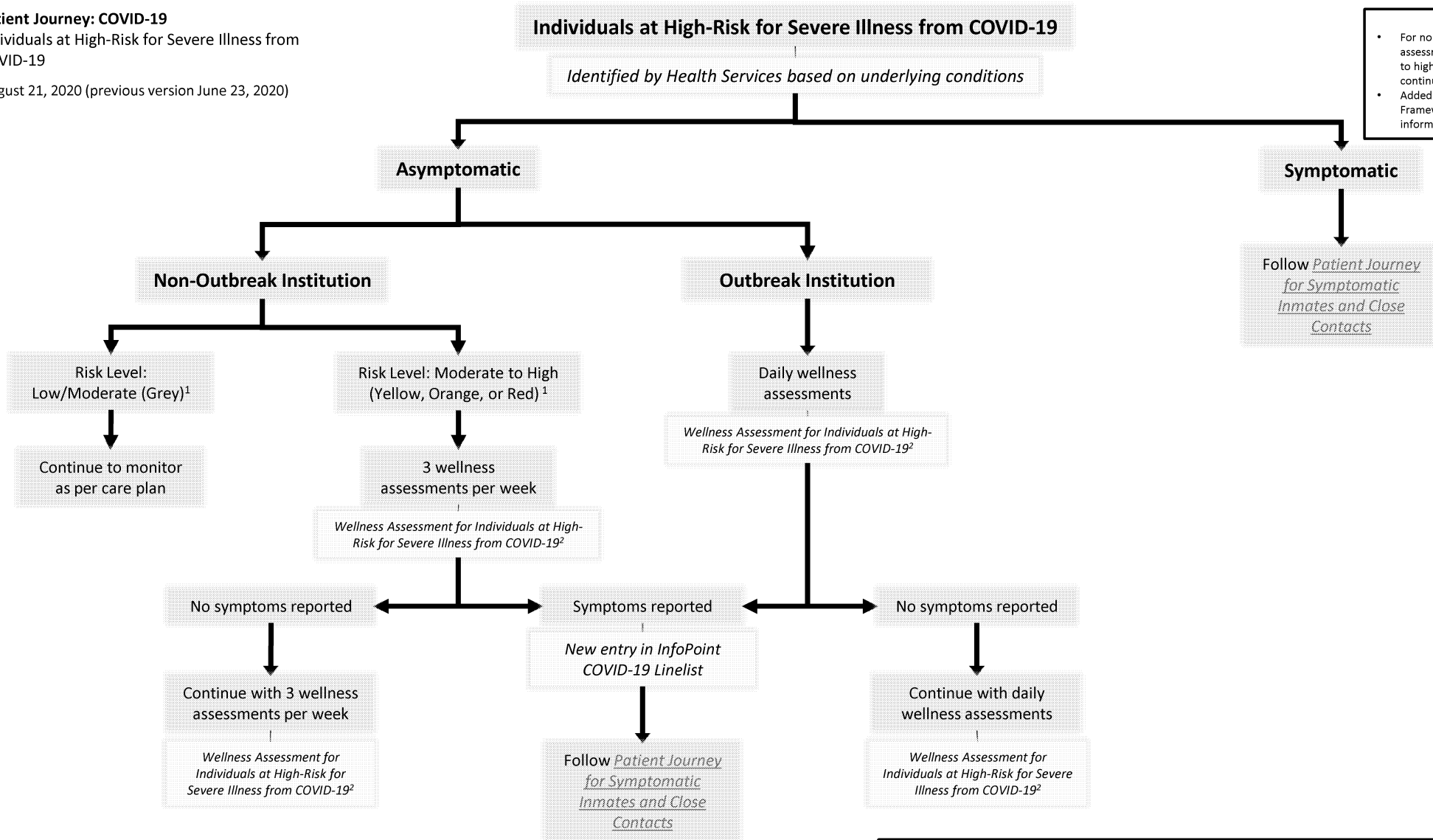


Patient Journey: COVID-19

Individuals at High-Risk for Severe Illness from COVID-19

August 21, 2020 (previous version June 23, 2020)



Updates

- For non-outbreak institutions, wellness assessments only required in moderate to high risk levels ('grey' zone to continue to follow care plan)
- Added link to Risk Management Framework in footnotes for more information on risk levels

1. As per the **Risk Management Framework**.
 2. Upon completion of a wellness assessment for an individual at high-risk for severe illness from COVID-19, the health professional who performed the assessment must initial next to the patient's name on the list provided by NHQ to confirm that the visit took place and mark cases that require further follow-up. Please see **Practice Reminder on Monitoring Individuals at High-Risk for Severe Illness from COVID-19** for more information.