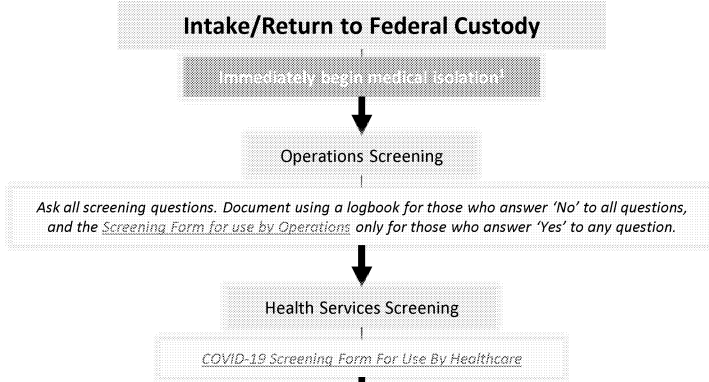
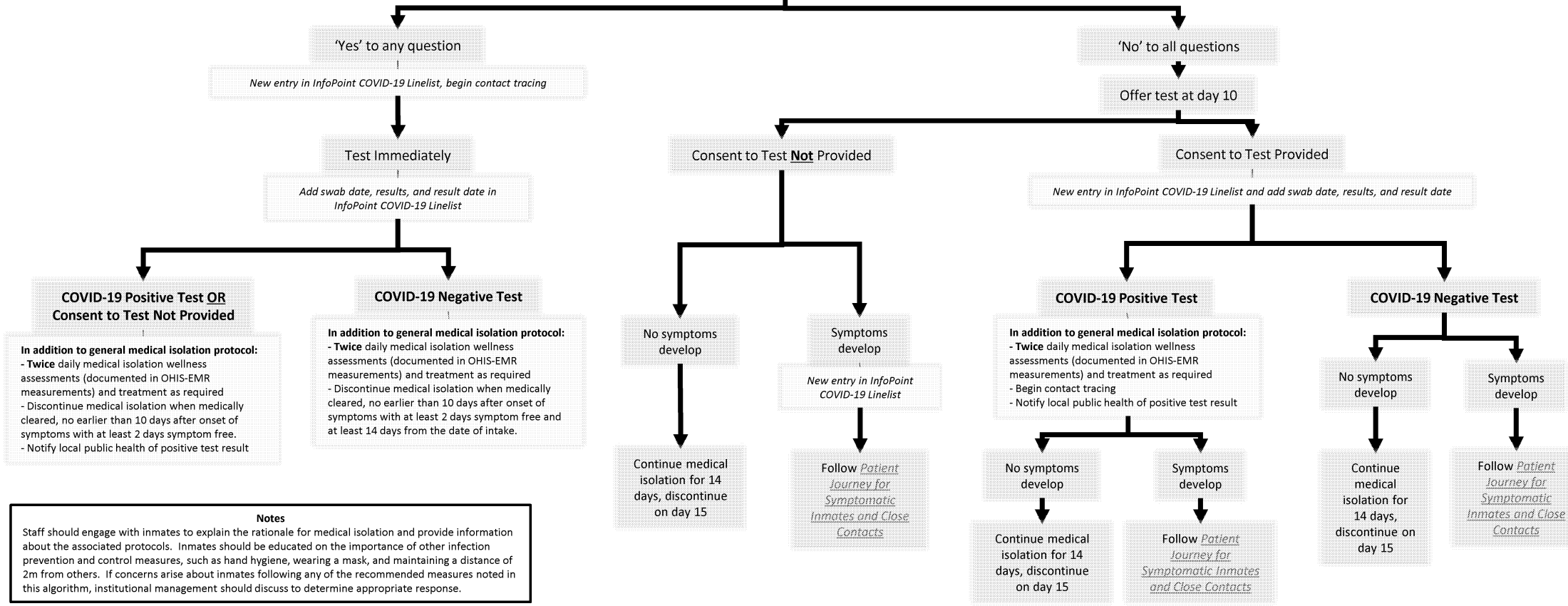


Patient Journey: COVID-19
 New Warrants of Committal and Returns to Federal Custody
 August 21, 2020 (previous version June 23, 2020)

- 1. All medical isolation to include:**
- Inmates to wear mask and maintain distance of 2 metres from others when out of cell
 - Inmates to clean/disinfect all things they touch when outside cell (phone, showers, tables, etc.)
 - Inmates to wash hands prior to leaving cell and upon returning
 - Where possible, in a separate physical area or designated medical isolation cell
 - Daily medical isolation wellness assessments documented in OHIS-EMR measurements
 - Staff to follow PPE Guidance
 - Update medical isolation flag in OMS
 - Update InfoPoint Linelist as necessary (for example, addition of new symptoms or date of recovery)
 - Complete [Form 1620](#) (Medical Isolation Form)



- Updates**
- Added branching for asymptomatic positives to indicate that while in medical isolation, symptoms may develop (refers to the symptomatic algorithm)
 - Added those who are symptomatic and do not consent to be tested to follow the same guidance as those who are positive
 - Operations screening now documented by logbook for those who answer 'no' to all questions, the form is only used if inmate answers 'yes' to any screening question



Notes

Staff should engage with inmates to explain the rationale for medical isolation and provide information about the associated protocols. Inmates should be educated on the importance of other infection prevention and control measures, such as hand hygiene, wearing a mask, and maintaining a distance of 2m from others. If concerns arise about inmates following any of the recommended measures noted in this algorithm, institutional management should discuss to determine appropriate response.