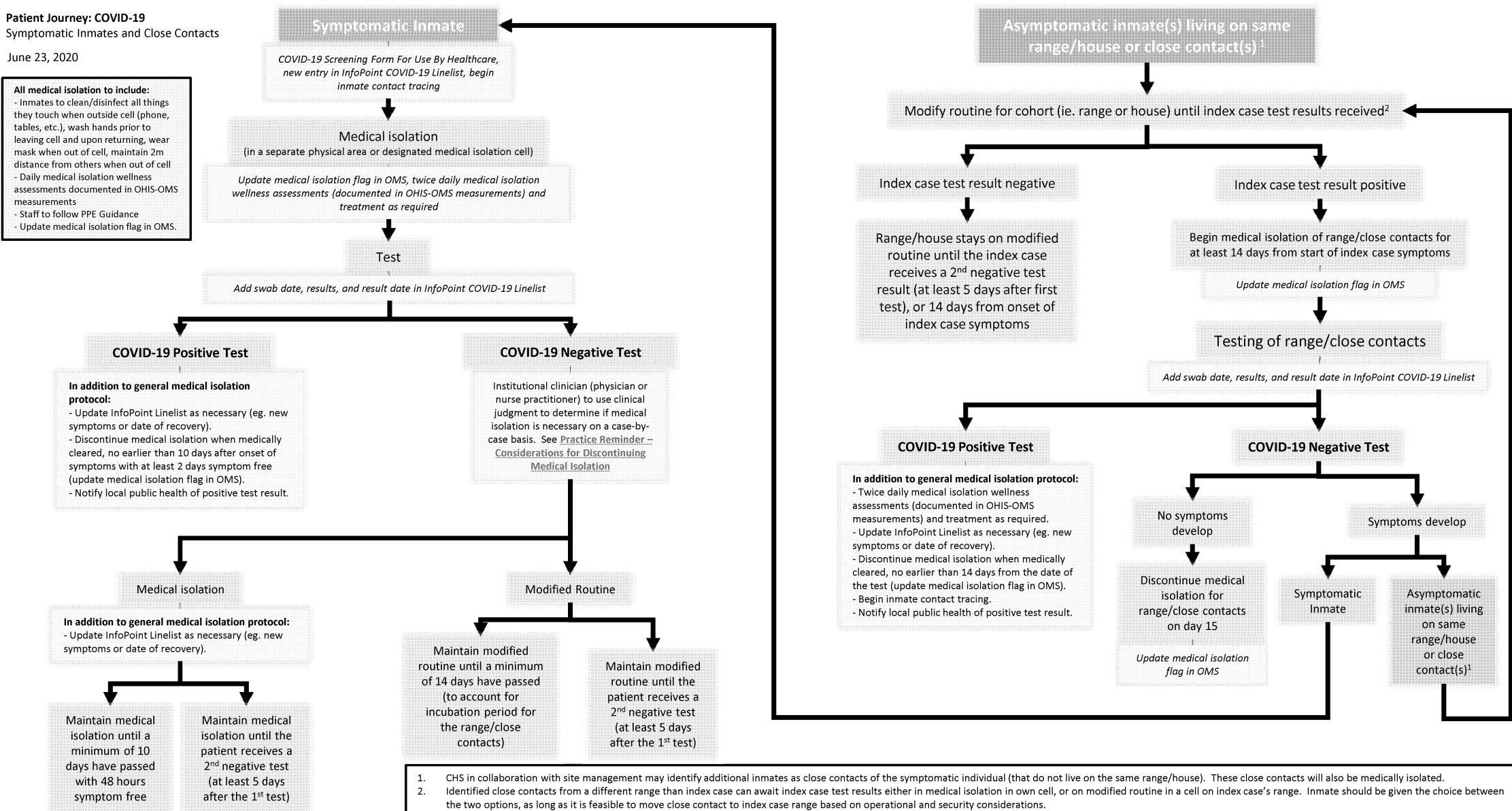


**Patient Journey: COVID-19**  
 Symptomatic Inmates and Close Contacts

June 23, 2020

**All medical isolation to include:**  
 - Inmates to clean/disinfect all things they touch when outside cell (phone, tables, etc.), wash hands prior to leaving cell and upon returning, wear mask when out of cell, maintain 2m distance from others when out of cell  
 - Daily medical isolation wellness assessments documented in OHIS-OMS measurements  
 - Staff to follow PPE Guidance  
 - Update medical isolation flag in OMS.



1. CHS in collaboration with site management may identify additional inmates as close contacts of the symptomatic individual (that do not live on the same range/house). These close contacts will also be medically isolated.  
 2. Identified close contacts from a different range than index case can await index case test results either in medical isolation in own cell, or on modified routine in a cell on index case's range. Inmate should be given the choice between the two options, as long as it is feasible to move close contact to index case range based on operational and security considerations.  
**Note:** Staff should engage with inmates to explain the rationale for medical isolation and provide information about the associated protocols. Inmates should be educated on the importance of other infection prevention and control measures, such as hand hygiene, wearing a mask, and maintaining a distance of 2m from others. If concerns arise about inmates following any of the recommended measures noted in this algorithm, institutional management should discuss to determine appropriate response.