

1
2
3
4
5
6
7
8
9
10
11
12
13
14
15
16
17
18
19
20
21
22
23
24
25
26
27
28
29
30
31
32

Supporting Information for

Impact evaluation of instream bar management using morphodynamic modelling

Qingcheng Yu¹, Colin D. Rennie¹, Jonathan M. Slaney² & Parna Parsapour-Moghaddam^{1,3}

¹Department of Civil Engineering, University of Ottawa, Ottawa, Canada.

²River Engineering Group, City of Calgary, Calgary, Canada.

³Environment and Climate Change Canada, Gatineau, Canada

Contents of this file

Figures Sup1 to Sup3

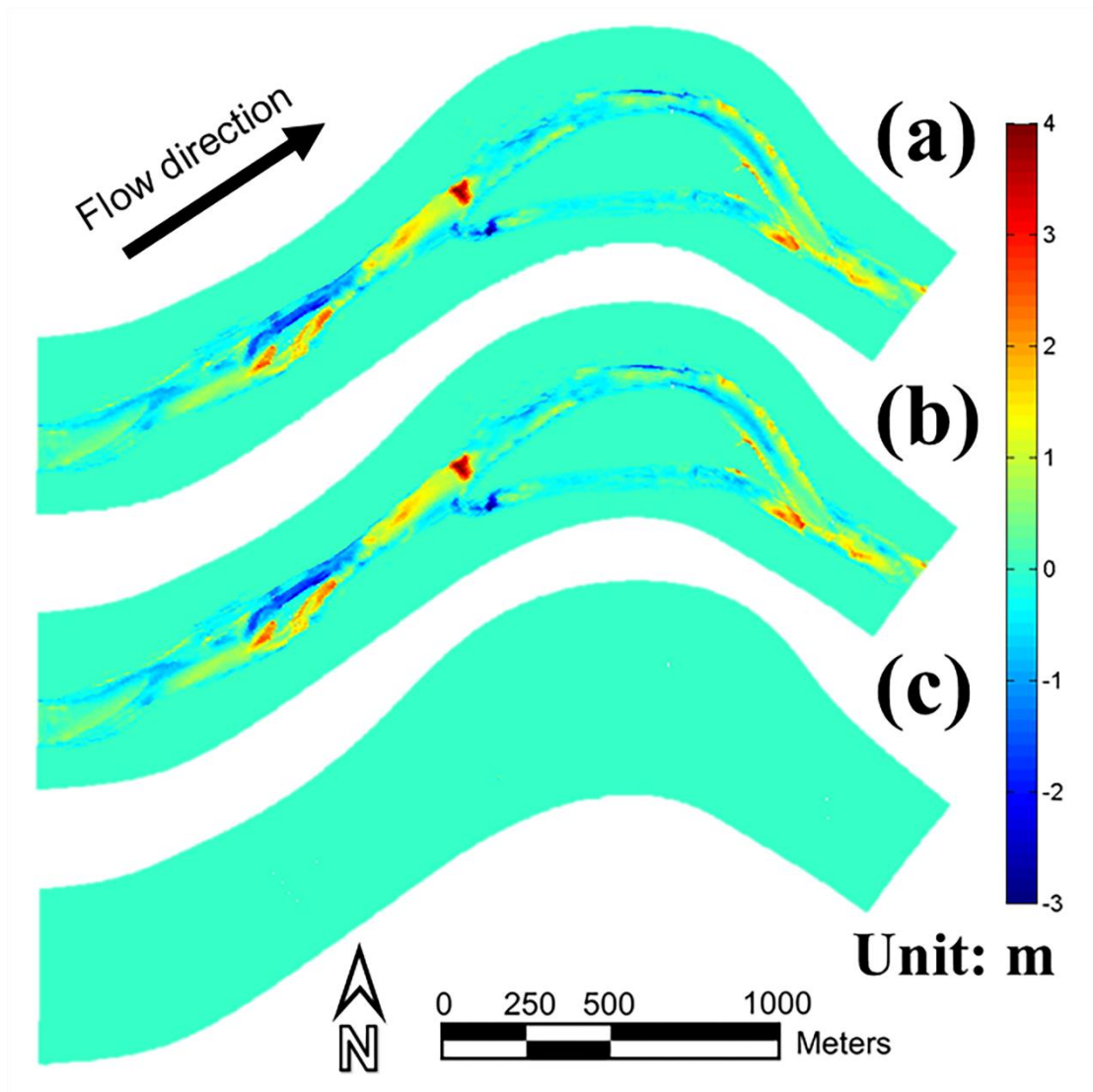
Additional Supporting Information (Files uploaded separately)

N.A.

Introduction

The supporting information provides and archives additional information that is critical to the main manuscript. It contains:

- Sensitivity analysis results of the *MorFac* ;
- Cumulative deposition and erosion map of different bar management plans after the short-term simulation;
- 30-year flood peak level difference between “bar removal” and “do nothing”, and between “bar relocation” and “do nothing”;



33

34 **Figure Sup1.** Cumulative deposition and erosion map of using different $MorFac$ after a
 35 long-term simulation of the “do nothing” plan (a) $MorFac = 1$. (b) $MorFac = 5$. (c) $MorFac$
 36 = 10.

37

38

39

40

41

42

43

44

45

46

47

48

49

50

51

52

53

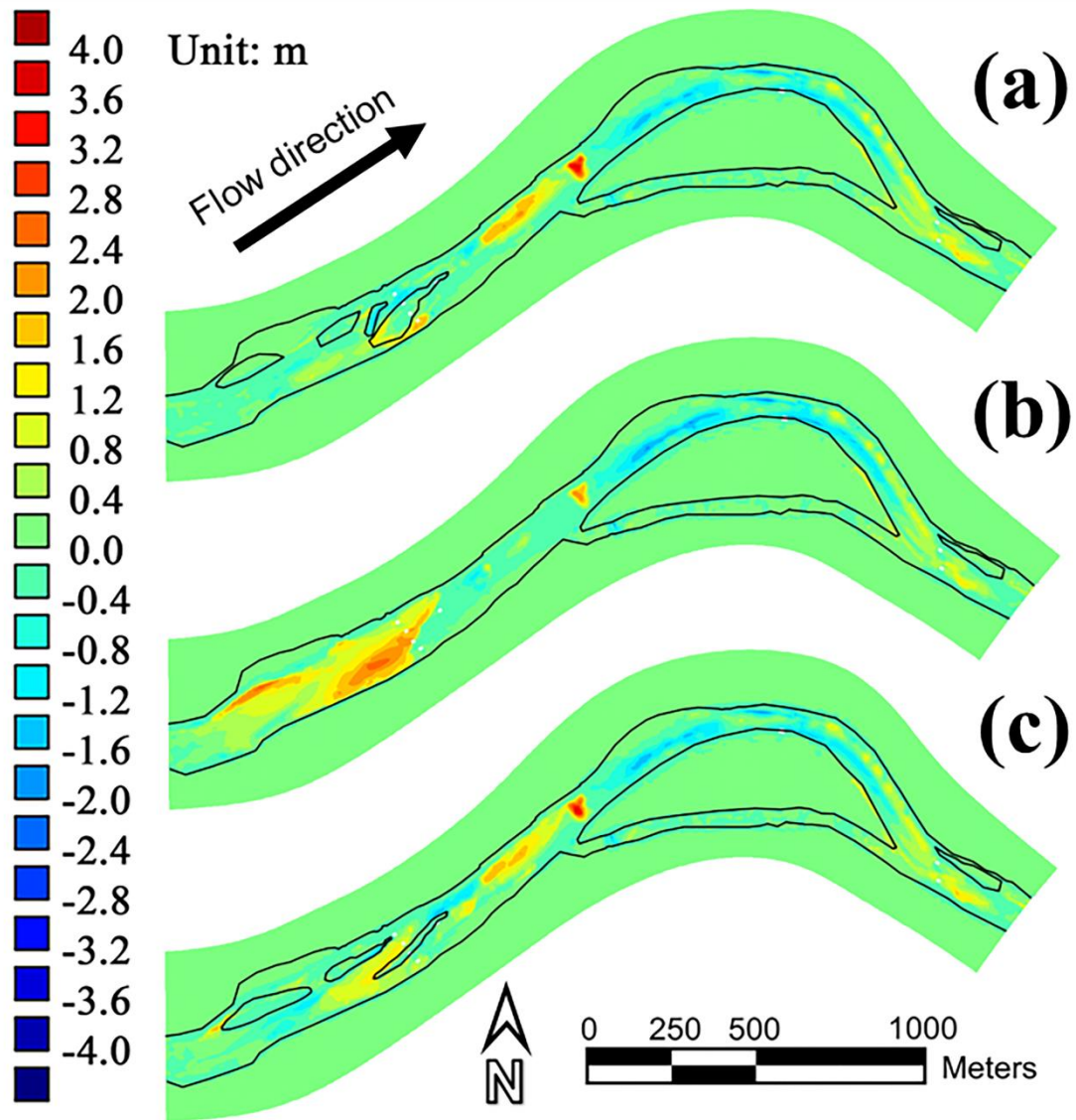
54

55

56

57

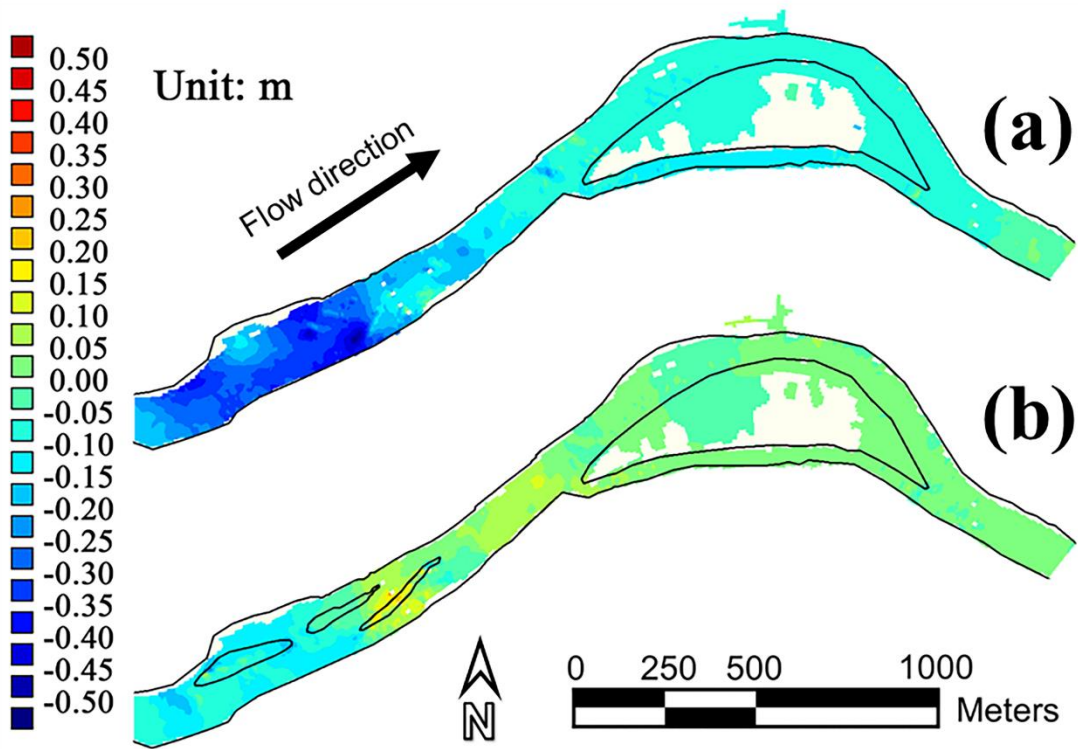
58



49

50 **Figure Sup2.** Cumulative deposition and erosion map of different bar management plans
 51 after the short-term simulation. (a) do nothing; (b) bar removal; (c) bar relocation

52



53

54 **Figure Sup3.** 35-year flood peak level difference (a) between “bar removal” and “do
 55 nothing”, and (b) between “bar relocation” and “do nothing”.