

LOOKING AFTER CHILDREN
In Ontario:
Good Parenting, Good Outcomes
ONTARIO PROVINCIAL REPORT
(YEAR NINE)

Prepared by:
Meagan Miller, OnLAC Research Coordinator
&
Robert Flynn, OnLAC Principal Investigator
Centre for Research on Educational and Community Services,
University of Ottawa

April, 2011



The collaboration and financial support of the Ontario Ministry of Children and Youth Services and the Ontario Association of Children's Aid Societies are gratefully acknowledged.

Preface

This report is designed for use by child welfare organizations as a performance measurement system. The AAR outcome data available in this report should assist child welfare organizations in the development of an internal evaluation program. The AAR findings are intended to help supervisors, program managers, executive directors and board members within child welfare organizations monitor children's outcomes on a regular basis (quarterly or annually) by comparing children's and youths' developmental progress with intended goals. A second intended use of the AAR is to inform decision-makers as to possible means of improving the quality and relevance of services on an ongoing basis.

***Note:** The AAR findings presented in this report must be reviewed and interpreted carefully by child welfare organizations before new policies and services are implemented.*

This report is also designed to provide policy-makers with accurate, up-to-date knowledge of system-wide outcomes thereby fulfilling an accountability function and a guiding function in identifying policies and practices that promote continuous improvements in child welfare policies and practices.

The acronym 'CAS' appearing in the report represents the data for the specific child welfare organization for which the report was prepared. 'ON' represents the Ontario sample. 'FH' and 'GH' are used to represent foster home and group home, respectively.

A double hyphen (- -) in this report indicates that there was no data collected on a specific variable for a specific group. Clarification is noted, where possible. Percentages were rounded.

Individual agency reports were generated for datasets with 20 or more young people.

Background Information

The Background Information section of this report provides basic socio-demographic information on the young people in care who completed a Year Eight Assessment and Action Record (AAR), their caregivers, and their child welfare workers.

Who are the young people living in care?

Table 1.1: Gender and age of young people who completed a Year Eight AAR, and language of the AAR conversation.

Age Group Sample Size		CAS				ON			
		0-4 N =	5-9 N =	10-15 N =	16-21 N =	0-4 N = 918	5-9 N = 1064	10-15 N = 3364	16-21 N = 1744
Gender	Male					55%	58%	57%	50%
	Female					45%	42%	44%	50%
Age	Mean					2.1	7.3	13.0	16.6
	Median					2.0	8.0	13.0	16.0
Language	English					98%	99%	98%	98%
	French					2%	1%	2%	2%
	First Nations					0%	0%	0%	0.1%
	Other					0%	0.1%	0.1%	0.1%

Table 1.2: Percentage of young people who completed a Year Eight AAR by legal status.

Age Group		CAS				ON			
		0-4	5-9	10-15	16-21	0-4	5-9	10-15	16-21
Legal status	Crown Ward, with access					5%	37%	69%	73%
	Crown Ward, no access					29%	28%	17%	9%
	Society Ward					25%	16%	8%	5%
	Temporary care agreement					5%	3%	1%	0.2%
	Interim care and custody					31%	13%	4%	2%
	Extended care and maintenance					--	--	--	9%
	Other					4%	3%	1%	1%

In what settings do the young people live?

Table 1.3: Percentage of young people in Ontario in different placement settings.

Age Group		CAS				ON			
		0-4	5-9	10-15	16-21	0-4	5-9	10-15	16-21
Placement setting	Foster home*					79%	62%	53%	34%
	Foster home**					7%	17%	18%	13%
	Group home**					0.4%	2%	15%	18%
	Kinship care					10%	15%	10%	6%
	Group home*					0.1%	2%	3%	4%
	Children's mental health residential facility					0%	0.7%	1%	2%
	Regular hospital (short-term)					0%	0%	0%	0%
	Customary care					1%	1%	0.2%	0.1%
	Custody/Detention facility					0%	0%	0.4%	1%
	With birth parents					0%	0%	0.1%	1%
	With relatives (not in care)					0.1%	0%	0.1%	2%
	Psychiatric facility					0%	0%	0%	0.1%
	Adoption probation					1%	0.2%	0%	0.1%
	Independent living					--	--	--	7%
Other					0%	0.1%	0.5%	13%	

As illustrated in Table 1.3, the top five placement settings for the Ontario population of children aged zero to four years are: foster home operated by child welfare organization, kinship care, foster home – outside purchased care, customary care, and adoption probation. Together, these five placement settings are home to 98 percent of Ontario children in care aged zero to four years.

The top five placement settings for the Ontario population of young people aged five to nine years are: foster home operated by child welfare organization, foster home – outside purchased care, kinship care, group home – outside purchased care, and group home operated by child welfare organization. Together, these five placement settings are home to 98 percent of Ontario young people in care aged five to nine years.

The top five placement settings for the Ontario population of young people aged 10 to 15 years are: foster home operated by child welfare organization, foster home – outside purchased care, group home – outside purchased care, kinship care, and group home operated by child welfare organization. Together, these five placement settings are home to 99 percent of Ontario young people in care aged five to nine years.

The top five placement or residential settings for the Ontario population of young people aged 16 to 21 years are: foster home operated by child welfare organization, group home – outside purchased care, other, foster home – outside purchased care, and independent living.

Together, these five placement or residential settings are home to 85 percent of Ontario young people in care aged 16 to 21 years.

The environments that the Ontario young people live in are varied, with 45 percent living in urban areas with a population of 100,000 or greater, and 29 percent living in urban areas with a population of less than 30,000 to 99,999. Twenty-five percent of young people live in rural areas, while one percent live in remote Northern areas and less than one percent live on First Nations reserves.

The language spoken most often in the homes of the young people is English, at 89 percent. Five percent of young people speak French most often, 0.8 percent speak a First Nations' language, and 1.7 percent report speaking another language at home. (Note: respondents could select more than one language.)

Ninety-one percent of homes are smoke-free, while nine percent of respondents report that smoking occurs in the home either daily or occasionally.

What adversities have these young people faced?

Table 1.4: Reasons for admission to care.

Age Group		CAS				ON			
		0-4	5-9	10-15	16-21	0-4	5-9	10-15	16-21
Reasons for admission to care	Physical harm					27%	30%	31%	25%
	Sexual harm					3%	6%	10%	11%
	Neglect					65%	74%	66%	46%
	Emotional harm					34%	41%	40%	34%
	Abandonment/Separation					10%	13%	18%	21%
	Problematic behaviour					2%	9%	19%	28%
	Domestic violence					22%	36%	25%	14%
Other					25%	15%	12%	12%	

Note: respondents could select more than one option.

Table 1.5: Adverse life experiences since birth.

Age Group		CAS				ON			
		0-4	5-9	10-15	16-21	0-4	5-9	10-15	16-21
Adverse life experiences	Death of a birth parent					2%	5%	11%	10%
	Death of brother or sister					1%	3%	3%	4%
	Death of relative or close friend					4%	11%	14%	32%
	Divorce or separation of birth parents					29%	46%	50%	39%
	Birth mother's abuse of drugs or alcohol					45%	53%	44%	31%
	Birth father's abuse of drugs or alcohol					31%	38%	34%	26%
	Violence between parents					36%	49%	41%	31%
	Birth mother spent time in jail					12%	14%	11%	10%
	Birth father spent time in jail					21%	27%	21%	22%
	Serious physical illness of birth mother					2%	5%	6%	11%
	Serious physical illness of birth father					1%	3%	3%	7%
	Serious psychiatric disturbance of birth mother					13%	18%	19%	18%
	Serious psychiatric disturbance of birth father					6%	7%	8%	7%
	Physical abuse					7%	21%	29%	31%
	Sexual abuse					2%	7%	15%	17%
	Emotional abuse					18%	42%	47%	38%
	Neglect					48%	74%	68%	41%
Severe poverty					15%	29%	24%	18%	

Note: respondents could select more than one option.

Who looks after the young people?

CAS Staff

Table 1.6: Basic demographic information on child welfare worker.

Age Group		CAS				ON			
		0-4	5-9	10-15	16-21	0-4	5-9	10-15	16-21
Gender of child welfare worker	Male					6%	10%	13%	14%
	Female					94%	90%	87%	86%
Length of time working with this child	Less than one year					47%	33%	28%	27%
	One to three years					49%	51%	44%	41%
	Four to nine years					2%	14%	25%	28%
	10 years or more					2%	2%	3%	5%
Total length of time working in child welfare	Less than one year					5%	5%	4%	4%
	One to three years					21%	19%	15%	14%
	Four to nine years					47%	51%	46%	44%
	10 years or more					27%	26%	35%	39%
Highest level of education achieved by child welfare worker	Less than high school diploma					0.1%	0.1%	0.1%	0.4%
	High school diploma					0.3%	0.3%	0.2%	0.1%
	Trade, vocational, apprenticeship certificate					0%	0.2%	0.2%	0.4%
	Non-university certificate or college diploma					14%	15%	13%	13%
	University certificate or diploma below Bachelor's level					2%	2%	3%	3%
	Bachelor's degree					58%	56%	59%	59%
	University certificate or diploma above Bachelor's level					10%	11%	9%	9%
	Master's degree					17%	14%	16%	16%
Doctoral degree					0%	0%	0.5%	0.4%	
Does child welfare worker speak the young person's primary language?	Yes					99%	99%	99%	99%
	No					1%	1%	1%	1%

Table 1.7: Training child welfare worker has received in Looking After Children

Age Group		CAS				ON			
		0-4	5-9	10-15	16-21	0-4	5-9	10-15	16-21
Total training in Looking After Children	Three days or more (12 hours+)					22%	23%	29%	29%
	Two days (7-12 hours)					61%	59%	55%	55%
	One day (6 hours)					5%	8%	6%	7%
	Less than one full day (less than 6 hours)					5%	4%	3%	3%
	No formal training					7%	6%	7%	5%
Frequency of discussion of AAR in supervision	Very often					21%	22%	24%	27%
	Sometimes					56%	57%	58%	56%
	Almost never					10%	12%	12%	13%
	Not applicable (first AAR completed)					13%	10%	6%	5%

Caregivers

Table 1.8: Basic demographic information on the caregiver.

Age Group		CAS				ON			
		0-4	5-9	10-15	16-17	0-4	5-9	10-15	16-17
Gender	Male					3%	3%	14%	19%
	Female					97%	97%	86%	81%
Years providing foster care, in total	Less than one year					9%	7%	7%	9%
	One to three years					31%	24%	16%	18%
	Four to nine years					34%	40%	39%	33%
	10 years or more					25%	29%	38%	40%
Ethnicity the same or similar to the young person?	Same					46%	48%	49%	47%
	Similar					31%	32%	33%	34%
	Neither the same nor similar					24%	20%	19%	19%
Caregiver's health	Excellent					44%	41%	40%	38%
	Very good					41%	43%	42%	42%
	Good					14%	16%	17%	18%
	Fair					2%	1%	2%	3%
	Poor					0%	0.1%	0.1%	0.2%

Note: The term "caregiver" refers to the adult caregiver who is considered the most knowledgeable about the young person. He or she is the caregiver most actively involved in the young person's care. These questions are asked only of young people in the 0-17 age groups.

Table 1.9: Training caregiver has received in Looking After Children (and other programs)

Age Group		CAS				ON			
		0-4	5-9	10-15	16-17	0-4	5-9	10-15	16-17
Total training in Looking After Children	Three days or more (12 hours+)					22%	24%	25%	23%
	Two days (7-12 hours)					31%	32%	30%	29%
	One day (6 hours)					9%	10%	8%	8%
	Less than one full day (less than 6 hours)					4%	2%	3%	3%
	No formal training					33%	33%	33%	36%
Training in programs other than Looking After Children	PRIDE*					69%	60%	42%	28%
	Agency-specific program					60%	60%	60%	42%
	Foster parent techniques (offered by CEGEP or college)					10%	13%	15%	9%
	Other training program					31%	37%	35%	26%

Note: Respondents were able to choose more than one training program other than Looking After Children

* Parenting Resources for Information, Development, and Education program.

What is the temporal stability associated with different types of placement settings?

This section illustrates the stability associated with the top five placement settings for each age group.

Table 2.1: Measures of temporal stability by placement setting and overall.

Age Group		CAS	ON		CAS	ON		CAS	ON		CAS	ON
		0-4	0-4		5-9	5-9		10-15	10-15		16-17	16-17
Average years in placement	FH-CAS*		1.3	FH-CAS		2.7	FH-CAS		4.5	FH-CAS		4.9
	Kinship		1.4	FH-OPC		2.4	FH-OPC		3.4	GH-OPC		1.9
	FH- OPC**		1.5	Kinship		3.4	GH-OPC		1.8	Other		1.7
	Customary care		1.9	GH-OPC**		2.3	Kinship		4.2	FH-OPC		3.3
	Adoption probation		1.2	GH-CAS*		2.3	GH-CAS		1.5	Independent living		--
	Overall		1.4	Overall		2.7	Overall		3.8	Overall		3.5
Average changes in main caregiver since birth	FH-CAS*		2.6	FH-CAS		3.7	FH-CAS		4.2	FH-CAS		4.4
	Kinship		2.7	FH-OPC		3.7	FH-OPC		4.8	GH-OPC		6.5
	FH- OPC**		2.9	Kinship		2.8	GH-OPC		6.1	Other		6.4
	Customary care		1.5	GH-OPC		5.5	Kinship		3.5	FH-OPC		5.8
	Adoption probation		3.0	GH-CA		4.0	GH-CAS		5.5	Independent living		--
	Overall		2.6	Overall		3.6	Overall		4.6	Overall		5.4
Average changes in place of residence since birth	FH-CAS*		2.9	FH-CAS		4.5	FH-CAS		5.8	FH-CAS		6.2
	Kinship		3.1	FH-OPC		4.3	FH-OPC		6.3	GH-OPC		7.7
	FH- OPC**		3.2	Kinship		4.8	GH-OPC		7.0	Other		9.3
	Customary care		2.7	GH-OPC		4.3	Kinship		5.3	FH-OPC		7.2
	Adoption probation		2.2	GH-CAS		4.7	GH-CAS		7.0	Independent living		--
	Overall		2.9	Overall		4.5	Overall		6.2	Overall		7.2

Note: The above questions are asked only of the 0-17 age groups. "Independent living" as a placement setting appears only in the 18-21 AAR-C2-2006.

Provincial range years in placement overall by age group: 0-4 = 0.8-4.92 years; 5-9 = 0.1-9.9 years; 10-15 = 0.1-15.58 years; 16-21 = 0.8-17.5 years

Provincial range changes in main caregiver since birth by age group: 0-4 = 1-10 caregivers; 5-9 = 1-45 caregivers; 10-15 = 1-99 caregivers; 16-17 = 1-50 caregivers

Provincial range changes in place of residence since birth by age group: 0-4 = 1-13 changes; 5-9 = 1-63 changes; 10-15 = 1-65 changes; 16-17 = 1-99 changes

Table 2.2: Permanency of placement by placement setting.

Age Group		CAS	ON		CAS	ON		CAS	ON		CAS	ON
		0-4	0-4		5-9	5-9		10-15	10-15		16-17	16-17
Young people who are in a permanent placement (as reported by the caregiver)	FH-CAS		23%	FH-CAS		48%	FH-CAS		83%	FH-CAS		86%
	Kinship		61%	FH-OPC		58%	FH-OPC		84%	GH-OPC		56%
	FH- OPC		29%	Kinship		82%	GH-OPC		49%	Other		55%
	Customary care		20%	GH-OPC		52%	Kinship		94%	FH-OPC		83%
	Adoption probation		100%	GH-CAS		57%	GH-CAS		37%	Independent living		--
	Overall		28%	Overall		56%	Overall		78%	Overall		75%
Young people who have a permanency plan	FH-CAS		72%	FH-CAS		72%	FH-CAS		83%	FH-CAS		84%
	Kinship		82%	FH-OPC		72%	FH-OPC		77%	GH-OPC		75%
	FH- OPC		60%	Kinship		88%	GH-OPC		65%	Other		81%
	Customary care		78%	GH-OPC		76%	Kinship		92%	FH-OPC		87%
	Adoption probation		80%	GH-CAS		59%	GH-CAS		70%	Independent living		--
	Overall		72%	Overall		74%	Overall		79%	Overall		82%
Young people who have had "much" continuity of care (as reported by the child welfare worker)	FH-CAS		78%	FH-CAS		80%	FH-CAS		84%	FH-CAS		78%
	Kinship		67%	FH-OPC		82%	FH-OPC		75%	GH-OPC		51%
	FH- OPC		73%	Kinship		90%	GH-OPC		56%	Other		8%
	Customary care		90%	GH-OPC		68%	Kinship		88%	FH-OPC		72%
	Adoption probation		100%	GH-CAS		86%	GH-CAS		45%	Independent living		--
	Overall		77%	Overall		81%	Overall		77%	Overall		59%
All feasible action is being taken to create or maintain a permanent placement (as reported by the child welfare worker)	FH-CAS		99%	FH-CAS		99%	FH-CAS		99%	FH-CAS		100%
	Kinship		99%	FH-OPC		99%	FH-OPC		99%	GH-OPC		98%
	FH- OPC		99%	Kinship		99%	GH-OPC		97%	Other		97%
	Customary care		100%	GH-OPC		100%	Kinship		99%	FH-OPC		99%
	Adoption probation		100%	GH-CAS		100%	GH-CAS		96%	Independent living		--
	Overall		99%	Overall		99%	Overall		99%	Overall		99%

Note: The above questions are asked only of the 0-17 age groups. "Independent living" as a placement setting appears only in the 18-21 AAR-C2-2006.



Quality of Care

Experiences in Care

Table 2.3: Percentage of young people who feel they can talk to different people in their lives.

Age Group		CAS		ON	
		10-15	16-17	10-15	16-17
People who the young people feel they can talk to	Foster mother		71%		50%
	Foster father		49%		32%
	Birth mother		33%		31%
	Birth father		16%		15%
	Brother		27%		25%
	Sister		32%		30%
	Grandparents		28%		24%
	Other relative		22%		21%
	Birth parent's partner		6%		6%
	A friend of the family or a friend's parent		19%		21%
	Teacher		38%		26%
	Coach or leader		12%		10%
	Child welfare worker		62%		56%
	Babysitter		4%		2%
	Boyfriend or girlfriend		12%		30%
Other		31%		29%	
		CAS	ON		
Age Group		10-15	10-15		CAS 16-17
Average number of people the young people feel they can talk to (by placement setting)	FH-CAS		5.3	FH-CAS	5.2
	FH-OPC		5.3	GH-OPC	4.4
	GH-OPC		4.3	Other	4.3
	Kinship		4.9	FH-OPC	5.2
	GH-CAS		4.1	Independent living	--
	Overall		5.1	Overall	4.8

Note: Respondents could select more than one answer. This question above is only asked of 10 to 17 year olds.

Provincial range average number of people the young people feel they can talk to by age group: 10-15 = 1-16 people; 16-17 = 1-14 people.

Table 2.4: Breakdown of placement satisfaction by placement setting and overall.

Age Group		CAS	ON			CAS	ON
		10-15	10-15	16-17	16-17		
Average placement satisfaction score	FH-CAS		10.9	FH-CAS		10.6	
	FH-OPC		10.9	GH-OPC		7.4	
	GH-OPC		7.5	Other		9.9	
	Kinship		11.1	FH-OPC		10.6	
	GH-CAS		7.7	Independent living		--	
	Overall		10.3	Overall		9.7	

Note: Placement satisfaction is a six-item, three-point scale comprised of the following items: “You like living here”, “You feel safe living in this home”, “You would be pleased if you were to live here for a long time”, “You are satisfied with the amount of privacy you have here”, “You have a good relationship with other people with whom you are living” and “Overall, you are satisfied with your current living situation.” The possible responses for each item are as follows: Very little, scored 0; Some, scored 1; A great deal, scored 2. The possible total score range is 0-12, with a higher score indicating greater placement satisfaction. Placement satisfaction is reported by young people in the 10-17 age groups.

Table 2.5: Breakdown of average positive life experiences by placement setting and overall.

Age Group		CAS	ON			CAS	ON
		10-15	10-15	16-17	16-17		
Average number of positive life experiences	FH-CAS		17.4	FH-CAS		16.4	
	FH-OPC		17.5	GH-OPC		14.6	
	GH-OPC		15.3	Other		13.0	
	Kinship		17.7	FH-OPC		16.3	
	GH-CAS		15.3	Independent living		--	
	Overall		17.0	Overall		15.3	

Note: Positive life experiences are opportunities that the young people have had over the last year or two. There are 22 positive life experiences included in the AAR and the young person is asked which of them he/she has experienced. The total possible range of scores is 1-22. Positive life experiences are reported by young people in the 10-17 age groups.

Parenting

Table 2.6: Average feelings toward caregivers by placement setting and overall.

Age Group		CAS	ON		CAS	ON
		10-15	10-15		16-17	16-17
Young person's feelings toward female caregiver	FH-CAS		6.9	FH-CAS		6.5
	FH-OPC		6.8	GH-OPC		5.7
	GH-OPC		5.7	Other		5.7
	Kinship		6.8	FH-OPC		6.4
	GH-CAS		5.4	Independent living		--
	Overall		6.7	Overall		6.2
Young person's feelings toward male caregiver	FH-CAS		6.3	FH-CAS		5.9
	FH-OPC		6.4	GH-OPC		5.2
	GH-OPC		5.3	Other		5.8
	Kinship		6.2	FH-OPC		6.3
	GH-CAS		5.0	Independent living		--
	Overall		6.1	Overall		5.7

Note: The Feelings Toward Caregiver score is a four-item, three-point scale. The items are: "How well do you feel he/she understands you", "How much fairness do you receive from him/her?", "How much affection do you receive from him/her?" and the response choices for these questions are: A great deal, Some, and Very little. The final question is "Overall, how would you describe your relationship with her?" and the response choices are: Very close, scored 2; Somewhat close, scored 1; Not very close, scored 0. The total positive range of scores is 0-8. Higher scores on this scale indicate a greater degree of parental acceptance perceived by the young person. Feelings Toward Caregiver are reported by young people in the 10-17 age groups.

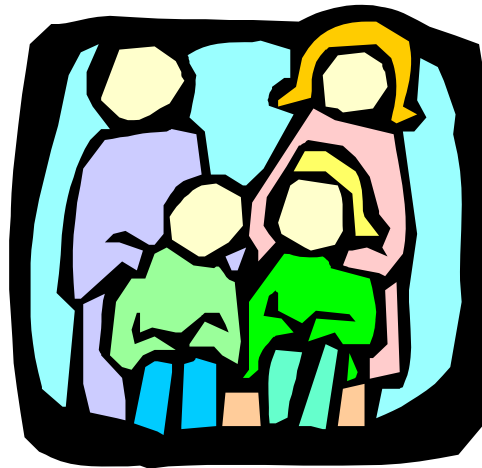


Table 2.7: Parenting scores by placement setting and overall.

Age Group		CAS	ON		CAS	ON		CAS	ON		CAS	ON
		0-4	0-4		5-9	5-9		10-15	10-15		16-17	16-17
Positive Parenting Score	FH-CAS		17.9	FH-CAS		14.6	FH-CAS		15.5	FH-CAS		15.3
	Kinship		16.8	FH-OPC		14.7	FH-OPC		15.5	GH-OPC		15.3
	FH- OPC		17.4	Kinship		14.0	GH-OPC		15.5	Other		14.5
	Customary care		18.6	GH-OPC		17.3	Kinship		15.4	FH-OPC		15.4
	Adoption probation		18.5	GH-CAS		15.5	GH-CAS		15.4	Independent living		--
	Overall		17.8	Overall		14.6	Overall		15.5	Overall		15.2
Nurturing Parenting Score Total possible range: 0-14	FH-CAS		--	FH-CAS		--	FH-CAS		12.4	FH-CAS		12.0
	Kinship		--	FH-OPC		--	FH-OPC		12.5	GH-OPC		11.1
	FH- OPC		--	Kinship		--	GH-OPC		12.3	Other		10.9
	Customary care		--	GH-OPC		--	Kinship		12.2	FH-OPC		12.3
	Adoption probation		--	GH-CAS		--	GH-CAS		11.4	Independent living		--
	Overall		--	Overall		--	Overall		12.2	Overall		11.7
Ineffective Parenting Score (for 3-17 year olds)	FH-CAS		7.2	FH-CAS		7.5	FH-CAS		2.6	FH-CAS		2.5
	Kinship		6.9	FH-OPC		7.8	FH-OPC		2.5	GH-OPC		3.5
	FH- OPC		6.9	Kinship		7.3	GH-OPC		3.4	Other		3.3
	Customary care		7.3	GH-OPC		5.6	Kinship		3.3	FH-OPC		2.3
	Adoption probation		7.8	GH-CAS		7.8	GH-CAS		3.6	Independent living		--
	Overall		7.1	Overall		7.5	Overall		2.8	Overall		2.8

Note: The scales described are reported by the caregivers of young people in the 0-17 age groups (unless otherwise noted).

The Positive Parenting scale for 0-9 year olds is a parent-reported, five-item, five-point scale. An examples of items included in the scale is: "How often do you and the child laugh together?" Response choices are: Many times each day, scored 4; One or two times a day, scored 3; A few times a week, scored 2; About once a week or less, scored 1; and Never, scored 0. The total possible range is 0-20. Higher scores on this scale indicate a greater number of positive interactions.

The Positive Parenting scale for 10-17 year olds is a parent-reported, eight-item, three-point scale. Examples of items included in the scale are: "I praise ...'s effort and help in the home" and "I include ... in celebrations in the home." Response choices are: Often or always, scored 2; Sometimes, scored 1; and Never or rarely, scored 0. The total possible range is 0-16. Higher scores on this scale indicate a greater number of positive interactions.

The Nurturing Parenting Practices scale is a youth-reported, seven-item, three-point scale. Examples of items included in the scale are: "My foster parent[s] (or other adult caregiver[s]) listen to my ideas and opinions" and "My foster parent[s] (or other adult caregiver[s]) seem proud of the things I do." Response choices are: Often or always, scored 2; Sometimes, scored 1; and Never or rarely, scored 0. Higher scores on this scale indicate greater degree of parental nurturance perceived by the young person.

The Ineffective Parenting Practices scale for 3-9 year olds is a parent-reported, seven-item, five-point scale. An example of items included in the scale is: "How often do you get angry when you punish the child?" Wording differs depending on the specific age group of the child. Response choices are: All the time, scored 4; More than half the time, scored 3; About half the time, scored 2; Less than half the time, scored 1; and Never, scored 0. Note that one of the questions is reverse coded. The total possible range is 0-28. Higher scores on this scale indicate a greater number of ineffective interactions.

The Ineffective Parenting Practices scale for 10-17 year olds is a youth-reported, six-item, three-point scale. Examples of items included in the scale are: "My foster parent[s] (or other adult caregiver[s]) soon forget a rule they have made" and "My foster parent[s] (or other adult caregiver[s]) get angry and yell at me." Response choices are: Often or always, scored 2; Sometimes, scored 1; and Never or rarely, scored 0. The total possible range is 0-18. Higher scores on this scale indicate a greater degree of parental rejection perceived by the young person.

Table 2.8: Health services received by placement setting and overall.

Age Group		CAS	ON		CAS	ON		CAS	ON		CAS	ON
		0-4	0-4		5-9	5-9		10-15	10-15		16-21	16-21
Young people who have had a medical examination in the last year	FH-CAS		98%	FH-CAS		96%	FH-CAS		97%	FH-CAS		96%
	Kinship		95%	FH-OPC		98%	FH-OPC		99%	GH-OPC		98%
	FH- OPC		94%	Kinship		93%	GH-OPC		99%	Other		86%
	Customary care		78%	GH-OPC		100%	Kinship		93%	FH-OPC		99%
	Adoption probation		100%	GH-CAS		100%	GH-CAS		98%	Independent living		75%
	Overall		97%	Overall		96%	Overall		97%	Overall		93%
Young people who have had a dental examination in the last year	FH-CAS		42%	FH-CAS		98%	FH-CAS		98%	FH-CAS		97%
	Kinship		59%	FH-OPC		99%	FH-OPC		99%	GH-OPC		97%
	FH- OPC		66%	Kinship		98%	GH-OPC		98%	Other		86%
	Customary care		67%	GH-OPC		100%	Kinship		97%	FH-OPC		98%
	Adoption probation		29%	GH-CAS		100%	GH-CAS		95%	Independent living		81%
	Overall		46%	Overall		98%	Overall		98%	Overall		94%
Young people taking psychotropic medications who are being monitored by a health care professional***	FH-CAS		8%	FH-CAS		78%	FH-CAS		85%	FH-CAS		71%
	Kinship		5%	FH-OPC		85%	FH-OPC		89%	GH-OPC		92%
	FH- OPC		9%	Kinship		61%	GH-OPC		96%	Other		45%
	Customary care		0%	GH-OPC		93%	Kinship		68%	FH-OPC		85%
	Adoption probation		0%	GH-CAS		77%	GH-CAS		91%	Independent living		--
	Overall		8%	Overall		79%	Overall		87%	Overall		79%
Young people whose immunizations are up to date	FH-CAS		96%	FH-CAS		97%	FH-CAS		98%	FH-CAS		96%
	Kinship		93%	FH-OPC		99%	FH-OPC		98%	GH-OPC		97%
	FH- OPC		95%	Kinship		98%	GH-OPC		99%	Other		96%
	Customary care		100%	GH-OPC		100%	Kinship		96%	FH-OPC		97%
	Adoption probation		100%	GH-CAS		100%	GH-CAS		98%	Independent living		94%
	Overall		96%	Overall		97%	Overall		98%	Overall		96%

***Note: This question is asked of young people in the 0-17 age groups

Figure 2.9: Percentage of young people who have an RESP or a Canada Learning Bond by placement setting.

Age Group		CAS	ON		CAS	ON		CAS	ON		CAS	ON
		0-4	0-4		5-9	5-9		10-15	10-15		16-21	16-21
Young people who have an RESP or a Canada Learning Bond	FH-CAS		18%	FH-CAS		19%	FH-CAS		12%	FH-CAS		11%
	Kinship		24%	FH-OPC		12%	FH-OPC		10%	GH-OPC		7%
	FH- OPC		7%	Kinship		20%	GH-OPC		6%	Other		9%
	Customary care		10%	GH-OPC		9%	Kinship		14%	FH-OPC		9%
	Adoption probation		63%	GH-CAS		17%	GH-CAS		6%	Independent living		4%
	Overall		18%	Overall		17%	Overall		11%	Overall		8%

Opportunities for First Nations Young People

Table 2.10: Opportunities for First Nations young people by placement setting and overall.

Age Group		CAS	ON			CAS	ON			CAS	ON			CAS	ON
		0-4	0-4			5-9	5-9			10-15	10-15			16-17	16-17
Young people who report or are reported as being of First Nations descent			24%				21%				19%				14%
Young people who have had a medical examination in the last year	FH-CAS		28%	FH-CAS		41%	FH-CAS		53%	FH-CAS		59%			
	Kinship		64%	FH-OPC		28%	FH-OPC		59%	GH-OPC		58%			
	FH- OPC		50%	Kinship		68%	GH-OPC		40%	Other		54%			
	Customary care		40%	GH-OPC		--	Kinship		65%	FH-OPC		63%			
	Adoption probation		50%	GH-CAS		100%	GH-CAS		58%	Independent living		--			
	Overall		36%	Overall		43%	Overall		53%	Overall		61%			
Young people who have had a dental examination in the last year	FH-CAS		40%	FH-CAS		54%	FH-CAS		63%	FH-CAS		60%			
	Kinship		68%	FH-OPC		44%	FH-OPC		66%	GH-OPC		73%			
	FH- OPC		60%	Kinship		79%	GH-OPC		53%	Other		67%			
	Customary care		60%	GH-OPC		--	Kinship		68%	FH-OPC		66%			
	Adoption probation		50%	GH-CAS		100%	GH-CAS		56%	Independent living		--			
	Overall		47%	Overall		55%	Overall		61%	Overall		68%			

Note: These questions are caregiver-reported for the 0-9 age group, and youth reported for the 10-17 age group. Young people in the 18-21 age group are included in the population who reported being of First Nations descent.

External Assets

The Search Institute has identified the following twenty external assets as building blocks that help young people grow up healthy, caring, and responsible. External assets fall under the following categories: Support, Empowerment, and Boundaries and Expectations, and Constructive Use of Time. Together with the Internal Assets (page 34), these make up a young person's Asset Profile (page 34).

Table 2.11: Average external assets by placement setting and overall.

Age Group		CAS	ON			CAS	ON			CAS	ON
		5-9	5-9			10-15	10-15			16-21	16-21
Average number of external assets	FH-CAS		14.6	FH-CAS		13.3	FH-CAS		13.4		
	FH-OPC		14.4	FH-OPC		13.1	GH-OPC		11.3		
	Kinship		14.1	GH-OPC		11.1	Other		8.8		
	GH-OPC		13.0	Kinship		13.5	FH-OPC		13.1		
	GH-CAS		14.6	GH-CAS		10.9	Independent living		10.8		
	Overall		14.4	Overall		12.9	Overall		11.9		

Note: Possible range of scores for 5-9 age group is 1-16. Possible range for 10-21 age group is 1-20.

Education: How are the Young People Doing?

Table 3.1: Academic achievement as rated by caregivers.

Age Group		CAS				ON			
		5-9	10-11	12-15	16-17	5-9	10-11	12-15	16-17
Reading (and other language arts for 12-17 year olds)	Very well or well					29%	30%	29%	31%
	Average					39%	47%	51%	48%
	Poorly or very poorly					32%	24%	20%	21%
Mathematics	Very well or well					20%	17%	23%	23%
	Average					49%	47%	52%	47%
	Poorly or very poorly					31%	36%	26%	30%
Written Work (for 5-11 year olds)	Very well or well					15%	16%	--	--
	Average					46%	49%	--	--
	Poorly or very poorly					39%	35%	--	--
Science (for 12-17 year olds)	Very well or well					--	--	23%	23%
	Average					--	--	57%	52%
	Poorly or very poorly					--	--	20%	26%
Overall academic achievement	Very well or well					21%	18%	24%	24%
	Average					52%	58%	59%	54%
	Poorly or very poorly					27%	24%	17%	21%
Academic achievement scale	Mean					3.6	3.6	4.2	4.0
	Median					4.0	4.0	4.0	4.0

Note: The above questions are asked pertaining to young people in the 5 to 17 age group. The Academic Achievement scale is a four-item, three-point scale, made up of the subjects above. Response choices are the same as above: Very well or well, scored 2; Average, scored 1; Poorly or very poor, scored 0. Range of possible scores is from 0 to 8. Higher scores on this scale indicate greater school performance, as rated by the caregiver.

Table 3.2: Young people’s rating of their own school success.

Age Group		CAS		ON	
		10-15	16-17	10-15	16-17
Young people’s rating of their own school success	Very well or well			38%	48%
	Average			53%	36%
	Poorly or very poor			8%	15%

Note: This question is asked only of young people in the 10-17 age groups.



Figure 3.1: Percentage of young people who have or have not ever repeated a grade.

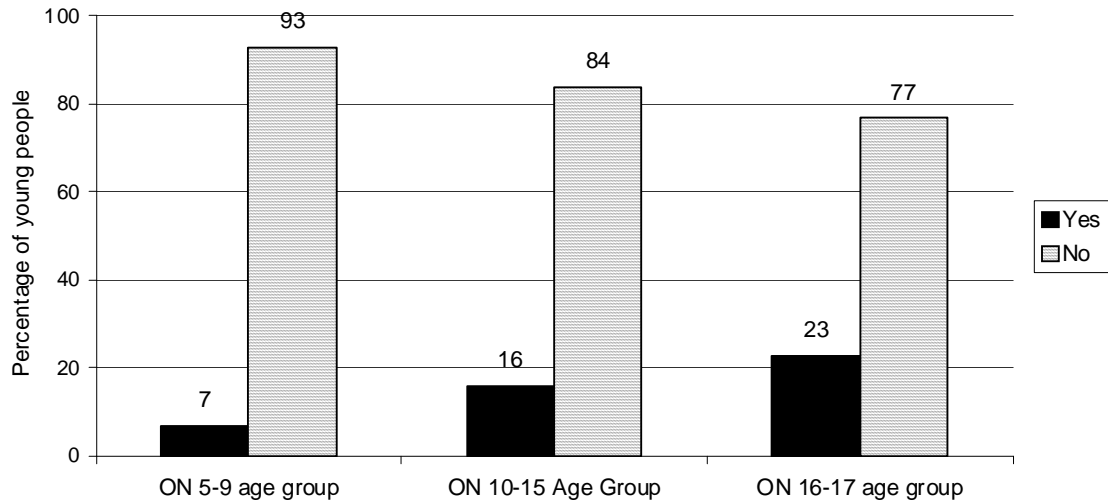


Table 3.3: Percentage of young people reporting the importance of school-related activities.

Age Group		CAS		ON	
		10-15	16-17	10-15	16-17
Get good grades?	Very important			66%	63%
	Somewhat important			29%	31%
	Not important			6%	6%
Make friends?	Very important			64%	52%
	Somewhat important			31%	36%
	Not important			6%	12%
Participate in extracurricular activities?	Very important			38%	24%
	Somewhat important			38%	38%
	Not important			24%	38%
Learn new things?	Very important			59%	51%
	Somewhat important			36%	41%
	Not important			5%	8%
Always show up to class on time?	Very important			65%	50%
	Somewhat important			26%	36%
	Not important			9%	15%
Express your opinion in class?	Very important			41%	42%
	Somewhat important			42%	40%
	Not important			16%	18%
Take part in student council or other similar groups?	Very important			13%	9%
	Somewhat important			26%	19%
	Not important			61%	72%
Hand in assignments on time?	Very important			64%	60%
	Somewhat important			28%	31%
	Not important			8%	9%

Note: The above questions are asked only of young people in the 10-17 age groups

Table 3.4: Level of education that caregivers and young people hope is achieved.

Age Group		CAS				ON			
		0-4	5-9	10-15	16-21	0-4	5-9	10-15	16-21
Primary/elementary school	Young person					--	--	--	--
	Caregiver					0.1%	0.5%	0.3%	--
Middle school/junior high	Young person					--	--	0.8%	2%
	Caregiver					--	--	--	7%
Secondary or high school	Young person					--	--	10%	17%
	Caregiver					3%	8%	11%	17%
Technical, trade, or vocational school	Young person					--	--	9%	11%
	Caregiver					4%	17%	24%	16%
College/CEGEP/ apprenticeship program	Young person					--	--	35%	48%
	Caregiver					18%	24%	31%	44%
University degree	Young person					--	--	26%	18%
	Caregiver					71%	48%	30%	15%
More than one university degree	Young person					--	--	6%	5%
	Caregiver					--	--	--	2%
Other	Young person					--	--	1%	0%
	Caregiver					3%	3%	4%	0%
I don't know	Young person					--	--	12%	--
	Caregiver					--	--	--	--

Table 3.5: Average grade achieved by school stream.

Age Group		CAS		ON	
		10-15	16-17	10-15	16-17
Academic (University-bound)	90%-100%			4%	2%
	80%-89%			26%	32%
	70%-79%			44%	33%
	60%-69%			18%	17%
	50%-59%			4%	7%
	Less than 50%			2%	3%
	Don't know			1%	4%
	Not applicable, ungraded			1%	2%
Applied (College-bound)	90%-100%			1%	3%
	80%-89%			7%	9%
	70%-79%			37%	31%
	60%-69%			35%	32%
	50%-59%			13%	14%
	Less than 50%			5%	4%
	Don't know			3%	5%
	Not applicable, ungraded			1%	3%
Other (e.g., special education)	90%-100%			0%	2%
	80%-89%			5%	9%
	70%-79%			23%	20%
	60%-69%			22%	18%
	50%-59%			11%	13%
	Less than 50%			4%	2%
	Don't know			5%	10%
	Not applicable, ungraded			29%	23%

Note: This table is comprised only of those young people who are currently attending high school in a regular grade 9, 10, 11, or 12.

Table 3.6: Young person’s feelings about different school subjects.

Age Group		CAS		ON	
		10-15	16-17	10-15	16-17
Mathematics	I like it a lot			29%	22%
	I like it a little			36%	31%
	I don’t like it very much			17%	18%
	I hate it			16%	24%
	I don’t take it			3%	6%
English	I like it a lot			34%	34%
	I like it a little			40%	37%
	I don’t like it very much			14%	13%
	I hate it			8%	12%
	I don’t take it			5%	6%
French	I like it a lot			17%	6%
	I like it a little			19%	10%
	I don’t like it very much			14%	8%
	I hate it			17%	20%
	I don’t take it			33%	56%
Science*	I like it a lot			38%	29%
	I like it a little			32%	30%
	I don’t like it very much			11%	12%
	I hate it			8%	12%
	I don’t take it			12%	17%
Gym/Phys. Ed.**	I like it a lot			65%	--
	I like it a little			16%	--
	I don’t like it very much			5%	--
	I hate it			6%	--
	I don’t take it			8%	--
Arts (including music and drama)**	I like it a lot			61%	--
	I like it a little			20%	--
	I don’t like it very much			5%	--
	I hate it			4%	--
	I don’t take it			10%	--

*This subject is only asked of 12-17 year olds.

**These specific subjects are only asked of 12-15 year olds.

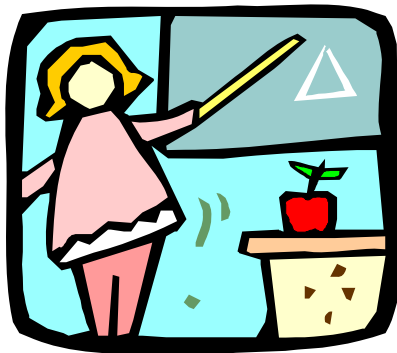


Table 3.7: Average frequency of literacy-promoting activities, as reported by the caregiver.

Age Group		CAS	ON	CAS	ON			CAS	ON
		1-2	1-2	3-4	3-4	5-9	5-9		
Average frequency of literacy-promoting activities	FH-CAS		24.5		43.4	FH-CAS			23.4
	Kinship		24.3		44.2	FH-OPC			23.0
	FH- OPC		24.8		43.4	Kinship			22.3
	Customary care		26.7		52.0	GH-OPC			17.5
	Adoption probation		25.7		46.0	GH-CAS			23.4
	Overall		24.5		43.6	Overall			23.1

Note: The Literacy-Promoting Scale for children aged 1-2 is an eight-item, five-point scale, reported by the caregiver. A sample question from the scale is: “How often do you (or your spouse or partner) get the chance to do the following with the child: Read stories or show pictures or wordless baby books?” and response choices are: Daily, scored 4; A few times a week, scored 3; Once a week, scored 2; A few times a month, scored 1; Rarely or never, scored 0. The possible range is 0 to 32, with a higher score indicating more frequent literacy promoting activities.

The Literacy-Promoting Scale for children aged 3-4 is a 15-item, five-point scale, reported by the caregiver. A sample question from the scale is: “How often do you (or your spouse or partner) get the chance to do the following with the child: Teach him/her to name printed letters and/or numbers?” and response choices are: Daily, scored 4; A few times a week, scored 3; Once a week, scored 2; A few times a month, scored 1; Rarely or never, scored 0. The possible range is 0 to 60, with a higher score indicating more frequent literacy promoting activities.

The Literacy-Promoting Scale for children aged 5-9 is a five-item, seven-point scale, reported by the caregiver. A sample question from the scale is: “How often does the child read (or – in the case of younger children – look at books or try to read on his/her own) for pleasure?” and response choices are: Daily, scored 6; A few times a week, scored 5; Once a week, scored 4; A few times a month, scored 3; Once a month, scored 2; Less than once a month, scored 1; Rarely or never, scored 0. The possible range is 0 to 35, with a higher score indicating more frequent literacy promoting activities.



How Physically Healthy are the Young People?

Figure 4.1: Health status of young people by placement setting.

Age Group		CAS		ON		CAS		ON		CAS		ON	
		0-4	0-4	5-9	5-9	10-15	10-15	16-21	16-21				
Excellent	FH-CAS		46%	FH-CAS		52%	FH-CAS		50%	FH-CAS		39%	
V. Good			36%			38%			36%			37%	
Good			14%			9%			13%			20%	
Fair			4%			1%			2%			3%	
Poor			0.4%			0.6%			0.1%			0.7%	
Excellent	Kinship		56%	FH-OPC		58%	FH-OPC		51%	GH-OPC		25%	
V. Good			33%			34%			34%			41%	
Good			10%			7%			13%			29%	
Fair			0%			1%			2%			4%	
Poor			0%			0.6%			0.3%			0.7%	
Excellent	FH-OPC		46%	Kinship		56%	GH-OPC		35%	Other		27%	
V. Good			36%			39%			37%			39%	
Good			17%			5%			23%			28%	
Fair			1%			0%			4%			5%	
Poor			0%			0%			0.9%			1%	
Excellent	Customary care		40%	GH-OPC		28%	Kinship		48%	FH-OPC		44%	
V. Good			50%			52%			35%			33%	
Good			0%			16%			15%			19%	
Fair			10%			4%			2%			3%	
Poor			0%			0%			0.3%			0.5%	
Excellent	Adoption probation		63%	GH-CAS		52%	GH-CAS		33%	Ind. living		28%	
V. Good			38%			33%			44%			31%	
Good			0%			14%			20%			34%	
Fair			0%			0%			2%			6%	
Poor			0%			0%			1%			2%	



Table 4.2: Young person's activity level compared to other youths by placement setting.

Age Group		CAS	ON			CAS	ON			CAS	ON
		0-4	0-4			5-9	5-9			10-15	10-15
Much more	FH-CAS		18%	FH-CAS		20%	FH-CAS		17%		
Moderately more			18%			22%			24%		
Equally			55%			48%			45%		
Moderately less			7%			6%			12%		
Much less			3%			3%			3%		
Much more	Kinship		10%	FH-OPC		23%	FH-OPC		15%		
Moderately more			27%			23%			22%		
Equally			59%			46%			52%		
Moderately less			4%			6%			10%		
Much less			1%			3%			2%		
Much more	FH-OPC		24%	Kinship		16%	GH-OPC		11%		
Moderately more			17%			26%			18%		
Equally			47%			52%			40%		
Moderately less			7%			6%			24%		
Much less			6%			0.7%			7%		
Much more	Customary care		22%	GH-OPC		24%	Kinship		15%		
Moderately more			11%			4%			23%		
Equally			67%			40%			55%		
Moderately less			0%			12%			5%		
Much less			0%			20%			2%		
Much more	Adoption probation		14%	GH-CAS		19%	GH-CAS		21%		
Moderately more			29%			24%			21%		
Equally			57%			52%			50%		
Moderately less			0%			5%			7%		
Much less			0%			0%			0%		

Table 4.3: Percentage of young people who have difficulties in one or more areas of physical ability.

Age Group		CAS				ON			
		1-4	5-9	10-15	16-17	1-4	5-9	10-15	16-17
Physical abilities	Speaking					33%	22%	8%	5%
	Walking					10%	5%	4%	3%
	Climbing					7%	4%	3%	2%
	Bending					4%	3%	3%	3%
	Seeing					8%	17%	20%	22%
	Hearing					5%	4%	3%	4%
	Using hands and fingers					8%	8%	4%	3%

Note: This question was asked only of young people in the 1-17 age groups.

Table 4.4: Average number of physical difficulties by placement setting.

Age Group	CAS		ON		CAS		ON		CAS		ON	
	0-4	0-4	5-9	5-9	10-15	10-15	16-17	16-17				
Average number of physical difficulties	FH-CAS	1.8	FH-CAS	1.6	FH-CAS	1.5	FH-CAS	0.4				
	Kinship	1.6	FH-OPC	1.9	FH-OPC	1.7	GH-OPC	0.5				
	FH- OPC	2.2	Kinship	1.1	GH-OPC	1.7	Other	0.3				
	Customary care	1.0	GH-OPC	3.1	Kinship	1.3	FH-OPC	0.4				
	Adoption probation	2.5	GH-CAS	1.1	GH-CAS	1.6	Independent living	0.0				
	Overall	1.8	Overall	1.6	Overall	1.5	Overall	0.4				

Note: This question was asked only of young people in the 1-17 age groups.

Table 4.5: Percentage of young people who have long term conditions by placement setting.

Age Group	CAS				ON			
	0-4	5-9	10-15	16-21	0-4	5-9	10-15	16-21
Long-term conditions	Food or digestive allergies				6%	3%	4%	4%
	Respiratory allergies				3%	3%	5%	5%
	Any other allergies				3%	4%	7%	8%
	Asthma				10%	8%	9%	10%
	Bronchitis				2%	0.8%	0.8%	2%
	Heart condition or disease				3%	2%	2%	1%
	Epilepsy				1%	2%	2%	2%
	Cerebral palsy				2%	2%	2%	1%
	Kidney condition or disease				0.9%	0.8%	0.6%	0.4%
	Developmental disability				14%	15%	16%	14%
	Learning disability				5%	24%	38%	30%
	Attention deficit disorder				3%	29%	40%	28%
	Emotional, psychological, or nervous difficulties				5%	21%	28%	25%
	Fetal alcohol spectrum disorder				4%	8%	8%	5%
	Diabetes				0.5%	0.5%	0.7%	0.9%
	Blood disorder				0.8%	1%	0.7%	0.6%
Other long term condition				11%	10%	10%	9%	

Table 4.6: Average number of long-term conditions by placement setting.

Age Group	CAS		ON		CAS		ON		CAS		ON	
	0-4	0-4	5-9	5-9	10-15	10-15	16-21	16-21				
Average number of long-term conditions	FH-CAS	1.8	FH-CAS	2.2	FH-CAS	2.2	FH-CAS	2.2				
	Kinship	1.5	FH-OPC	2.3	FH-OPC	2.5	GH-OPC	2.4				
	FH- OPC	1.9	Kinship	1.8	GH-OPC	2.7	Other	1.8				
	Customary care	1.8	GH-OPC	3.0	Kinship	1.8	FH-OPC	2.2				
	Adoption probation	1.5	GH-CAS	2.4	GH-CAS	2.2	Independent living	1.8				
	Overall	1.8	Overall	2.2	Overall	2.3	Overall	2.2				

Table 4.7: Health-related experiences by placement setting.

Age Group		CAS	ON		CAS	ON		CAS	ON		CAS	ON
		0-4	0-4		5-9	5-9		10-15	10-15		16-21	16-21
Young people who report being usually free of pain and discomfort	FH-CAS		--	FH-CAS		--	FH-CAS		80%	FH-CAS		83%
	Kinship		--	FH-OPC		--	FH-OPC		78%	GH-OPC		81%
	FH- OPC		--	Kinship		--	GH-OPC		78%	Other		78%
	Customary care		--	GH-OPC		--	Kinship		84%	FH-OPC		83%
	Adoption probation		--	GH-CAS		--	GH-CAS		70%	Independent living		77%
	Overall		--	Overall		--	Overall		79%	Overall		81%
Young people who have spent an overnight in a hospital in the past 12 months	FH-CAS		13%	FH-CAS		4%	FH-CAS		4%	FH-CAS		7%
	Kinship		9%	FH-OPC		4%	FH-OPC		6%	GH-OPC		17%
	FH- OPC		16%	Kinship		5%	GH-OPC		12%	Other		8%
	Customary care		20%	GH-OPC		16%	Kinship		5%	FH-OPC		10%
	Adoption probation		13%	GH-CAS		0%	GH-CAS		10%	Independent living		17%
	Overall		14%	Overall		5%	Overall		6%	Overall		11%
Young people who report eating breakfast most school days	FH-CAS		--	FH-CAS		--	FH-CAS		88%	FH-CAS		72%
	Kinship		--	FH-OPC		--	FH-OPC		86%	GH-OPC		67%
	FH- OPC		--	Kinship		--	GH-OPC		78%	Other		55%
	Customary care		--	GH-OPC		--	Kinship		87%	FH-OPC		73%
	Adoption probation		--	GH-CAS		--	GH-CAS		84%	Independent living		--
	Overall		--	Overall		--	Overall		86%	Overall		68%

Figure 4.8: Most serious injuries experienced by young people within last 12 months.

Age Group		CAS				ON			
		0-4	5-9	10-15	16-17	0-4	5-9	10-15	16-17
Most serious injuries	Broken or fractured bones					20%	20%	8%	15%
	Burn or scald					8%	4%	1%	3%
	Dislocation					2%	0.5%	0.4%	2%
	Sprain or strain					3%	11%	8%	18%
	Cut, scrape, or bruise					49%	39%	12%	33%
	Concussion					0.8%	3%	1%	5%
	Poisoning by substance or liquid					2%	2%	0.6%	3%
	Internal injury					2%	8%	0.5%	3%
	Dental injury					2%	7%	2%	3%
Other serious injury					13%	8%	3%	14%	

Note: These results reflect only those young people whose caregivers responded “yes” when asked if the young person was seriously injured in the past 12 months. This question was asked only of young people in the 0-17 age groups.

Table 4.9: Young people's experience with cigarettes, alcohol, and drugs.

Age Group		CAS		ON	
		12-15	16-17	12-15	16-17
Smoking cigarettes	Daily			7%	30%
	Occasionally			6%	12%
	Not at all			88%	59%
Alcohol	I have never had a drink of alcohol			76%	33%
	I only tried once or twice, but I don't drink alcohol anymore			13%	19%
	At least one drink a few times a year			7%	25%
	At least one drink about one or twice a month			3%	17%
	At least one drink weekly or more often			1%	6%
Marijuana and cannabis products	I have never done it			83%	45%
	I have done it, but not during the past 12 months			3%	13%
	I have done it at least once in the past 12 months			13%	42%
Have you ever used other drugs?*	Yes			8%	21%
	No			92%	79%
Hallucinogens (LSD/acid, magic mushrooms)*	I have never done it			87%	70%
	I have done it, but not during the past 12 months			6%	16%
	I have done it at least once in the past 12 months			7%	15%
Glues or solvents*	I have never done it			96%	93%
	I have done it, but not during the past 12 months			2%	4%
	I have done it at least once in the past 12 months			2%	3%
Drugs without a prescription (downers, uppers, Ritalin, tranquilizers, etc.)*	I have never done it			87%	72%
	I have done it, but not during the past 12 months			5%	10%
	I have done it at least once in the past 12 months			8%	19%
Other drugs (crack, cocaine, heroin, ecstasy, etc.)*	I have never done it			85%	64%
	I have done it, but not during the past 12 months			6%	16%
	I have done it at least once in the past 12 months			9%	20%

*These questions are asked only of young people in the 12-17 age group.

What is the Status of the Young People's Emotional Health and Overall Well-Being?

Table 5.1: General self-esteem scores by placement setting.

Age Group		CAS	ON			CAS	ON
		10-15	10-15			16-17	16-17
Average general self-esteem score	FH-CAS		7.0	FH-CAS		6.9	
	FH-OPC		6.9	GH-OPC		6.6	
	GH-OPC		6.4	Other		6.8	
	Kinship		7.1	FH-OPC		6.8	
	GH-CAS		6.5	Independent living		--	
	Overall		6.9	Overall		6.8	

Note: The General Self-Esteem scale is a four-item, three-point scale, reported by the young person. A sample question from the scale is: "A lot of things about me are good" and response choices are True or mostly true scored 2, Sometimes false/sometimes true scored 1, and False or mostly false scored 0. The possible range of scores is from 0 to 8, with a higher score indicating a greater degree of positive general self-image. These questions are asked only of young people in the 10-17 age group.

Figure 5.2: Physical self-esteem scores by placement setting.

Age Group		CAS	ON			CAS	ON
		10-15	10-15			16-17	16-17
Average physical self-esteem score	FH-CAS		9.6	FH-CAS		9.6	
	FH-OPC		9.8	GH-OPC		9.3	
	GH-OPC		9.2	Other		9.7	
	Kinship		9.5	FH-OPC		9.4	
	GH-CAS		9.1	Independent living		--	
	Overall		9.6	Overall		9.5	

Note: The Physical Self-Esteem scale is a three-item, five-point scale, reported by the young person. A sample question from the scale is: "I am good looking" and response choices are: True, scored 4; Mostly true, scored 3; Sometimes false or sometimes true, scored 2; Mostly false, scored 1; and False, scored 0. The possible range of scores is from 0 to 12, with a higher score indicating a greater degree of positive physical self-image. These questions are asked only of young people in the 10-17 age group.

Table 5.3: Perceived quality of friendships by placement setting

Age Group		CAS	ON			CAS	ON
		10-15	10-15			16-17	16-17
Average quality of friendships score	FH-CAS		3.3	FH-CAS		3.4	
	FH-OPC		3.2	GH-OPC		3.1	
	GH-OPC		2.9	Other		3.1	
	Kinship		3.5	FH-OPC		3.2	
	GH-CAS		3.1	Independent living		--	
	Overall		3.2	Overall		3.2	

Note: The Friendships scale is a two-item, three-point scale, reported by the young person. The items are: “I have many friends” and “I get along easily with others my age.” Response choices are: False or mostly false, scored 0; Sometimes false or sometimes true, scored 1; True or mostly true, scored 2. The possible range of scores is from 0 to 4, with a higher score indicating a greater number of positive relationships with friends. This scale applies only to young people in the 10-17 age group.

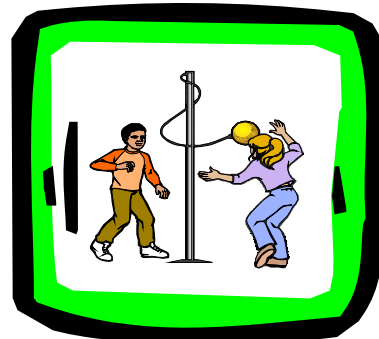


Figure 5.4: Total happiness score by placement setting.

Age Group		CAS	ON			CAS	ON
		10-15	10-15			16-17	16-17
Average happiness score	FH-CAS		4.5	FH-CAS		4.4	
	FH-OPC		4.5	GH-OPC		3.9	
	GH-OPC		3.7	Other		4.1	
	Kinship		4.5	FH-OPC		4.3	
	GH-CAS		4.0	Independent living		--	
	Overall		4.4	Overall		4.2	

Note: The General Happiness scale is a two-item, four-point scale, reported by the young person. The items are: “In general, I am happy with how things are for me in my life now” and “The next five years look good to me.” Response choices are: Strongly disagree, scored 0; Disagree, scored 1; Agree, scored 2; Strongly agree, scored 3. The possible range of scores is from 0 to 6, with a higher score indicating a greater level of happiness and optimism. This scale applies only to young people in the 10-17 age group.

Table 5.5: Percentage of young people who responded “Most of the time” or “Often” to Hope Scale items by placement setting and total Hope Scale score by placement setting and overall.

Age Group		CAS	ON			CAS	ON
		10-15	10-15			16-17	16-17
I think I'm doing pretty well	FH-CAS		88%	FH-CAS		84%	
	FH-OPC		87%	GH-OPC		76%	
	GH-OPC		74%	Other		79%	
	Kinship		89%	FH-OPC		84%	
	GH-CAS		74%	Independent living		--	
I can think of many ways to get the things in life that are most important to me	FH-CAS		81%	FH-CAS		83%	
	FH-OPC		80%	GH-OPC		75%	
	GH-OPC		65%	Other		82%	
	Kinship		83%	FH-OPC		79%	
	GH-CAS		72%	Independent living		--	
I am doing just as well as other kids my age	FH-CAS		77%	FH-CAS		78%	
	FH-OPC		74%	GH-OPC		61%	
	GH-OPC		59%	Other		70%	
	Kinship		82%	FH-OPC		70%	
	GH-CAS		62%	Independent living		--	
When I have a problem, I can come up with lots of ways to solve it.	FH-CAS		65%	FH-CAS		70%	
	FH-OPC		62%	GH-OPC		58%	
	GH-OPC		45%	Other		74%	
	Kinship		69%	FH-OPC		60%	
	GH-CAS		61%	Independent living		--	
I think the things I have done in the past will help me in the future	FH-CAS		66%	FH-CAS		74%	
	FH-OPC		63%	GH-OPC		52%	
	GH-OPC		49%	Other		73%	
	Kinship		70%	FH-OPC		68%	
	GH-CAS		60%	Independent living		--	
Even when others want to quit, I know that I can find ways to solve problems	FH-CAS		62%	FH-CAS		64%	
	FH-OPC		55%	GH-OPC		52%	
	GH-OPC		47%	Other		63%	
	Kinship		67%	FH-OPC		58%	
	GH-CAS		57%	Independent living		--	
Average Hope score	FH-CAS		13.1	FH-CAS		13.4	
	FH-OPC		12.7	GH-OPC		11.7	
	GH-OPC		10.9	Other		12.9	
	Kinship		13.5	FH-OPC		12.6	
	GH-CAS		12.1	Independent living		--	
	Overall		12.7	Overall		12.7	

Note: The Hope Scale is a six-item, four-point scale, reported by the young person. Items are as indicated in Table 5.5. Response choices are: Never, scored 0; Sometimes, scored 1; Often, scored 2; Always, scored 3. The possible range of scores is from 0 to 18, with a higher score indicating a greater level of hopefulness. These questions apply only to young people in the 10-17 age group.

Table 5.6: Percentage of young people who responded “Most of the time” or “Often” to Active Coping Scale items by placement setting and total Active Coping Scale score by placement setting and overall.

Age Group		CAS	ON			CAS	ON
		10-15	10-15			16-17	16-17
I do things to make my problem better	FH-CAS		66%	FH-CAS		66%	
	FH-OPC		60%	GH-OPC		51%	
	GH-OPC		46%	Other		64%	
	Kinship		71%	FH-OPC		60%	
	GH-CAS		48%	Independent living		--	
I think about different ways of solving my problem	FH-CAS		61%	FH-CAS		61%	
	FH-OPC		53%	GH-OPC		47%	
	GH-OPC		41%	Other		61%	
	Kinship		63%	FH-OPC		51%	
	GH-CAS		43%	Independent living		--	
I take action to improve the situation	FH-CAS		58%	FH-CAS		62%	
	FH-OPC		52%	GH-OPC		50%	
	GH-OPC		39%	Other		63%	
	Kinship		57%	FH-OPC		52%	
	GH-CAS		49%	Independent living		--	
I try to learn more about what is causing my problem	FH-CAS		45%	FH-CAS		45%	
	FH-OPC		43%	GH-OPC		37%	
	GH-OPC		33%	Other		48%	
	Kinship		43%	FH-OPC		34%	
	GH-CAS		32%	Independent living		--	
Total Active Coping score	FH-CAS		7.3	FH-CAS		7.5	
	FH-OPC		6.9	GH-OPC		6.4	
	GH-OPC		5.9	Other		7.4	
	Kinship		7.5	FH-OPC		6.7	
	GH-CAS		6.6	Independent living		--	
	Overall		7.0	Overall		7.0	

Note: The Active Coping scale is a four-item, four-point scale, reported by the young person. Items are as indicated in Table 5.6. Response choices are: Never, scored 0; Sometimes, scored 1; Often, scored 2; Always, scored 3. The possible range of scores is from 0 to 12, with a higher score indicating a greater level of hopefulness. These questions are asked only of young people in the 10-17 age group.

Table 5.7: Percentage of caregivers (or young people) who responded “Always” or “Often” with regard to indicators of the young person’s social presentation.

Age Group		CAS		ON	
		10-15	16-21	10-15	16-21
Social presentation	Keeps himself/herself clean			81%	87%
	Takes adequate care of his/her skin			77%	83%
	Personal appearance gives people the impressions that he/she takes care of himself/herself*			89%	86%
	Wears suitable clothes			92%	90%
	People can understand what he/she is saying			89%	91%
	Is polite with friends/adults			85%	84%
	Do you know how to adjust your behaviour and conversation appropriately to different situations? **			--	87%

*Asked only of 10 to 17 year olds

** Asked only of 18-21 year olds

Table 5.8: Percentage of caregivers who responded “Always” or “Often” with regard to indicators of the child’s social presentation.

Age Group		CAS			ON		
		0-2	3-4	5-9	0-2	3-4	5-9
Social presentation	Promptly changed when wet or dirty				100%	--	--
	Bathed daily				66%	--	--
	Skin and hair are cared for appropriately				99%	--	--
	Dressed appropriately				99%	100%	98%
	Appears well cared for				--	100%	99%
	Makes himself/herself understood by people outside the immediate family				--	62%	80%
	Says please, thank you, excuse me, etc.				--	73%	82%

*Asked only of 0-9 year olds



Table 5.9: Attachment to at least one caregiver by placement setting.

Age Group		CAS	ON			CAS	ON			CAS	ON
		0-4	0-4			5-9	5-9			10-15	10-15
Definitely attached	FH-CAS		90%	FH-CAS		79%	FH-CAS		75%		
Some attachment			9%			20%			23%		
Little or no attachment			0.6%			2%			3%		
Definitely attached	Kinship		91%	FH-OPC		80%	FH-OPC		70%		
Some attachment			9%			20%			25%		
Little or no attachment			0%			0.6%			4%		
Definitely attached	FH-OPC		91%	Kinship		93%	GH-OPC		32%		
Some attachment			8%			7%			48%		
Little or no attachment			1%			0%			20%		
Definitely attached	Customary care		100%	GH-OPC		35%	Kinship		87%		
Some attachment			0%			52%			12%		
Little or no attachment			0%			13%			1%		
Definitely attached	Adoption probation		88%	GH-CAS		71%	GH-CAS		33%		
Some attachment			13%			29%			45%		
Little or no attachment			0%			0%			21%		

Table 5.10: Level of perceived mastery reported by young adults.

Age Group		CAS	ON
		18-21	18-21
Average perceived mastery score	FH-CAS		--
	GH-OPC		--
	Other		14.9
	FH-OPC		--
	Independent living		15.3
	Overall		15.1

Note: The Perceived Mastery scale is a seven-item, four-point scale, reported by the young adult. An example item is: "What happens to me in the future depends on me." Response choices are: Strongly disagree, scored 0; Disagree, scored 1; Agree, scored 2; Strongly agree, scored 3. Five of the seven items are reverse coded. The possible range of scores is from 0 to 21, with a higher score indicating a greater degree of mastery perceived by the young person. These questions are asked only of young people in the 18-21 age group.

Table 5.11: Strengths and Difficulties Questionnaire by placement setting and overall.

Age Group		CAS	ON			CAS	ON			CAS	ON
		5-9	5-9			10-15	10-15			16-17	16-17
Pro-social Score	FH-CAS		7.5	FH-CAS		7.9	FH-CAS		7.8		
	Kinship		7.1	FH-OPC		7.6	GH-OPC		6.6		
	FH-OPC		8.5	Kinship		6.4	Other		7.2		
	GH-OPC		4.7	GH-OPC		8.3	FH-OPC		7.3		
	GH-CAS		6.9	GH-CAS		6.7	Independent living		--		
	Overall		7.5	Overall		7.6	Overall		7.3		
Emotional Symptoms Score	FH-CAS		2.2	FH-CAS		2.5	FH-CAS		2.7		
	Kinship		2.3	FH-OPC		2.6	GH-OPC		3.5		
	FH-OPC		1.5	Kinship		3.4	Other		3.1		
	GH-OPC		2.3	GH-OPC		2.1	FH-OPC		2.9		
	GH-CAS		2.2	GH-CAS		2.8	Independent living		--		
	Overall		2.1	Overall		2.7	Overall		2.9		
Hyperactivity Score	FH-CAS		5.7	FH-CAS		4.8	FH-CAS		4.2		
	Kinship		5.9	FH-OPC		5.0	GH-OPC		5.2		
	FH-OPC		4.3	Kinship		6.1	Other		4.7		
	GH-OPC		6.6	GH-OPC		4.3	FH-OPC		4.5		
	GH-CAS		5.6	GH-CAS		5.2	Independent living		--		
	Overall		5.6	Overall		5.0	Overall		4.5		
Conduct Problems Score	FH-CAS		2.9	FH-CAS		2.4	FH-CAS		2.2		
	Kinship		3.2	FH-OPC		2.6	GH-OPC		3.7		
	FH-OPC		1.7	Kinship		3.9	Other		2.8		
	GH-OPC		3.4	GH-OPC		1.8	FH-OPC		2.4		
	GH-CAS		3.4	GH-CAS		3.3	Independent living		--		
	Overall		2.7	Overall		2.7	Overall		2.7		
Peer Relation Problems Score	FH-CAS		2.4	FH-CAS		2.2	FH-CAS		2.3		
	Kinship		2.7	FH-OPC		2.8	GH-OPC		3.7		
	FH-OPC		1.5	Kinship		3.7	Other		2.6		
	GH-OPC		3.7	GH-OPC		1.7	FH-OPC		2.8		
	GH-CAS		3.1	GH-CAS		3.1	Independent living		--		
	Overall		2.4	Overall		2.5	Overall		2.8		
Total Difficulties Score	FH-CAS		13.2	FH-CAS		12.0	FH-CAS		11.3		
	Kinship		14.2	FH-OPC		12.9	GH-OPC		16.1		
	FH-OPC		9.0	Kinship		16.9	Other		13.1		
	GH-OPC		15.8	GH-OPC		10.1	FH-OPC		12.7		
	GH-CAS		14.3	GH-CAS		13.9	Independent living		--		
	Overall		12.9	Overall		12.8	Overall		12.9		

Note: The Pro-social scale is a five-item, three-point scale, reported by the caregiver. A sample item is: "Shares readily with other youth, for example books, games, food." Response choices are: Not true, scored 0; Somewhat true, scored 1; True, scored 2. The possible range of scores is from 0 to 10, with a higher score indicating a greater amount of pro-social behaviours.

The Emotional Symptoms scale is a five-item, three-point scale reported by the caregiver. A sample item is: "Often unhappy, depressed, or tearful." Response choices are: Not true, scored 0; Somewhat true, scored 1; True, scored 2. The possible range of scores is from 0 to 10, with a higher score indicating a greater amount of emotional symptoms.

The Hyperactivity scale is a five-item, three-point scale reported by the caregiver. A sample item is: "Easily distracted, concentration wanders." Response choices are: Not true, scored 0; Somewhat true, scored 1; True, scored 2. Two items are reverse coded. The possible range of scores is from 0 to 10, with a higher score indicating a greater degree of hyperactivity.

The Conduct Problems scale is a five-item, three-point scale reported by the caregiver. A sample item is: "Often loses temper." Response choices are: Not true, scored 0; Somewhat true, scored 1; True, scored 2. The possible range of scores is from 0 to 10, with a higher score indicating a greater number of behaviours associated with conduct problems.

The Peer Relation Problems scale is a five-item, three-point scale reported by the caregiver. A sample item is: "Would rather be alone than with other youth." Response choices are: Not true, scored 0; Somewhat true, scored 1; True, scored 2. Two items are reverse coded. The possible range of scores is from 0 to 10, with a higher score indicating a greater level of problems with peers.

The Total Difficulties score is a twenty-item, three-point scale, constructed by adding together the items from the Emotional Symptoms scale, the Hyperactivity scale, the Conduct Problems scale, and the Peer Relation Problems scale. The possible range of scores is from 0 to 40, with a higher score indicating a greater level of overall difficulties.

Internal Assets

The Search Institute has identified the following twenty internal assets as building blocks that help young people grow up healthy, caring, and responsible. Internal assets fall under the following categories: Commitment to Learning, Positive Values, Social Competencies, and Positive Identity. Together with the External Assets (page 16), these make up a young person’s Asset Profile (below).

Table 5.12: Average internal assets by placement setting and overall.

Age Group	CAS		ON		CAS		ON		CAS		ON	
	5-9	5-9	10-15	10-15	16-21	16-21	16-21	16-21				
Average number of internal assets (Possible range of scores: 1-20)	FH-CAS	13.8	FH-CAS	13.7	FH-CAS	13.6						
	FH-OPC	12.9	FH-OPC	12.9	GH-OPC	10.1						
	Kinship	15.2	GH-OPC	9.8	Other	11.1						
	GH-OPC	8.9	Kinship	15.0	FH-OPC	13.3						
	GH-CAS	15.1	GH-CAS	10.9	Independent living	13.8						
	Overall	13.8	Overall	12.9	Overall	12.3						

Asset Profile

Table 5.13: Asset Profile by placement setting and overall.

Age Group	CAS		ON		CAS		ON		CAS		ON	
	5-9	5-9	10-15	10-15	16-21	16-21	16-21	16-21				
Asset profile	FH-CAS	28.4	FH-CAS	27.1	FH-CAS	27.0						
	FH-OPC	27.5	FH-OPC	26.0	GH-OPC	21.5						
	Kinship	29.4	GH-OPC	20.9	Other	19.9						
	GH-OPC	22.6	Kinship	28.5	FH-OPC	26.6						
	GH-CAS	29.8	GH-CAS	22.0	Independent living	24.6						
	Overall	28.3	Overall	25.9	Overall	24.3						

Note: Possible range of scores for 5-9 age group is 1-36. Possible range for 10-21 age group is 1-40.

