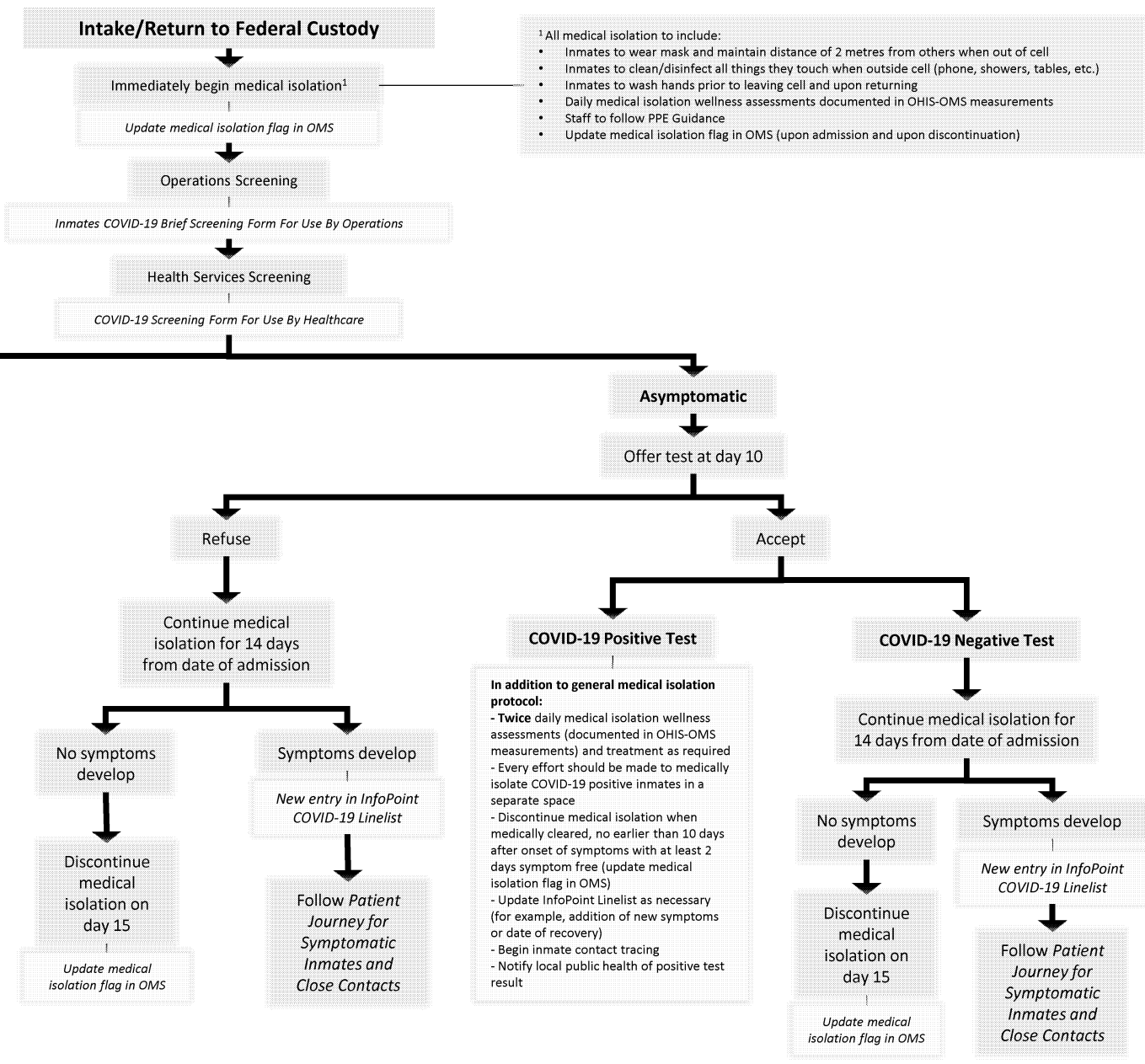


Patient Journey: COVID-19
New Warrants of Committal and Returns to Federal Custody

June 23, 2020



- ¹ All medical isolation to include:
- Inmates to wear mask and maintain distance of 2 metres from others when out of cell
 - Inmates to clean/disinfect all things they touch when outside cell (phone, showers, tables, etc.)
 - Inmates to wash hands prior to leaving cell and upon returning
 - Daily medical isolation wellness assessments documented in OHIS-OMS measurements
 - Staff to follow PPE Guidance
 - Update medical isolation flag in OMS (upon admission and upon discontinuation)

Notes
 Staff should engage with inmates to explain the rationale for medical isolation and provide information about the associated protocols. Inmates should be educated on the importance of other infection prevention and control measures, such as hand hygiene, wearing a mask, and maintaining a distance of 2m from others. If concerns arise about inmates following any of the recommended measures noted in this algorithm, institutional management should discuss to determine appropriate response.