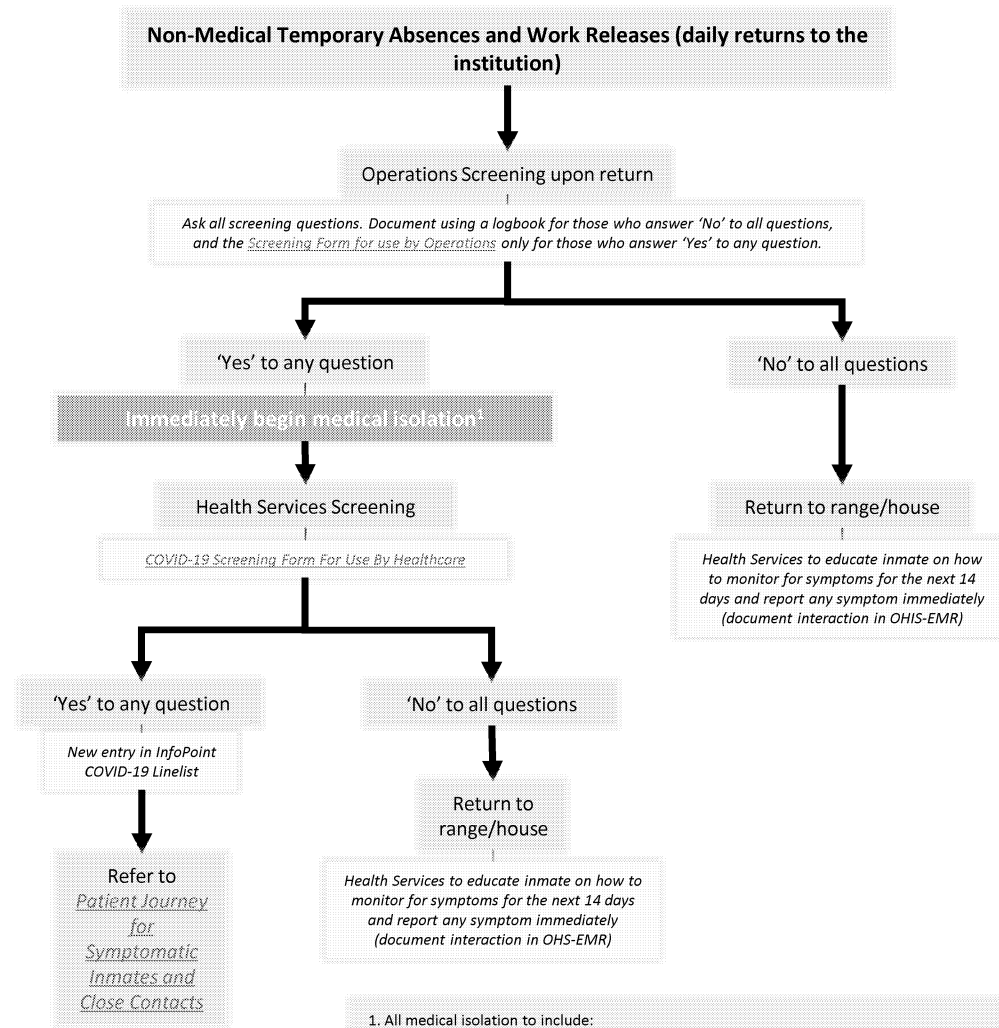
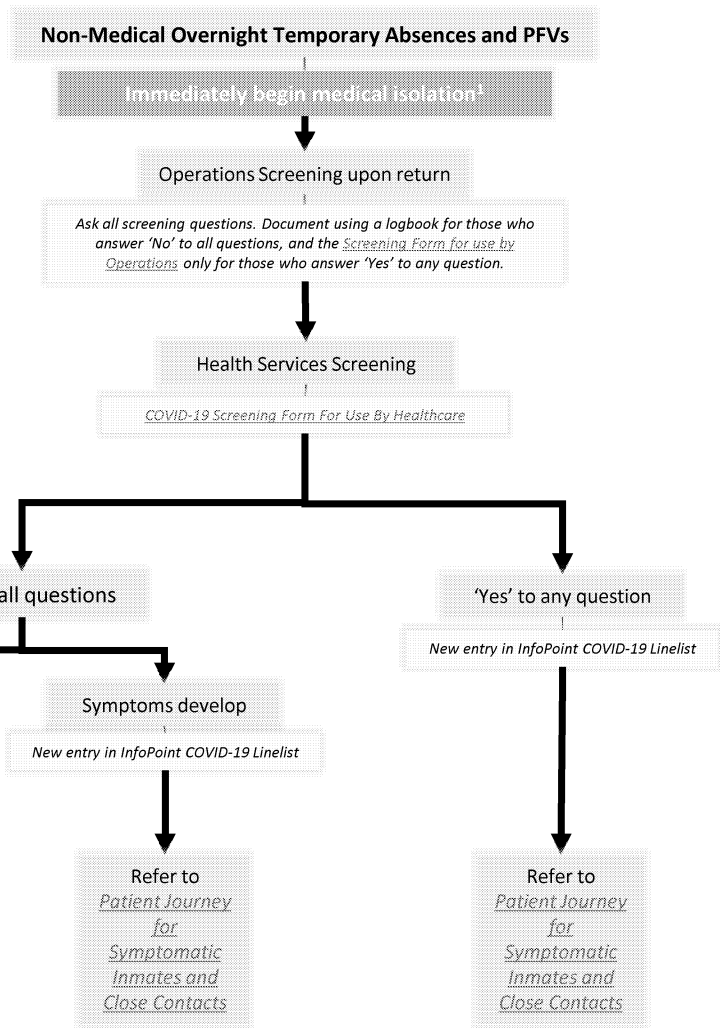


**Patient Journey: COVID-19**  
 Temporary Absences  
 August 21, 2020



1. All medical isolation to include:
- Update medical isolation flag in OMS
  - Daily medical isolation wellness assessments documented in OHS-EMR measurements
  - Inmates to clean/disinfect all things they touch when outside cell (phone, tables, etc.), wash hands prior to leaving cell and upon returning, wear mask when out of cell, maintain 2m distance from others when out of cell
  - Where possible, in a separate physical area or designated medical isolation cell
  - Update InfoPoint Linelist as necessary (for example, addition of new symptoms or date of recovery)
  - Staff to follow PPE Guidance
  - Complete Form 1620 (Medical Isolation Form)

**Notes**  
 Staff should engage with inmates to explain the rationale for medical isolation and provide information about the associated protocols. Inmates should be educated on the importance of other infection prevention and control measures, such as hand hygiene, wearing a mask, and maintaining a distance of 2m from others. If concerns arise about inmates following any of the recommended measures noted in this algorithm, institutional management should discuss to determine appropriate response.